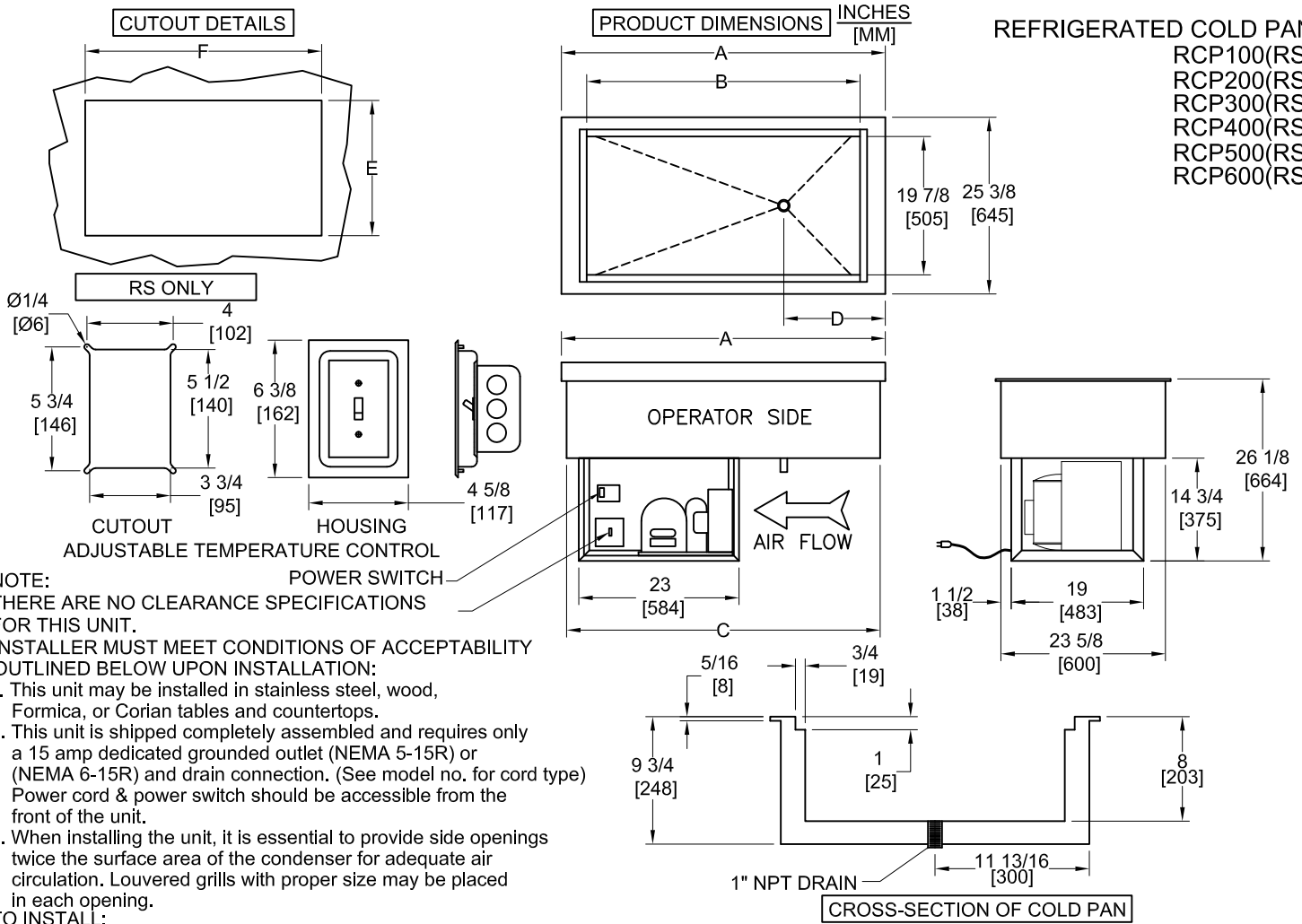


INSTALLATION INSTRUCTIONS

REFRIGERATED COLD PAN
 RCP100(RS)
 RCP200(RS)
 RCP300(RS)
 RCP400(RS)
 RCP500(RS)
 RCP600(RS)



NOTE:
 THERE ARE NO CLEARANCE SPECIFICATIONS FOR THIS UNIT.
 INSTALLER MUST MEET CONDITIONS OF ACCEPTABILITY OUTLINED BELOW UPON INSTALLATION:

1. This unit may be installed in stainless steel, wood, Formica, or Corian tables and countertops.
2. This unit is shipped completely assembled and requires only a 15 amp dedicated grounded outlet (NEMA 5-15R) or (NEMA 6-15R) and drain connection. (See model no. for cord type) Power cord & power switch should be accessible from the front of the unit.
3. When installing the unit, it is essential to provide side openings twice the surface area of the condenser for adequate air circulation. Louvered grills with proper size may be placed in each opening.

TO INSTALL:

1. Lay out "cutout" dimensions on countertop or table.
2. Cut out hole and add stiffeners to support weight of unit if necessary. Countertop must be flat and level before installing cold pan.
3. Apply a generous bead of silicone sealant to underside of mounting flange before setting unit into cutout. Remove any excess sealant from top flange and countertop.
4. Connect 1 inch drain to drain pan or floor drain. Consult local codes for approved drain connections.

Model Number	OVERALL DIMENSIONS						ELECTRICAL AND REFRIGERATION SPECIFICATIONS								
	DIM. A	DIM. B	DIM. C	DIM. D	DIM. E	DIM. F	VOLTS	HP	AMPS	REFRIGERANT TYPE	REFRIGERANT QTY	DESIGN PRESSURE HIGH	DESIGN PRESSURE LOW	POWER SUPPLY CORD	
RCP-100 (RS)	17 3/8 [441]	11 7/8 [302]	23 5/8 [600]	5 [127]	23 7/8 [606]	15 7/8 [403]	115	1/5	4	R-513A	9 oz	442	162	NEMA 5-15P	
RCP-200 (RS)	31 [787]	25 1/2 [648]	29 1/4 [743]	5 [127]	23 7/8 [606]	29 1/2 [749]	115	1/4	5	R-513A	10 oz	442	162	NEMA 5-15P	
RCP-300 (RS)	44 3/4 [1137]	39 1/4 [997]	43 [1092]	5 [127]	23 7/8 [606]	43 1/4 [1099]	115	1/4	5	R-513A	11 oz	442	162	NEMA 5-15P	
RCP-400 (RS)	58 1/2 [1486]	53 [1346]	56 3/4 [1441]	29 1/4 [743]	23 7/8 [606]	57 [1448]	115	1/4	5	R-513A	12 oz	442	162	NEMA 5-15P	
RCP-500 (RS)	72 1/4 [1835]	66 3/4 [1695]	70 1/2 [1791]	36 1/8 [918]	23 7/8 [606]	70 3/4 [1797]	115	1/3	6	R-513A	13 oz	442	162	NEMA 5-15P	
RCP-600 (RS)	86 [2184]	80 1/2 [2045]	84 1/4 [2140]	43 [1092]	23 7/8 [606]	84 1/2 [2146]	115	1/3	6	R-513A	14 oz	442	162	NEMA 5-15P	

