

INSTALLATION INSTRUCTIONS BUILT-IN MODULAR WARMERS

MOD-200, MOD-200D, MOD-200T
MOD-200TD, MOD-200DM, MOD-200TDM
MOD-200E, MOD-200ED, MOD-200EDM

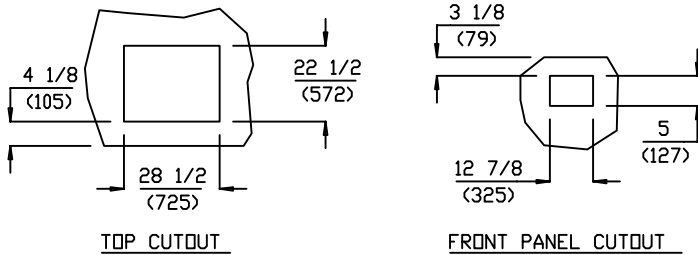
MODELS WITH OPTIONAL CORD:
MOD-200CT, MOD-200CTD, MOD-200CTDM
MOD-200CE, MOD-200CED, MOD-200CEDM

ALL MODELS WITH A 'D' OR 'DM'
SUFFIX HAVE THE SAME ELECTRICAL
SPECIFICATIONS AS THE STANDARD
MOD-200, MOD-200T, OR MOD-200E MODELS.

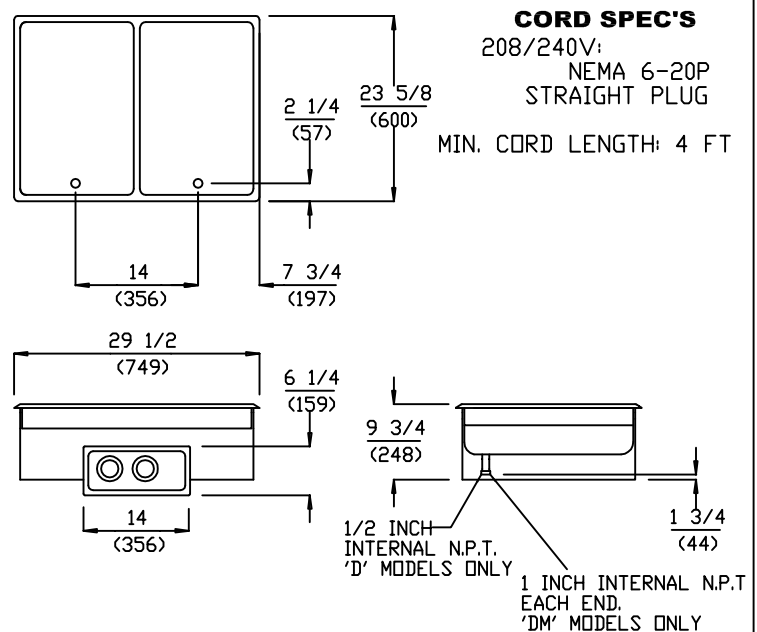
ELECTRICAL

MODELS	VOLTS	WATTS	AMPS	PHASE	FIELD WIRING GAUGE	TEMP. RATING
MOD-200	208	1800	8.7	SINGLE	12	75°C
MOD-200	240	2400	10.0	SINGLE	12	75°C
MOD-200T/E	208	2480	11.9	SINGLE	14	90°C
MOD-200T/E	240	3300	13.8	SINGLE	14	90°C

CUTOUT DETAILS



PRODUCT DIMENSIONS



CLEARANCES

MINIMUM CLEARANCE REQUIRED FROM UNIT TO THE NEAREST SURFACE			
BACK	SIDE	BOTTOM	FRONT
1 (25)	1 (25)	6 3/4 (171)	4 1/8 (105)

INSTALLATION INSTRUCTIONS

NOTE:
 THE DRAIN MANIFOLD WITH 1" INTERNAL NPT VALVE IS SUPPLIED FOR DM AND TDM MODELS ONLY.

INSTALLER MUST MEET CONDITIONS OF ACCEPTABILITY OUTLINED BELOW UPON INSTALLATION:

- Required Installation Clearances:
 Wooden and Metal Installation: DO NOT install closer than 4 1/8 inches to front wall, 1 inch to back and side walls, and 6 3/4 inches to a surface below the unit. If the control box is located below the unit, the front clearance may be 1 inch.
- Unit shall be accessible for servicing from the bottom.
- If storage is to be used underneath the unit, it is recommended that a baffle be placed 8 1/2 inches below the unit to avoid contact with elevated temperatures.

TO FABRICATE:

- Layout 'cutout' dimensions on countertop and front apron.
- Layout and fabricate control panel holes in counter apron using control box as a template.
- Cut out holes. (note: "stiffening" around perimeter of "countertop cutout" is not normally required).
- Unit shall be accessible for servicing from the bottom.

TO INSTALL:

- IMPORTANT - DO NOT** disconnect "lead wires" from the Master Control Panel when making installation.
- Tilt and pass Control Panel and electrical box through countertop cutout, then through apron cutout. Lower modular section into countertop cutout and position.
RECOMMENDATION: Before final seating of modular section to countertop, apply a bead of silicone adhesive/sealant to underside of gray gasket material supplied on mounting flange.
 - From underneath, insert screwdriver into "slots" in Wellslok frame and twist "ears" outward (clockwise) as required to secure flange tightly to countertop.
 - Mount Control Box to apron cutout as shown in drawing.

- Mount Control Panel onto electrical box using screws supplied.

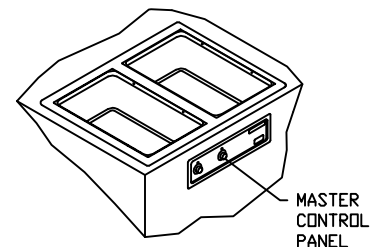
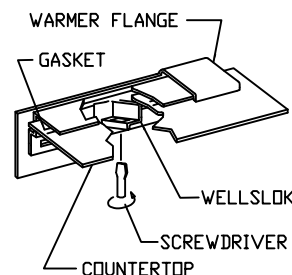
TO PLUMB:

- A drain manifold complete with valve is supplied on all Model "DM", "TDM" or "EDM" units. Location of valve handle is at the discretion of the fabricator. Install and tighten pipe plug in one end of the manifold.
- Warmers with 'D' suffix are supplied with individual 1/2" female N.P.T. drains.
- Connect 1" drain connection to suitable drain line.

TO WIRE:

- Final connection is accomplished by bringing proper power supply leads (see 'wiring requirements' label) through conduit knockout to terminal block supplied within the Master Control Panel. Check nameplates for voltage and phase.
- Do not connect to a circuit operating at more than 150 volts to ground.

NOTE: INSTALLATION MUST MEET LOCAL PLUMBING AND ELECTRICAL CODES.



IMPORTANT:
 MOUNT APPLIANCE SO THAT BOTH THE CONTROL PANEL AND DRAIN MANIFOLD ARE LOCATED TO THE FRONT OF THE FIXTURE.