

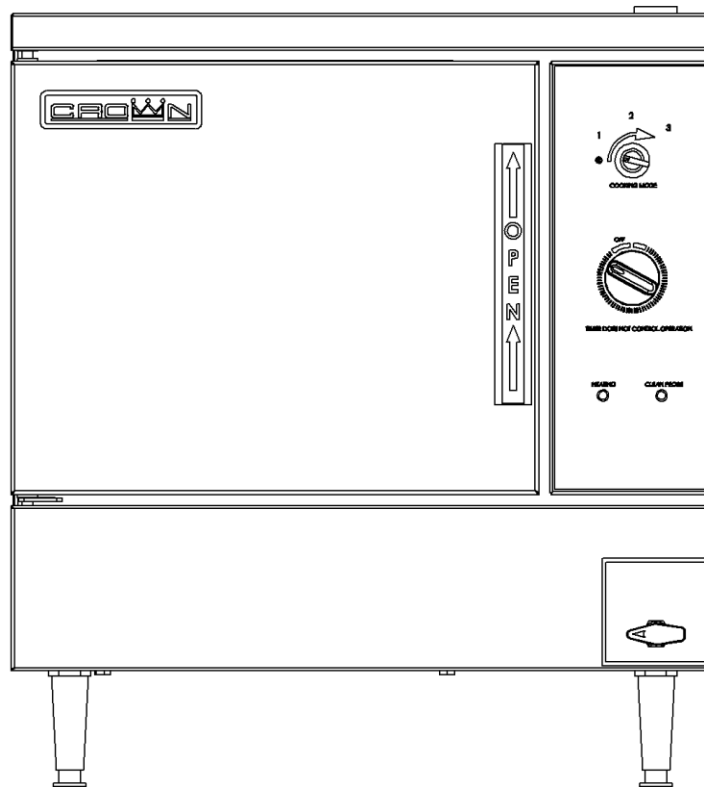


**IMPORTANT FOR FUTURE REFERENCE**  
 Please complete this information and retain this manual for the life of the equipment:

Model #: \_\_\_\_\_  
 Serial #: \_\_\_\_\_  
 Date Purchased: \_\_\_\_\_

# PARTS LIST & SERVICE MANUAL

## Electric Counter Steamer CSE-4      CSE-6



**⚠ WARNING**

Improper installation, adjustment, alteration, service or maintenance can cause property damage, injury or death. Read the installation, operating and maintenance instructions thoroughly before installing or servicing this equipment.

**CROWN FOOD SERVICE EQUIPMENT**

A Middleby Company

70 Oakdale Road, Downsview (Toronto) Ontario, Canada, M3N 1V9

Telephone: 919-762-1000      www.crownsteamgroup.com

Printed in Canada



# TABLE OF CONTENTS

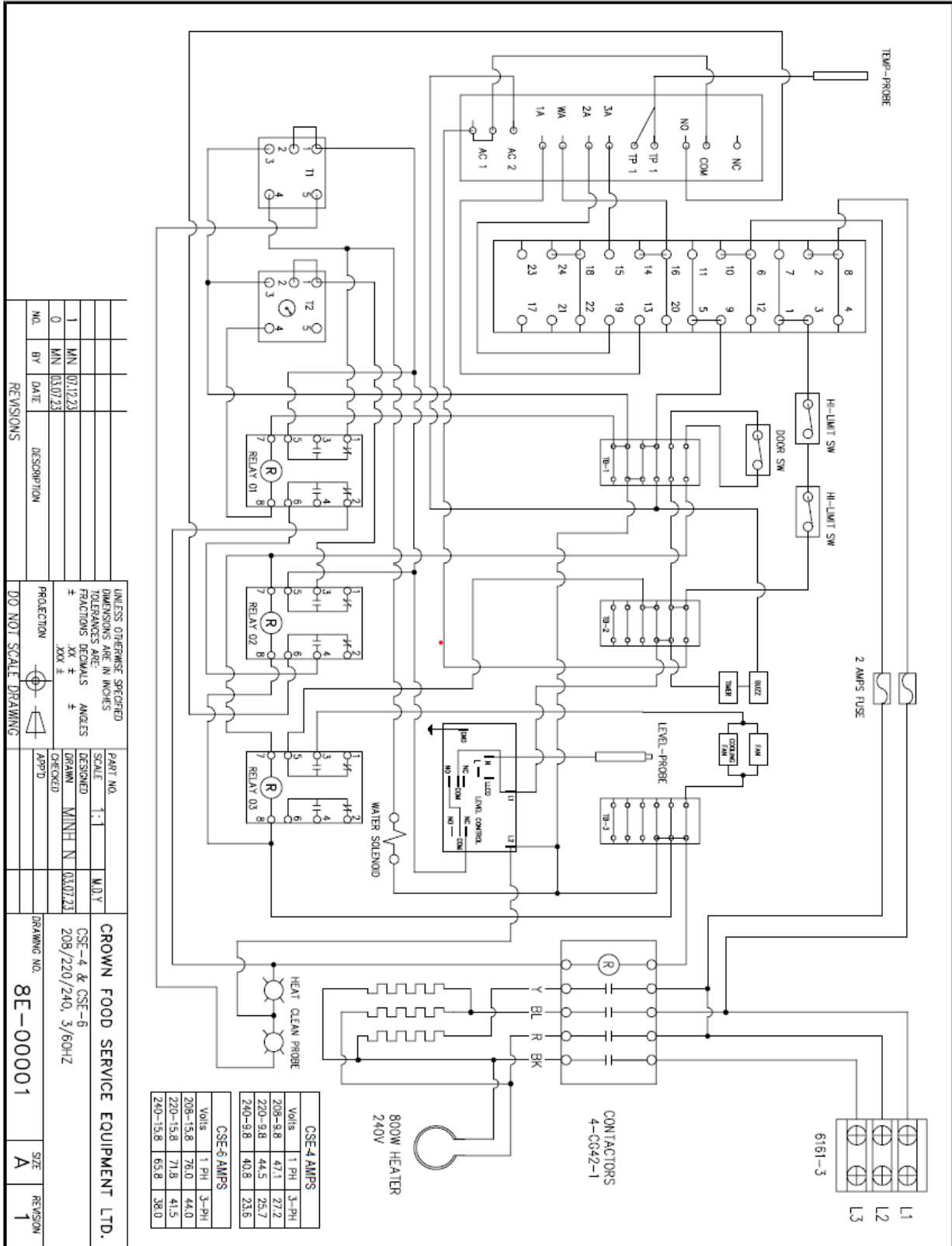
## WIRING DIAGRAM

208/220/240 VAC 3ph/60hz .....	3
208/220/240 VAC 1ph/60hz .....	4
380/415/480 VAC 3ph/60hz .....	5
380/220 & 415/220 VAC 3ph/60hz, 4 Wires.....	6

## ILLUSTRATED PARTS LIST

STEAMER ASSEMBLY .....	7
DOOR SUB-ASSEMBLY .....	10
FAN SUB-ASSEMBLY .....	12
COMPONENT BOARD SUB-ASSEMBLY .....	13

# 208/220/240 VAC 3ph/60hz



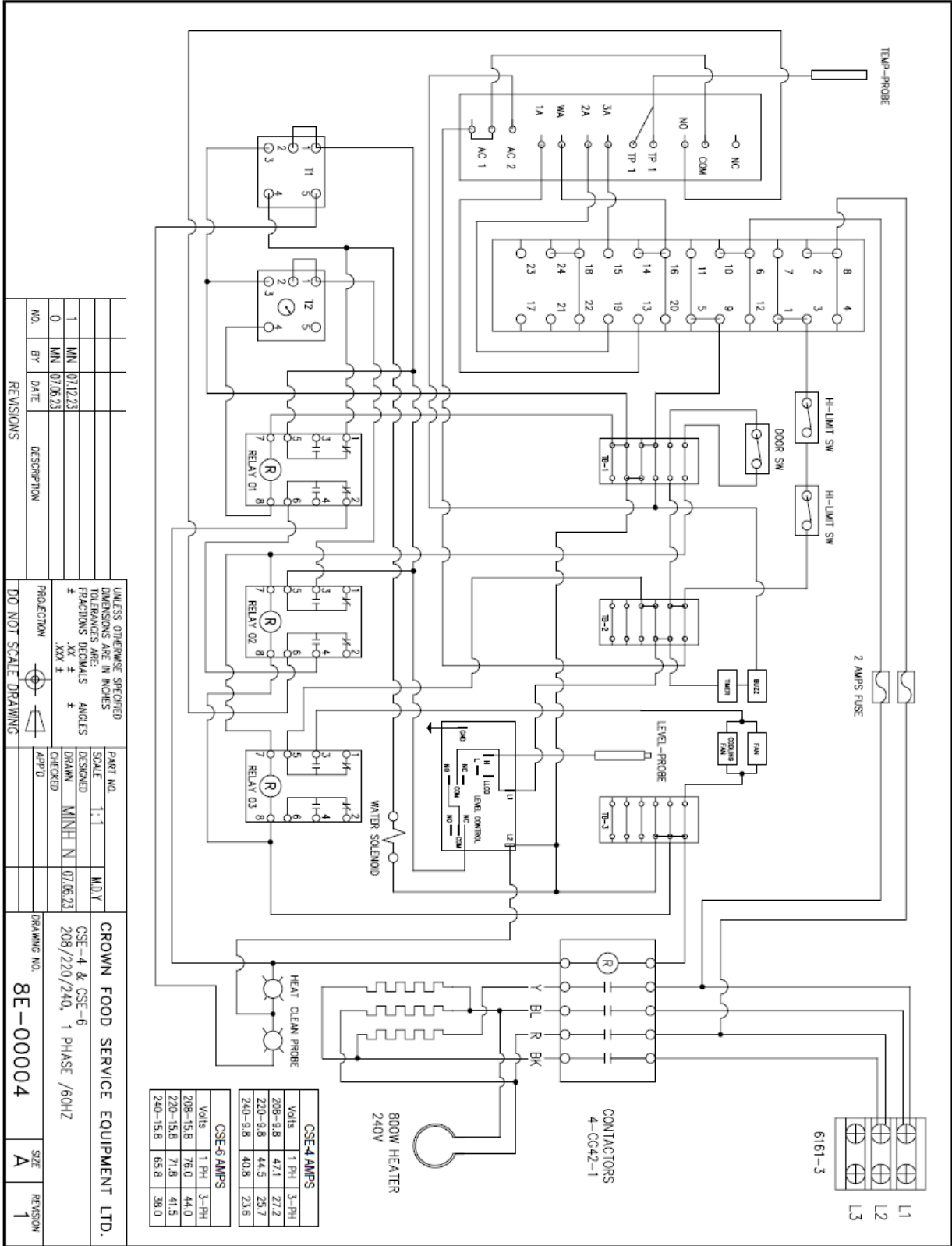
CSE-4 AMPS	
Volts	1 PH 3-PH
208-5-B	47.1 27.2
220-5-B	44.5 25.7
240-5-B	40.8 23.6

CSE-6 AMPS	
Volts	1 PH 3-PH
208-15-B	76.0 44.0
220-15-B	71.8 41.5
240-15-B	65.8 38.0

UNLESS OTHERWISE SPECIFIED DIMENSIONS ARE IN INCHES TOLERANCES ARE: FRACTIONS DECIMALS ANGLES		PART NO.	CROWN FOOD SERVICE EQUIPMENT LTD.	
±	±	SCALE	1:1	M.U.Y
±	±	DESIGNED	MINH N	03/07/23
±	±	DRAWN	MINH N	03/07/23
±	±	CHECKED		
±	±	APPR'D		
PROJECTION		DRAWING NO. 8E-00001		
DO NOT SCALE DRAWING		SIZE	REVISION	
REV NO.		BY	DATE	
1	MIN	07/12/23		
0	MIN	03/07/23		

# 208/220/240 VAC 1ph/60hz



REVISIONS		UNLESS OTHERWISE SPECIFIED		PART NO.	
NO.	BY	DATE	DESCRIPTION	SCALE	M.D.Y
1	MM	07.12.23		1:1	
0	MM	07.06.23			

DIMENSIONS ARE IN INCHES		DIMENSIONS ARE IN MILLIMETERS	
FRACTIONS DECIMALS	±	FRACTIONS DECIMALS	±
.xxx ±		.xxx ±	

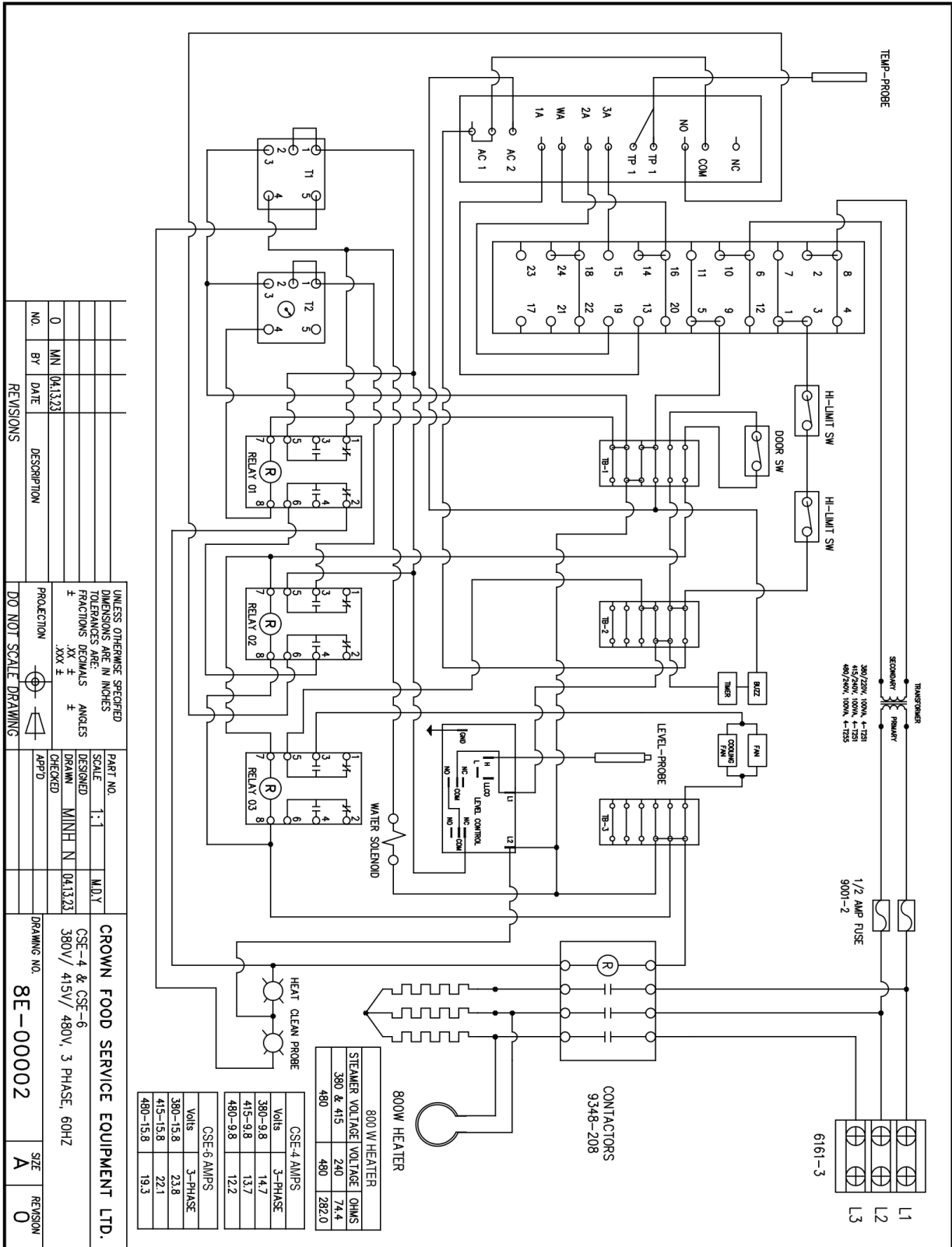
  

PROJECTION		DO NOT SCALE DRAWINGS	
APPROVED	DATE	APPROVED	DATE

CROWN FOOD SERVICE EQUIPMENT LTD.		DRAWING NO.	
CSE-4 & CSE-6	208/220/240, 1 PHASE /60HZ	8E-00004	1

# 380/415/480 VAC 3ph/60hz

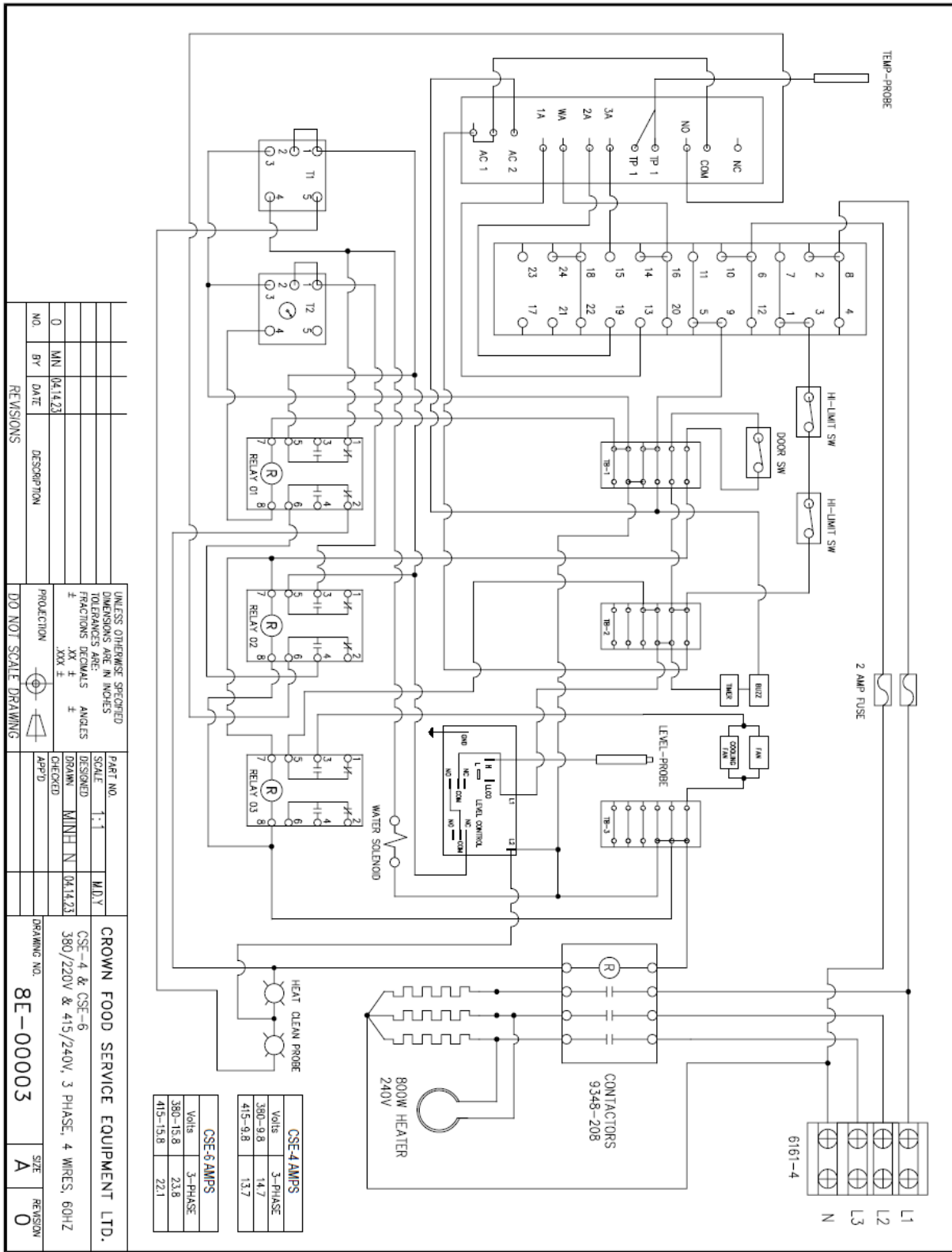


NO.	BY	DATE	DESCRIPTION
0	MM	04.13.23	

UNLESS OTHERWISE SPECIFIED	PART NO.	SCALE	M.D.Y
DIMENSIONS ARE IN INCHES	DESIGNED	1:1	
TOLERANCES ARE:	DRAWN	MINH N	04.13.23
FRACTIONS DECIMALS	CHECKED		
F ANGLES	APP'D		
XX ±			
.XX ±			
PROJECTION			
DO NOT SCALE DRAWING			

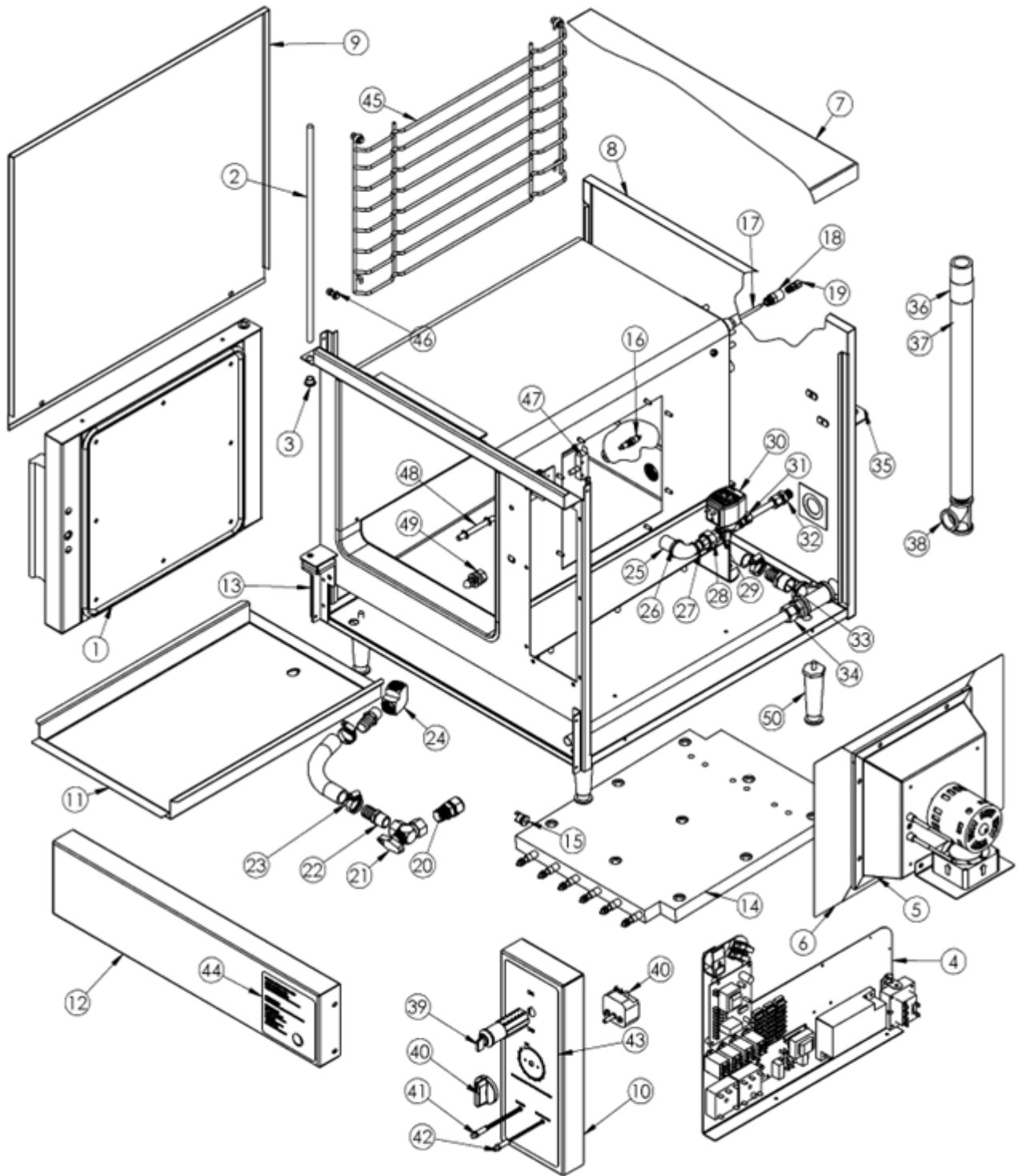
CROWN FOOD SERVICE EQUIPMENT LTD.	
DRAWING NO.	SIZE
8E-00002	A
REVISION	0

# 380/220 & 415/220 VAC 3ph/60hz, 4 Wires



UNLESS OTHERWISE SPECIFIED DIMENSIONS ARE IN INCHES TOLERANCES ARE: FRACTIONS DECIMALS ANGLES ± .XX ± .XXX ±		PART NO.	SCALE	DATE
DRAWN: MINE N		DESIGNED: MINE N	1:1	M.N.Y
CHECKED: APP'D		APP'D:		
PRODUCTION		DO NOT SCALE DRAWING		
DESCRIPTION				
NO.	BY	DATE		
0	MN	04.14.23		

# STEAMER ASSEMBLY



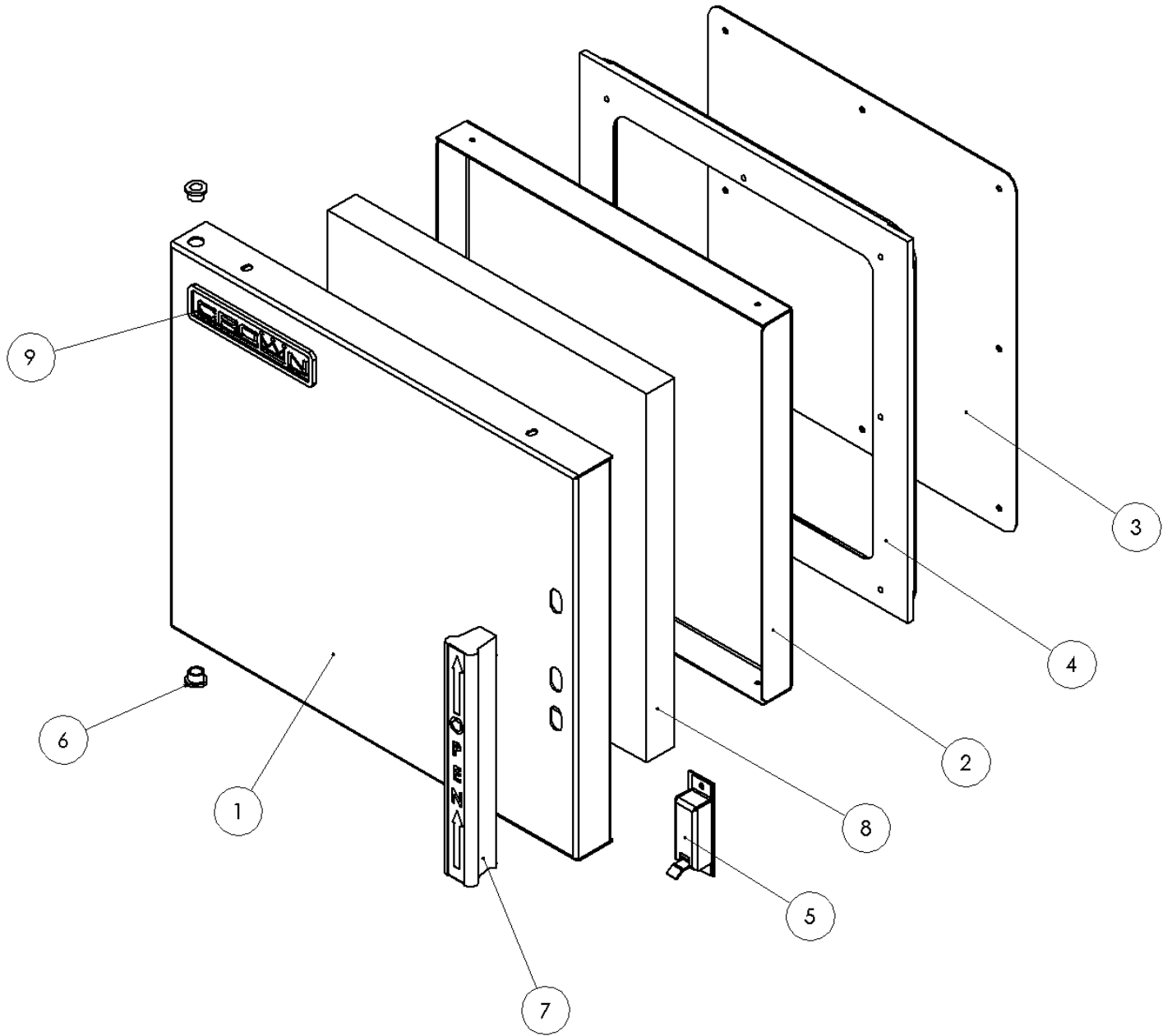
## STEAMER ASSEMBLY

ITEM NO.	PART NUMBER	DESCRIPTION	CSE-4	CSE-6
1	3935-8	DOOR ASSEMBLY	1	
	3935-10	DOOR ASSEMBLY		1
2	03-000082-1	HINGE ROD	1	
	03-000082-2	HINGE ROD		1
3	3506-1	BRONZE BUSHING, DOOR SPACER	1	1
4	01-000115-1	CONTROL BOARD ASSEMBLY	1	1
5	01-000114-1	FAN ASSEMBLY	1	1
6	02-000153-1	AIR DEFLECTOR	1	1
7	02-000250-1	TOP PANEL	1	1
8	01-000129-1	BACK PANEL ASSEMBLY	1	
	01-000129-2	BACK PANEL ASSEMBLY		1
9	02-000247-1	RH PANEL	1	
	02-000247-2	LH PANEL	1	
	02-000247-3	RH PANEL		1
	02-000247-4	LH PANEL		1
10	02-000237-1	ANALOG INTERFACE PANEL	1	
	02-000237-2	ANALOG INTERFACE PANEL		1
11	01-000263-1	RESERVIOR COVER ASSEMBLY	1	1
12	02-000239-1	ELEMENT COVER	1	1
13	02-000152-1	ELEMENT COVER BRACKET	2	2
14	6921-1	ELEMENT ASSEMBLY, 208V, 9kW	1	1
	6921-2	ELEMENT ASSEMBLY, 220V, 380V, 9kW	1	1
	6921-3	ELEMENT ASSEMBLY, 240V, 415V, 9kW	1	1
	6921-4	ELEMENT ASSEMBLY, 480V, 9kW	1	1
	6921-5	ELEMENT ASSEMBLY, 600V, 9kW	1	1
	6921-6	ELEMENT ASSEMBLY, 208V, 15kW	1	1
	6921-7	ELEMENT ASSEMBLY, 220V, 380V, 15kW	1	1
	6921-8	ELEMENT ASSEMBLY, 240V, 415V, 15kW	1	1
	6921-9	ELEMENT ASSEMBLY, 480V, 15kW	1	1
	6921-10	ELEMENT ASSEMBLY, 600V, 15kW	1	1
15	4914-2	HI-LIMIT THERMOSTAT	2	2
16	92-0054	WATER LEVEL SENSE PROBE	1	1
17	92-0078	PROBE, CAVITY TEMP	1	1
18	10-3323	BUSHING NYLON 1/4 X 1 CP041501	1	1
19	92-0085	MALE CONNECTOR, 1/8 NPT X 3/16	1	1
20	9768-17	BRASS CONNECTOR 5/8 C X 1/2 MPT	1	1
21	92-0738	MANUAL 90° DRAIN VALVE	1	1

## STEAMER ASSEMBLY

ITEM NO.	PART NUMBER	DESCRIPTION	CSE-4	CSE-6
22	90-8058	FITTING, BRASS, 1/2 MNPT TO 3/4 BARB	3	3
23	9017-3	WORM-DRIVE CLAMPS WITH SMOOTH BAND	4	4
24	9790-3	HIGH-PRESSURE BRASS PIPE FITTING	1	1
25	92-0059	WATER INLET	1	1
26	92-0045	ELBOW, REDUCING, 1/2 TO 1/4, BRONZE	1	1
27	92-0061	NIPPLE, BRASS, 1.5", 1/4" MNPT	1	1
28	92-0039	UNION, BRASS, 1/4" NPT	1	1
29	50610	NIPPLE, BRASS, 1/4 NPT X .875"	1	1
30	92-0172	SOLENOID VALVE, 250 V	1	1
31	9768-9	BRASS CONNECTOR 3/8 C X 3/8 MPT	1	1
32	9739-2	COMPRESSION FITTING 3/8 TUBE	1	1
33	08-4852	FITTING, BRASS, 3/4 NPT TO 3/4 TUBE	1	1
34	9768-18	BRASS CONNECTOR 5/8 C X 3/4 MPT	1	1
35	02-000151-1	VENT BRACKET	1	1
36	06-000026-1	316 STAINLESS STEEL THREADED PIPE FITTING	1	1
37	08-1202	BARBED HOSE FITTING 3/4 NPT x 1" ID HOSE	2	2
38	08-4990	TEE, BRASS, 3/4	2	2
39	92-0125	SWITCH, ROTARY	1	1
40	92-0137	60-MINUTE TIMER	1	1
	92-0138	TIMER KNOB	1	1
41	92-0184	LIGHT, NEON, 250V, AMBER	1	1
42	92-0185	LIGHT, NEON, 250V, RED	1	1
43	10-000005-1	ANALOG DECAL	1	
	10-000005-2	ANALOG DECAL		1
44	10-000010-1	DRAIN DECAL	1	1
45	2681-2	PAN RACK (4) C/W HOOK	2	
	2681-3	PAN RACK (6) C/W HOOK		2
46	4721-1	HANGER PIN ASSEMBLY (PAN RACK)	6	6
47	9208-1	LIMIT SWITCH	1	1
48	3775-1	ACTUATOR ROD WITH CLIP	1	1
49	3498-1	STRIKER - STEAMER DOOR	1	1
50	3952-1	LEG / ADJUSTABLE SQUARE FOOT FLANGE	4	4

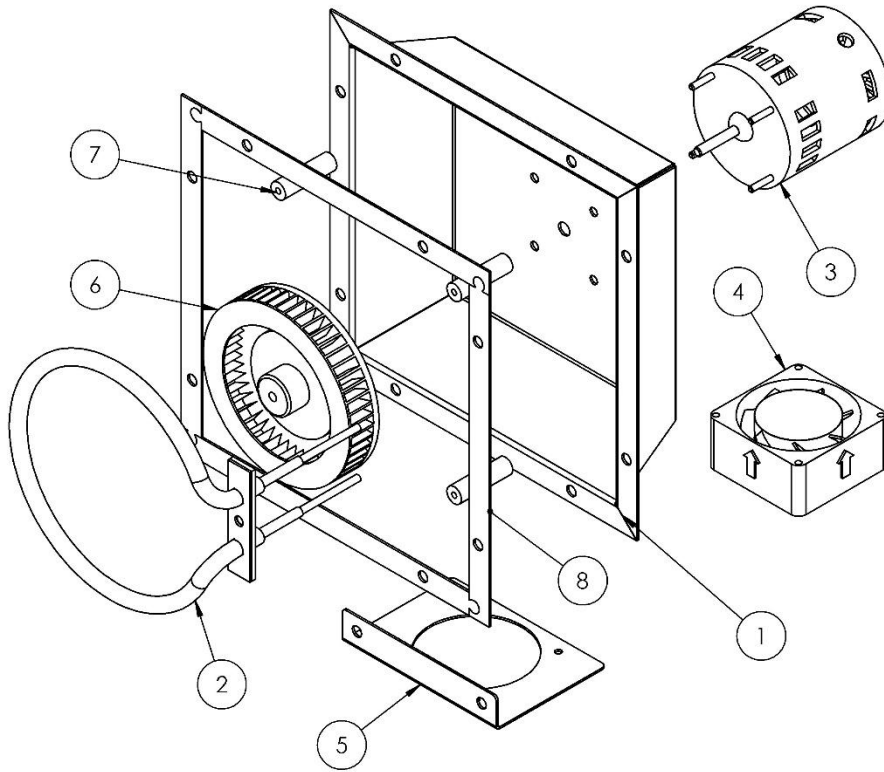
# DOOR SUB-ASSEMBLY



## DOOR SUB-ASSEMBLY

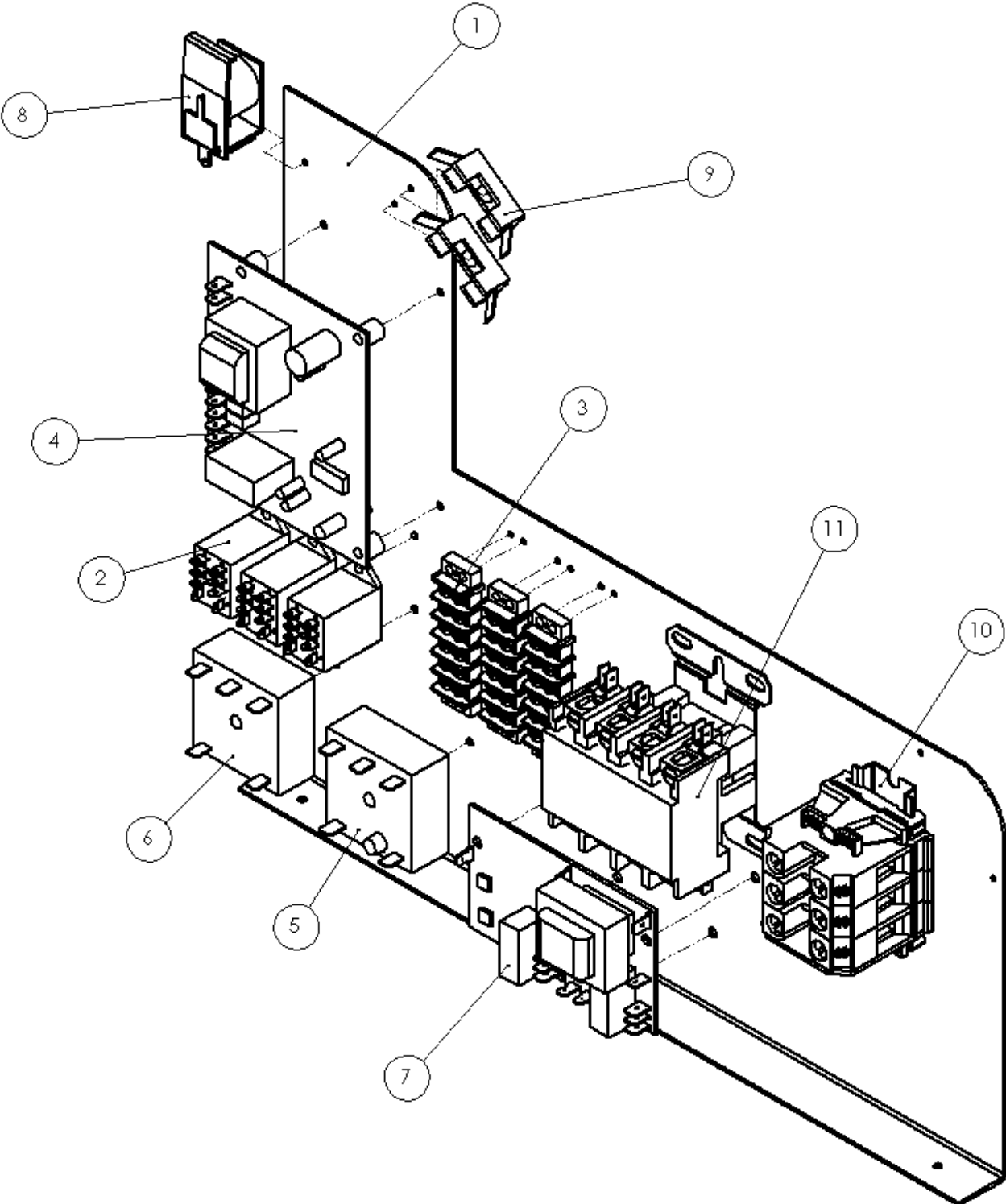
ITEM NO.	PART NUMBER	DESCRIPTION	QUANTITY	
			CSE-4	CSE-6
1	2837-1	OUTER DOOR SHELL	1	
	2837-2	OUTER DOOR SHELL		1
2	2838-1	DOOR PANEL	1	
	2838-2	DOOR PANEL		1
3	2839-1	GASKET RETAINING PLATE	1	
	2839-2	GASKET RETAINING PLATE		1
4	2668-1	DOOR GASKET 4 PAN	1	
	14-000019-1	DOOR GASKET 6 PAN		1
5	3900-1	DOOR LOCK SUB ASSEMBLY	1	
6	3506-1	BRONZE BUSHING, DOOR SPACER	2	2
7	3903-2	DOOR HANDLE ASSEMBLY FOR STEAMER	1	1
8	14-0008	DOOR INSULATION	1	
	14-0009	DOOR INSULATION		1
9	9903-2	CROWN NAME PLATE	1	1

## FAN SUB-ASSEMBLY



ITEM NO.	PART NUMBER	DESCRIPTION	QTY.
1	02-000154-1	FAN HOUSING	1
2	07-000011-1	TUBULAR HEATER, 800W,240V	1
	07-000011-2	TUBULAR HEATER, 800W,480V	1
3	08-6905	MOTOR, 1/70 HP, 240V	1
4	9113-2	COOLING FAN 3"	1
5	02-000183-1	COOLING FAN BRACKET	1
6	03-000095-1	BLOWER WHEEL	1
7	03-000085-1	ALUMINIUM UNTHREADED SPACER	4
8	14-000018-1	GASKET FAN ASSEMBLY	4

# COMPONENT BOARD SUB-ASSEMBLY



## COMPONENT BOARD SUB-ASSEMBLY

ITEM NO.	PART NUMBER	DESCRIPTION	QTY.
1	02-000241-1	COMPONENT MOUNTING BOARD	1
2	9344-2	RELAY, 240V, DPDT	3
3	92-0140	STRIP TERMINAL, 6 POLE	3
4	92-0183	TEMPERATURE CONTROL BOARD, 240V	1
5	92-0187	TIMER, DELAY ON MAKE, 230V	1
6	92-0188	TIMER, SOLID STATE, 60 SEC	1
7	92-0181	CONTROLLER, WATER FILL, 240V	1
8	4742-1	BUZZER, 240V	1
9	08-6469	FUSE HOLDER	2
10	6161-3	MODULAR TERMINAL ASSEMBLY, 3 POLE, (208-600V)	1
11	4-CG42-1	CONTACTOR 4 POLE 208-240V COIL(OPTIONAL)	1