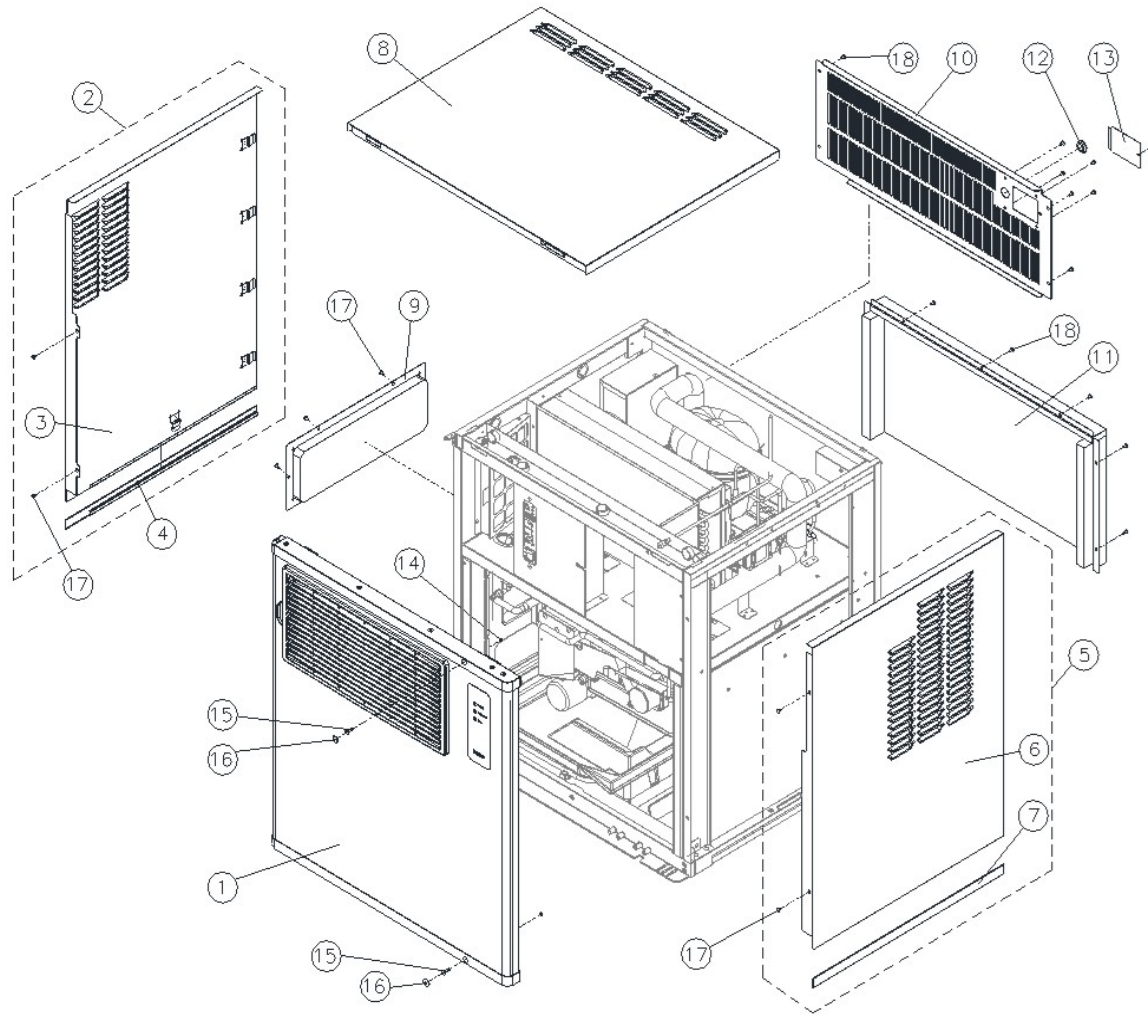


**IM-0480-AQ**  
**PARTS LIST (AC115V/60Hz)**  
**(Ver1.0)**

**Date of writing : June 29, 2025 (Ver.1)**

# IM-0485-AQ

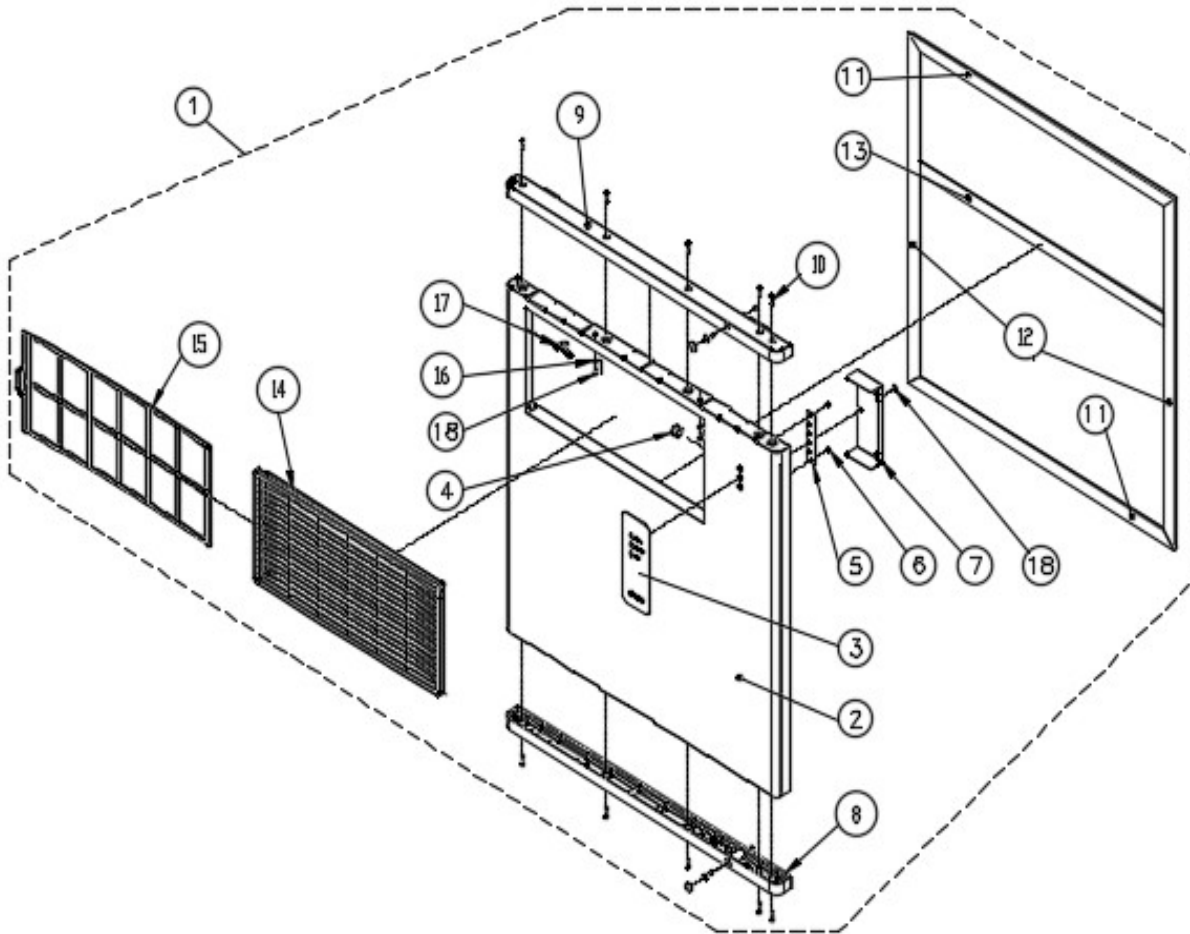
## [ COVER & PANEL PARTS ]



NO	ITEMS	CODE	SVC	Q'TY
1	FRONT PANEL T-ASS'Y(MSC)	422005100	YES	1
2	LEFT SIDE PANEL ASS'Y	420054900	YES	1
3	LEFT SIDE W-PANEL	349112100	YES	1
4	SIDE PANEL B-ENDCAP(L)	348010210	YES	1
5	RIGHT SIDE PANEL ASS'Y	420055000	YES	1
6	RIGHT SIDE W-PANEL	349112300	YES	1
7	SIDE PANEL B-ENDCAP(R)	348010320	YES	1
8	TOP COVER(MSC)	349113500	YES	1
9	WINDOW S-COVER ASS'Y	427061000	YES	1
10	REAR UPPER-PLATE	317238600	YES	1
11	REAR S-PANEL ASS'Y	427060900	YES	1
12	BUSHING(IDΦ18*ODΦ30)	232000400	YES	1
13	JUNCTION BOX COVER	317197900	YES	1
14	O-RING(AN105)	303036600	YES	2
15	COVER SCREW(M5xL20)	210818600	YES	2
16	CAP SILICON	319011120	YES	2
17	MACHINE SCREW(M4x8)	MTCX0816R	YES	10
18	TAP TIGHT SCREW(M4x10)	HTCX0820T	YES	19
19				
20				
21				
22				
23				
24				
25				
26				
27				
28				
29				
30				
31				
32				
33				
34				
35				

# IM-0485-AQ

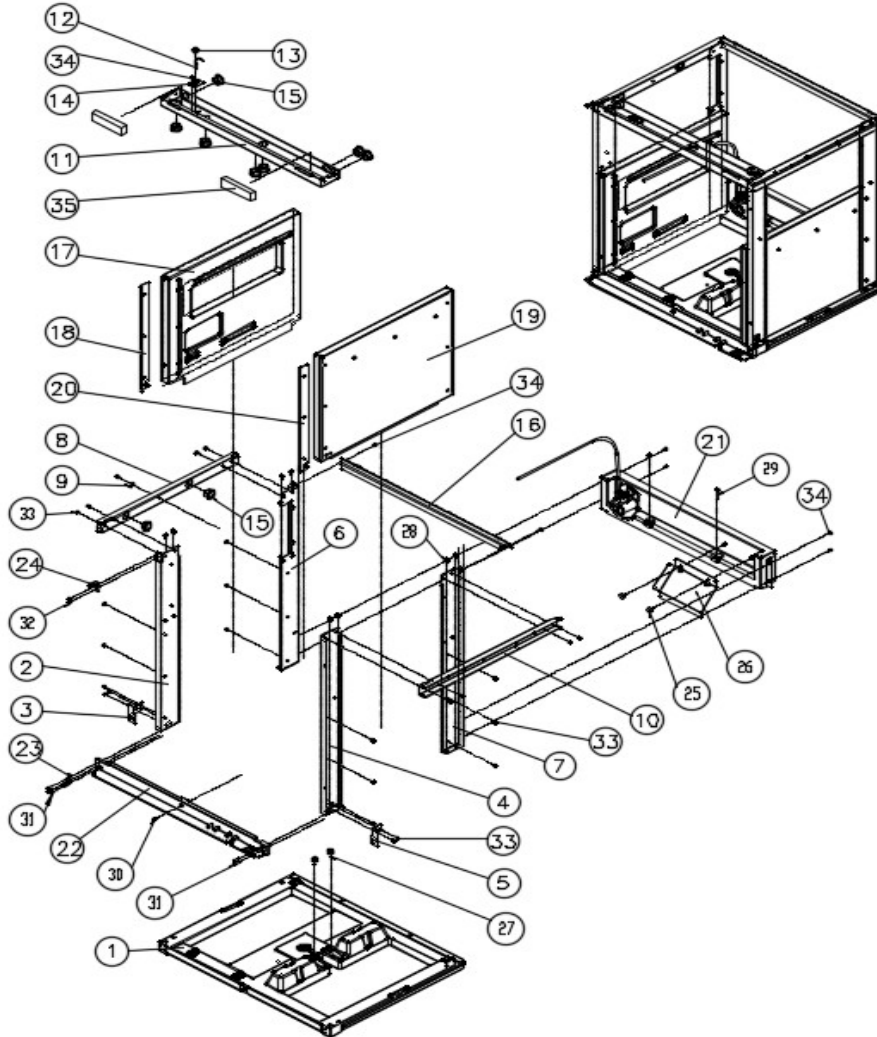
## [ FRONT PANEL T-ASSY ]



NO	ITEMS	CODE	SVC	Q'TY
1	FRONT PANEL T-ASS'Y(MSC)	422005100	YES	1
2	FRONT PANEL FOAM ASS'Y(MSC)	422004600	YES	1
3	FRONT DISPLAY(NEW LOGO)	440035400	YES	1
4	GROMMET BUSHING(ID15.5*OD21.7)	232003600	YES	1
5	DISPLAY PCB	367013000	YES	1
6	NUT HEX(M3)	215000600	YES	2
7	COVER DISPLAY-PCB	317224300	YES	1
8	FRONT BOTTOM CAP ASSY	432035010	YES	1
9	FRONT TOP CAP ASSY(FOR M5)	432034910	YES	1
10	MACHINE SCREW(FLAT HEAD M4x25)	MFCX0832R	YES	10
11	F-PANEL GASKET(TOP/LOW)	656004500	YES	2
12	F-PANEL GASKET(L/R)	656004540	YES	2
13	PANEL GASKET(IN)-500	656004610	YES	1
14	DUCT FILTER FRAME	228002600	YES	1
15	AIR FILTER	640010300	YES	1
16	CORD CLAMP(DARC-4)	227002200	YES	2
17	CLAMP(8N)	227001600	YES	1
18	MACHINE SCREW(M4x8)	MTCX0816R	YES	4
19				
20				
21				
22				
23				
24				
25				
26				
27				
28				
29				
30				
31				
32				
33				
34				
35				

# IM-0485-AQ

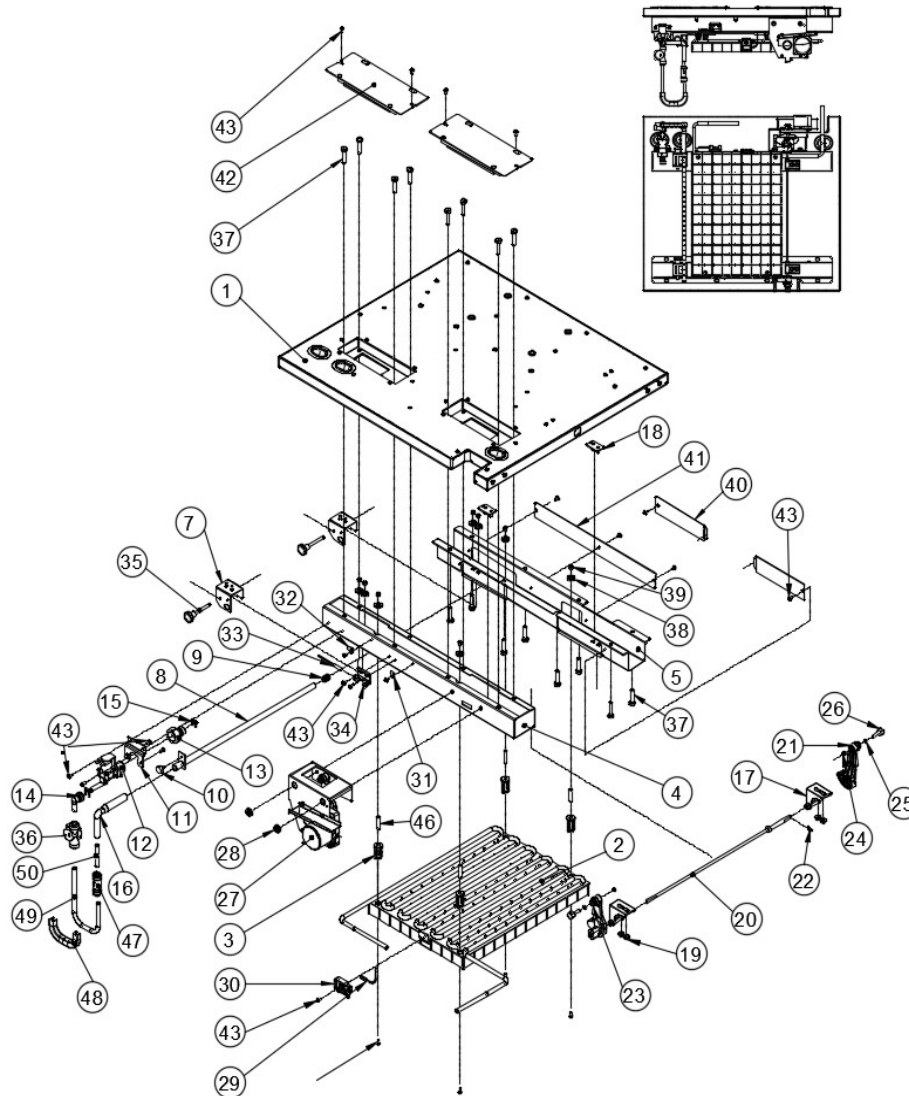
## [ BASE-FRMAE & FOAM-PANEL ASS'Y ]



NO	ITEMS	CODE	SVC	Q'TY
1	BASE FOAM PLATE ASSY	483032900	YES	1
2	FRONT SIDE FRAME(L)	348022300	YES	1
3	HINGE BASE BRACKET(L)	301243000	YES	1
4	FRONT SIDE FRAME®	348022400	YES	1
5	HINGE BASE BRACKET®	301243100	YES	1
6	REAR SIDE FRAME(L)	348022500	YES	1
7	REAR SIDE FRAME®	348022600	YES	1
8	UPPER S-REINFORCE(L)	348022700	YES	1
9	CORD CLAMP(DARC-4, L75)	227002200	YES	1
10	UPPER S-REINFORCE®	348022800	YES	1
11	FRONT TOP FRAME	348023100	YES	1
12	AIR SENSOR (M)	655009900	YES	1
13	SENSOR CAP	319009300	YES	1
14	COVER BRACKET(M-SENSOR)	301169400	YES	1
15	GROMMET BUSHING(ID24*OD31.5)	232003500	YES	9
16	REAR TOP FRAME	348023200	YES	1
17	SIDE FOAM-PANEL ASS'Y(L)	422004700	YES	1
18	S-PANEL COVER BKT(L)	301244700	YES	1
19	SIDE FOAM-PANEL ASS'Y®	422004801	YES	1
20	S-PANEL COVER BKT®	301244710	YES	1
21	REAR LOW-PANEL T-ASS'Y	422005200	YES	1
22	FRONT BOTTOM-FRAME(MSC)	341017400-	YES	1
23	HINGE BRACKET DOWN(전해연마)	321005220	YES	1
24	TOP HINGE BRACKET-L(전해연마)	321008610	YES	1
25	HAND SCREW(BLACK,M4*L9.8)	210804502	YES	2
26	ICE GUIDE (전해연마)	301243710	YES	1
27	KNOB SCREW(M5xL17)	210824800	YES	2
28	MACHINE SCREW(TRUSS,M5x12)	MTCX1022R	YES	8
29	MACHINE SCREW(TRUSS,M5x40)	MTCX1041R	YES	2
30	MACHINE SCREW(FLAT,M5x12)	MFCX1022R	YES	1
31	MACHINE SCREW(FLAT,M4x20)	MFCX0829R	YES	5
32	MACHINE SCREW(FLAT,M4x10)	MFCX0820R	YES	2
33	MACHINE SCREW(TRUSS,M4x8)	MTCX0816R	YES	18
34	TAP TIGHT SCREW(M4x8)	HTCX0820T	YES	14
35	FOAM SEAL(TOP-FRAME)	306052300	YES	2

# IM-0485-AQ

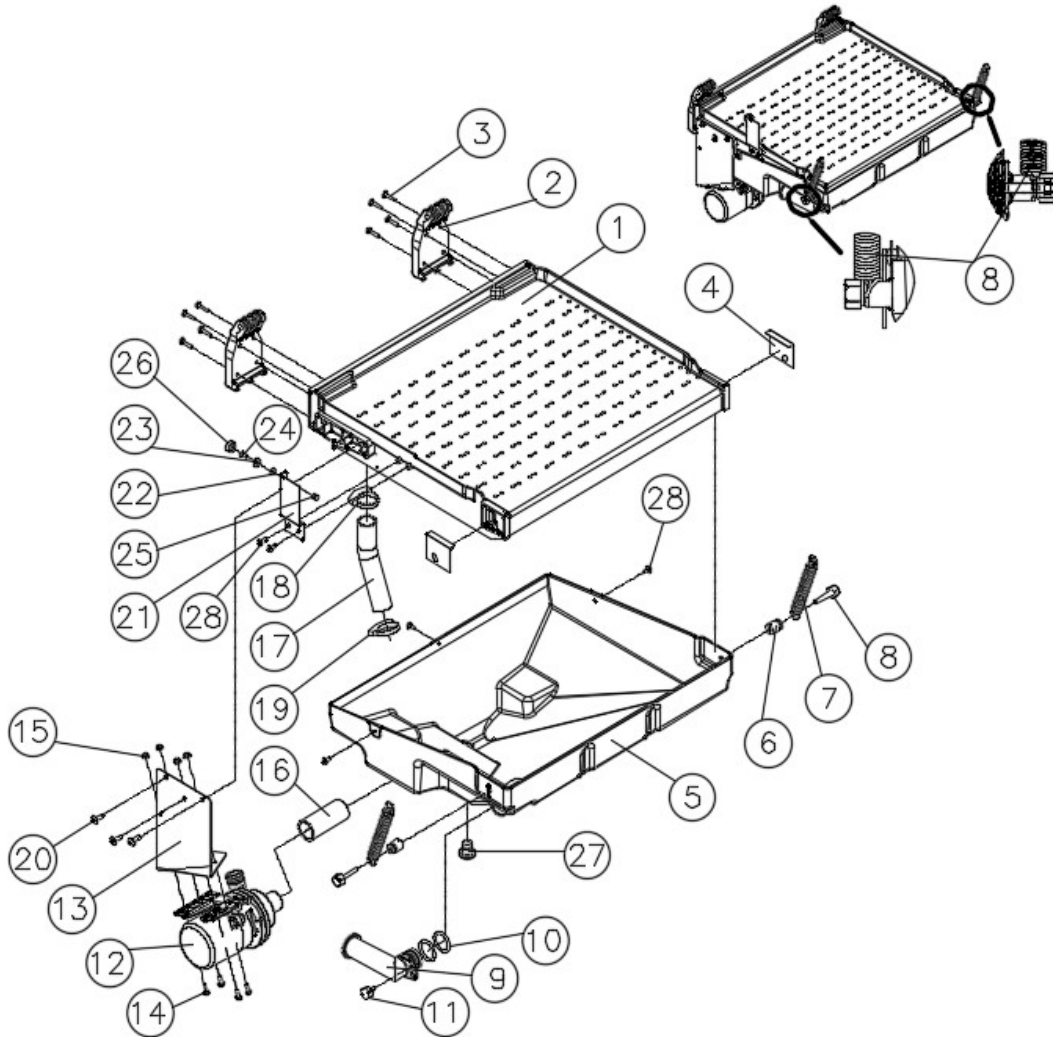
[ EVA.,MOTOR & W-VALVE SUB ASS'Y ]



NO	ITEMS	CODE	SVC	Q'TY
1	MIDDLE FOAM-PANEL ASS'Y	422005000	YES	1
2	EVA PLATING ASS'Y(MSC)	409047700	YES	1
3	EVA-COLLAR	345000300	YES	4
4	EVA. FRAME(F)	348022110	YES	1
5	EVA. FRAME(B)	348023310	YES	1
6	MACHINE SCREW(FLAT,M6x50)	MFCX1247R	YES	4
7	HANGER HOLDING W-ASS'Y	301244210	YES	2
8	W-SUPPLY PIPE ASS'Y	466004400-	YES	1
9	RUBBER PIPE-PLUG(Φ12)	303055500	YES	1
10	HAND SCREW(BLACK,M4*L9.8)	210804502	YES	1
11	BRACKET WATER-VALVE	301242810	YES	1
12	WATER VALVE(DC24V)	340029401	YES	1
13	TAP ADAPTOR	398013500	YES	1
14	STEM ELBOW	398013800	YES	1
15	LOCKING CLIP 3/8"	224002001	YES	2
16	SILICON-ELBOW(IN PIPE)	229038200	YES	1
17	BEARING CAM-SHAFT	310008100	YES	2
18	BEARING-CAM FIXING BKT	301245110	YES	2
19	SERRATED FLANGE NUT(M6)	215018306	YES	4
20	CAM SHAFT W-ASS'Y	430005810	YES	1
21	CAM(REAR)	663000300	YES	1
22	SPLIT PIN	315006600	YES	1
23	CAM(FRONT)	663000200	YES	1
24	NUT HEX(M6)	C00D02000	YES	2
25	O-RING(AN105)	303036600	YES	2
26	KNOB SCREW(M6xL17)	210824700	YES	2
27	ACT. MOTOR SUB ASS'Y	406030200	YES	1
28	BOLT HEX SEMS(M6x16)	610038500	YES	2
29	EVA SENSOR PT1000	655008230	YES	1
30	COVER FIXING SENSOR	346003600	YES	1
31	CLAMP(2N)	227003000	YES	1
32	CLAMP(5N)	227000100	YES	1
33	MAGNET SENSOR ASS'Y	701004600	YES	1
34	CLAMP MAGNET-SENSOR	346003901	YES	1
35	PIN-BALL LOCK	315009100	YES	2
36	WATER FLOW SENSOR(YF-S301)	655011900	YES	1
37	BOLT HEX	214004200	YES	16
38	WASHER SPRING	211005000	YES	8
39	NUT HEX(M6)	C00D02000	YES	8
40	COVER EVA-FRAME(B-F)	301256910	YES	2
41	COVER EVA-FRAME(B-B)	301256710	YES	1
42	FOAM COVER ASS'Y(M-PLATE)	427061100	YES	2
43	MACHINE SCREW(TRUSS,M4x8)	MTCX0816R	YES	20
44				
45				
46	SPACER-COLLAR(Φ8)	325169700	YES	4
47	CHECK VALVE	340031400	YES	1
48	CLIP-TUBE BEND	224002700	YES	2
49				
50				

# IM-0485-AQ

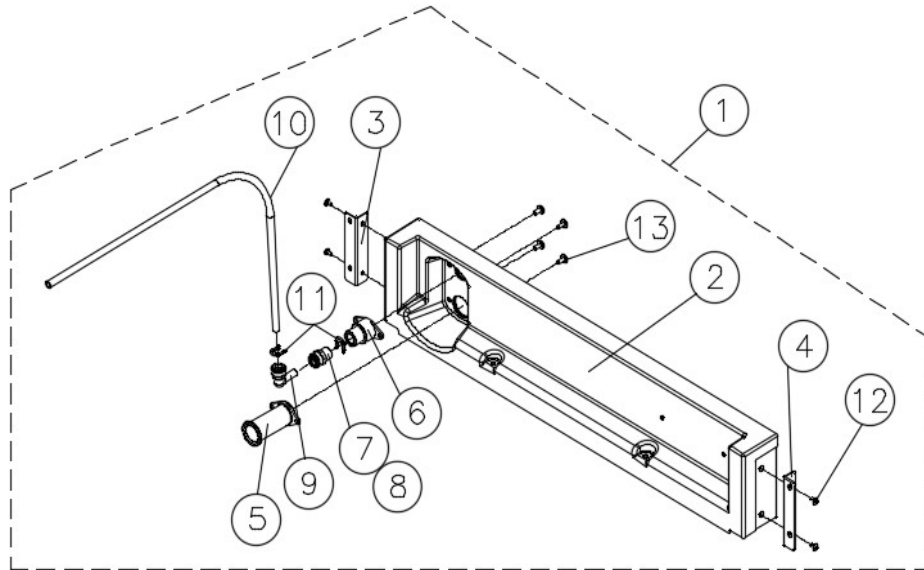
## [ WATER PLATE & PAN ASS'Y ]



NO	ITEMS	CODE	SVC	Q'TY
1	WATER PLATE ASS'Y	469004700	YES	1
2	WATER PAN HANGER	321009400	YES	2
3	TAPPING SCREW(TRUSS,M4x20)	TTCM0829R	YES	8
4	HOOK FIXING BRACKET(전해연마)	301244110	YES	2
5	WATER PAN	604003300	YES	1
6	SPACER-BOSS	314046900	YES	2
7	SPRING(CAM)-전해연마	323008600	YES	2
8	KNOB SCREW(M6xL32)	210824710	YES	2
9	PIPE DRAIN	336030300	YES	1
10	O-RING (P26)	303056800	YES	2
11	HAND SCREW(BLACK,M4*L9.8)	210804502	YES	1
12	PUMP MOTOR ASS'Y	353037600	YES	1
13	BRACKET PUMP(전해연마)	301244010	YES	1
14	BOLT HEX SEMS (M4x16)	214028716	YES	4
15	FLANGE NUT	215018304-	YES	4
16	PUMP-HOSE(INLET)	229039000	YES	1
17	PUMP-HOSE(OUTLET)	229039010	YES	1
18	CLAMP HOSE(SNP-24)	229039100	YES	1
19	CLAMP HOSE(SNP-28)	229026600	YES	1
20	TAPPING SCREW(TRUSS,M5x16)	TTCL1026R	YES	3
21	MAGNET FIXING BRACKET(전해연마)	301243910	YES	1
22	SPACE MAGNET	319007420	YES	1
23	CIRCLE MAGNET	322005410	YES	1
24	MACHINE SCREW(FLAT,M4x10)	MFCX0820R	YES	1
25	CAP NUT(M4)(전해연마)	210806000	YES	1
26	CAP MAGNET(ODΦ15)	319007310	YES	1
27	PACKING DOWN	303022000	YES	1
28	TAPPING SCREW(TRUSS,M4x12)	TTCM0822R	YES	5
29				
30				
31				
32				
33				
34				
35				

# IM-0485-AQ

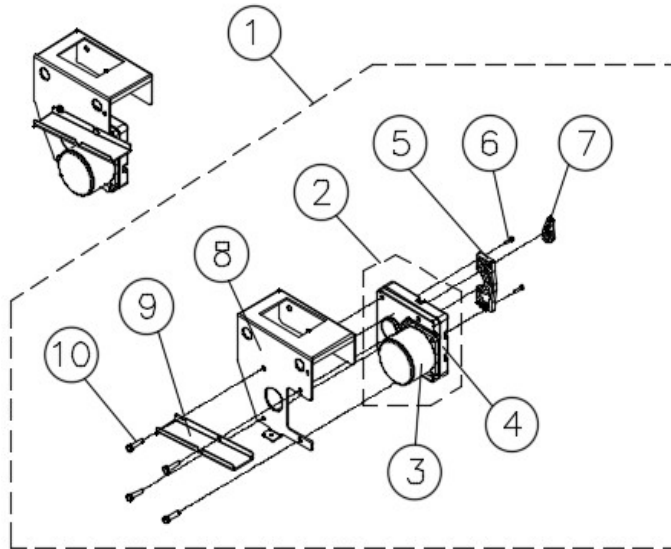
## [ REAR LOW-PANEL T-ASS'Y ]



NO	ITEMS	CODE	SVC	Q'TY
1	REAR LOW-PANEL T-ASS'Y	422005200	YES	1
2	REAR FOAM-PANEL ASS'Y	422004900	YES	1
3	REAR COVER S-BKT(L)	301242200	YES	1
4	REAR COVER S-BKT®	301242210	YES	1
5	DRAIN SOCKET(MSC)	215021200	YES	1
6	SOCKET(MSC)	215018720	YES	1
7	STRAIGHT ADAPTOR	398016500	YES	1
8	TAPE TEFLON	226001700	YES	0.01
9	STEM ELBOW	398013801	YES	1
10	PE TUBE(OD 3/8",L=610)	229013500-	YES	1
11	LOCKING CLIP 3/8"	224002001	YES	2
12	MACHINE SCREW(TRUSS,M4x8)	MTCX0816R	YES	4
13	MACHINE SCREW(TRUSS,M5x12)	MTCX1022R	YES	4
14				
15				
16				
17				
18				
19				
20				
21				
22				
23				
24				
25				
26				
27				
28				
29				
30				
31				
32				
33				
34				
35				

# IM-0485-AQ

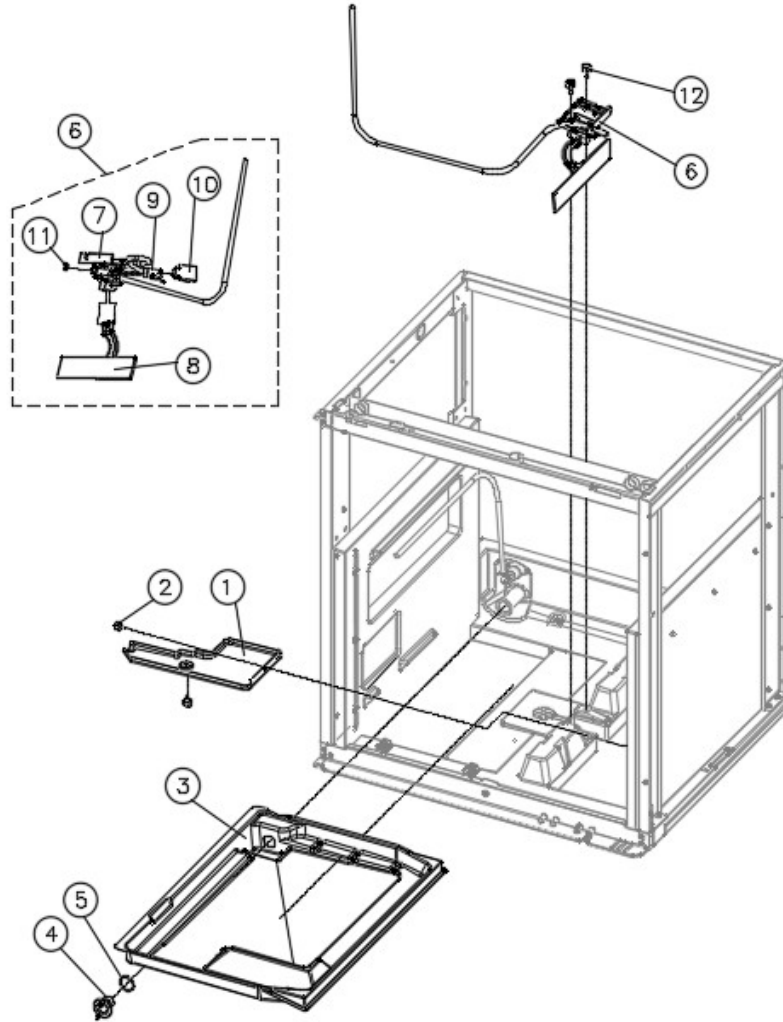
[ ACT. MOTOR SUB ASS'Y ]



NO	ITEMS	CODE	SVC	Q'TY
1	ACT. MOTOR SUB ASS'Y	406030200	YES	1
2	SYNC. MOTOR & G-BOX ASS'Y	406030400	NO	1
3	SYNCHRONOUS. MOTOR(MSC)	406030410	NO	1
4	GEAR BOX(MSC)	406030420	NO	1
5	HALL S-PCB CASE ASS'Y	415012700	YES	1
6	MACHINE SCREW(PAN, M3x12)	MPCX0622R	YES	2
7	HALL-SENSOR ROD	322006210	YES	1
8	BRACKET ACT.-MOTOR (전해연마)	301242910	YES	1
9	DRIP GUIDE(MOTOR), 전해연마	301250810	YES	1
10	BOLT HEX SEMS(M5x20), 전해연마	610038600	YES	4
11				
12				
13				
14				
15				
16				
17				
18				
19				
20				
21				
22				
23				
24				
25				
26				
27				
28				
29				
30				
31				
32				
33				
34				
35				

# IM-0485-AQ

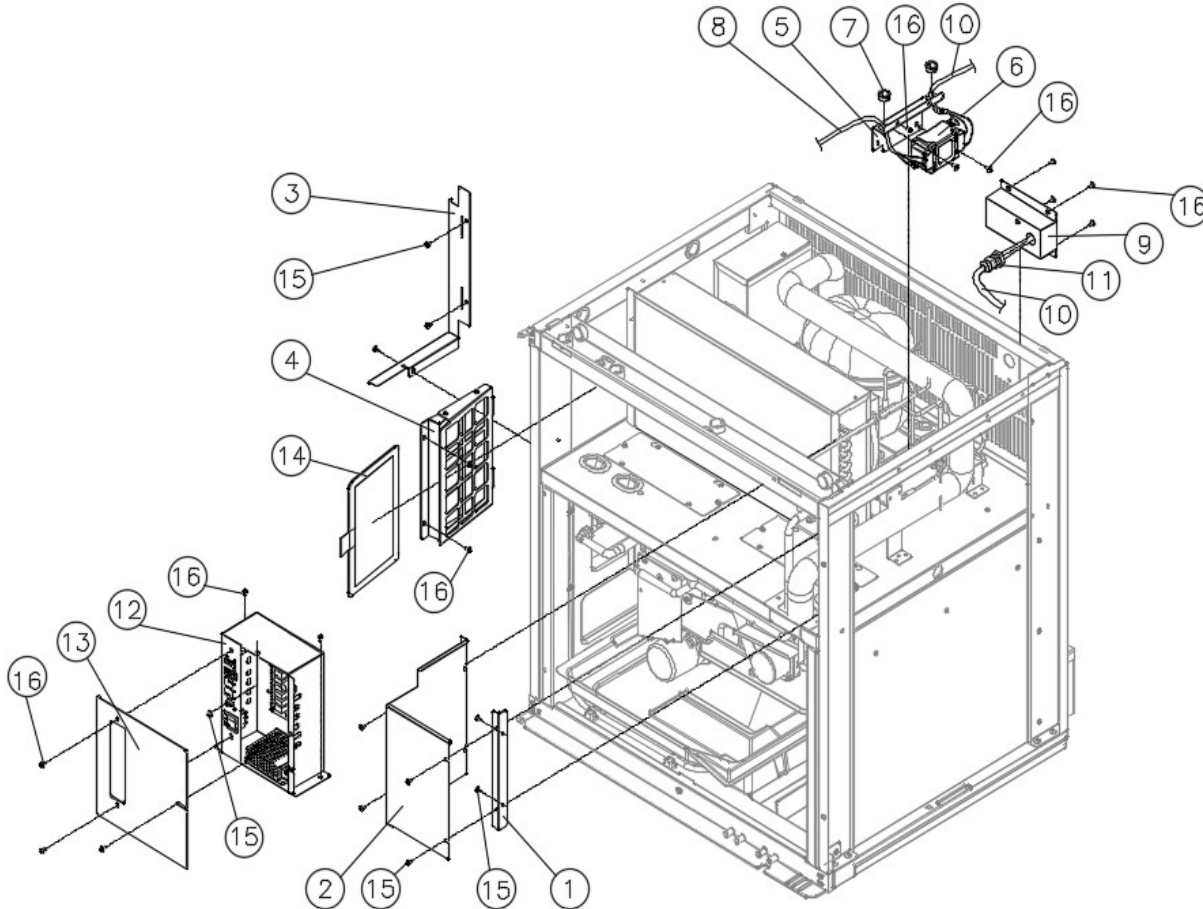
## [ DRIP TRAY, DRAIN PAN & BIN LEVEL S/W ASS'Y ]



NO	ITEMS	CODE	SVC	Q'TY
1	DRIP TRAY(G-BOX)	336030400	YES	1
2	HAND SCREW(BLACK,M4*L9.8)	210804502	YES	2
3	DRAIN PAN(MSC)	317234800	YES	1
4	DRAIN FLANGE	397002900	YES	1
5	O-RING (P27)	303056700	YES	1
6	BIN LEVEL SWITCH ASS'Y	460005300	YES	1
7	SWITCH BOX(ICE LEVEL)	309006400	NO	1
8	SWITCH ACTUATOR(ICE LEVEL)	309006600	NO	1
9	ASSY MICRO SWITCH	460005400	YES	1
10	COVER SWITCH-BOX	309006500	NO	1
11	CABLE TIE(100mm)	202000500	NO	1
12	KNOB SCREW(M5xL17)	210824800	YES	2
13				
14				
15				
16				
17				
18				
19				
20				
21				
22				
23				
24				
25				
26				
27				
28				
29				
30				
31				
32				
33				
34				
35				

# IM-0485-AQ

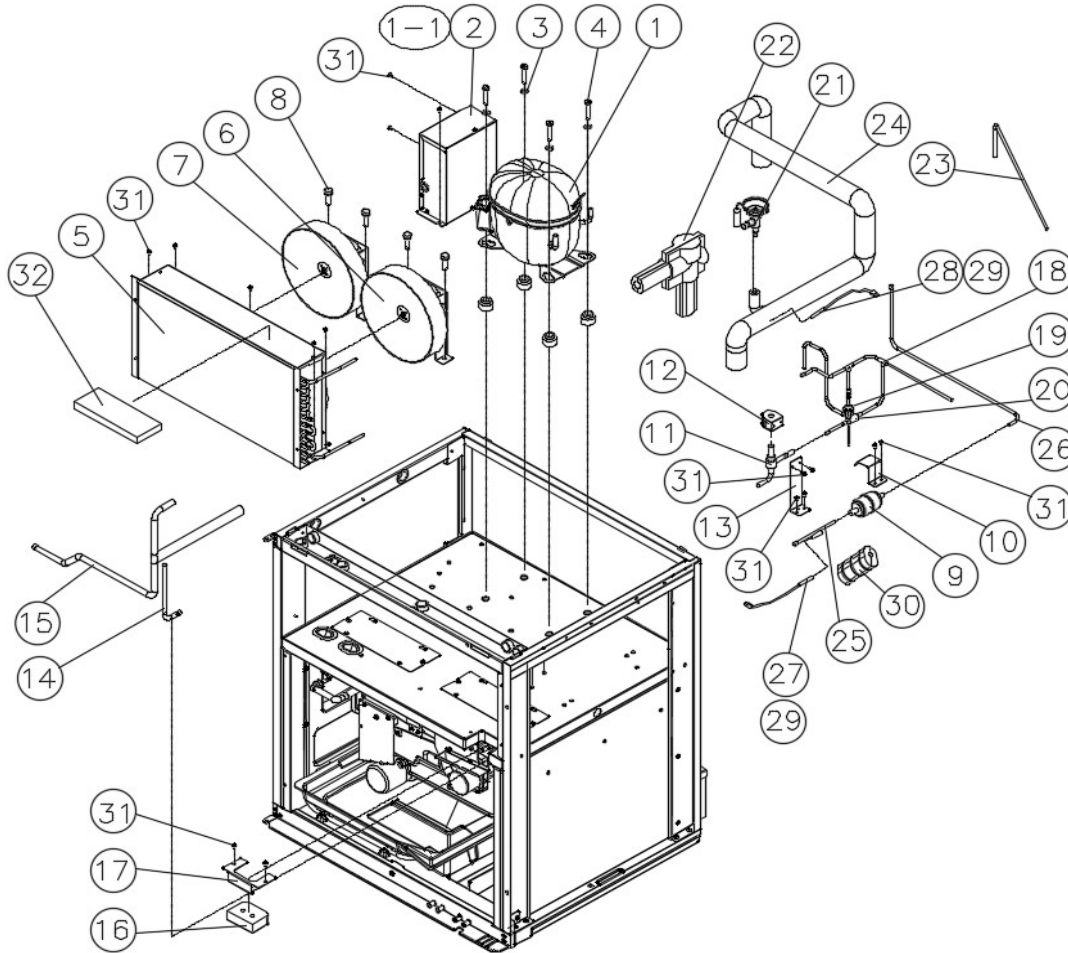
## [ ELECTRICAL PARTS ]



NO	ITEMS	CODE	SVC	Q'TY
1	AIR GUIDE BKT®	301249800	YES	1
2	COND AIR GUIDE-R	317237400	YES	1
3	COND. AIR GUIDE(L)	301254800	YES	1
4	COND. BRACKET ASS'Y(L)	427061500	YES	1
5	NOISE FILTER BRACKET	301249700	YES	1
6	NOISE FILTER	500000900	YES	1
7	GROMMET BUSHING	232003600	NO	2
8	HARNESS POWER	377201700	YES	1
9	JUNCTION BOX	374143800	YES	1
10	ASSY POWER CORD	722019600	YES	1
11	CABLE GLAND(DACL 13.5)	227001100	NO	1
12	CONTROL BOX ASSY	426076001	YES	1
13	CON.-BOX COVER	317237800	YES	1
14	FILTER CONDENSER(W150 x H241)	640010200	YES	1
15	TAP TIGHT SCREW(TRUSS,M4x8)	HTCX0820T	YES	10
16	MACHINE SCREW(TRUSS, M4x8)	MTCX0816R	YES	15
17				
18				
19				
20				
21				
22				
23				
24				
25				
26				
27				
28				
29				
30				
31				
32				
33				
34				
35				

# IM-0485-AQ

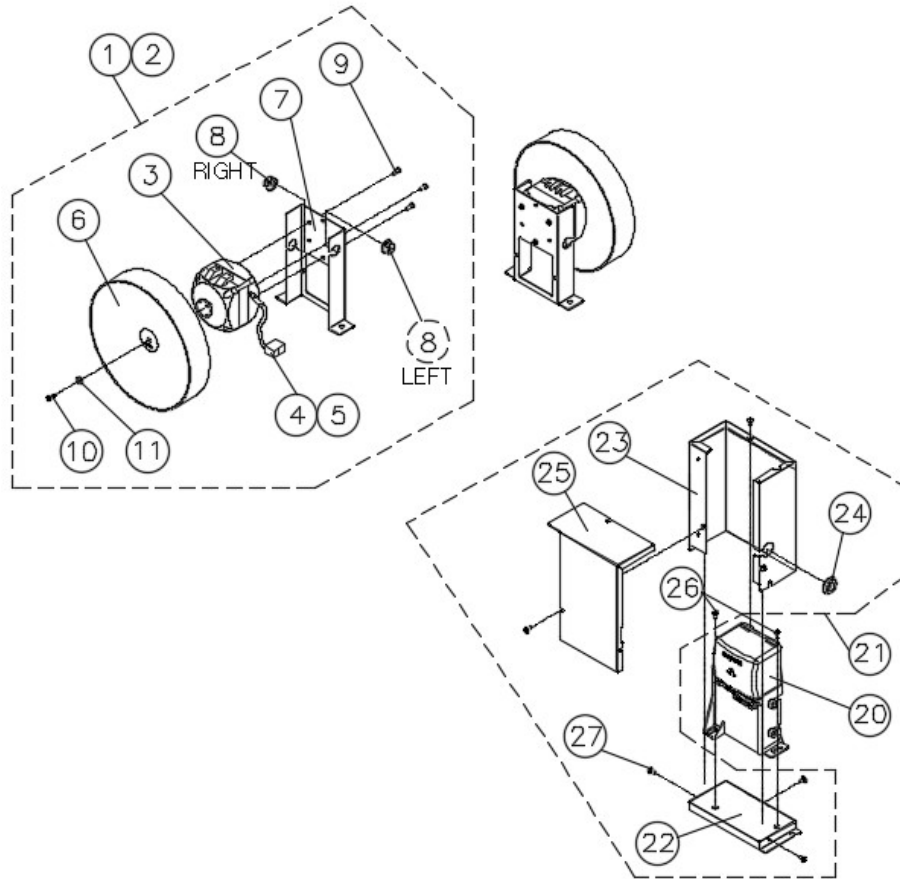
## [ REFRIGERATION PARTS ]



NO	ITEMS	CODE	SVC	Q'TY
1	COMP/NTX6222UV(115V/60Hz)	394025300	YES	1
1-1	CSR BOX ASS'Y(NTX6222UV)	426076200	YES	1
2	CSR BOX CASE ASSY(MSC)	426076800	YES	1
3	WASHER PLAIN(M8)	211003100	NO	1
4	BOLT HEX(M8x45)	B00E01450	NO	1
5	CONDENSER ASSY(OPΦ240)	411037300	YES	1
6	FAN MOTOR R-ASS'Y(FΦ230)	406008620	YES	1
7	FAN MOTOR L-ASS'Y(FΦ230)	406008630	YES	1
8	SCREW SEMS(S/W+P/W, M8x16))	210811200	YES	4
9	FILTER DRYER	372001600	YES	1
10	DRYER BRACKET	301126200	NO	1
11	SOLENOID VALVE BODY	340028200	YES	1
12	ASSY SOLENOID VALVE COIL (115V)	429008100	YES	1
13	H-GAS VALVE BRACKET	301243300	NO	1
14	EVA OUTLET PIPE	325169300	NO	1
15	EVA INLET PIPE	325169200	NO	1
16	FOAM SPACER(EVA PIPE)	306051600	YES	1
17	PIPE-SPACER COVER	301246400	YES	1
18	DISCHARGE PIPE ASS'Y(MSC-AIR)	433051400	NO	1
19	PRESSURE SWITCH	355027100	YES	1
20	STRAINER HOT GAS	605001300	YES	1
21	EXPANSION VALVE(ALL WELD TYPE)	340035200	YES	1
22	FOAM PE (EXPANSION)	306016700	YES	1
23	EXTENSION CHARGE NIPPLE(MSC)	325169100	NO	1
24	HEAT EXCHANGE PIPE ASS'Y(AIR)	433051300	NO	1
25	COND TO DRIER-IN PIPE	325169500	NO	1
26	DRIER OUTLET PIPE(MSC)	325169400	NO	1
27	EVA SENSOR SB(BLACK)	655008200	YES	1
28	EVA SENSOR SB(YELLOW)	655008220	YES	1
29	SENSOR CLIP	224002400	YES	2
30	FOAM SENSOR INSULATION	306043300	YES	1
31	MACHINE SCREW(TRUSS, M4x8)	MTCX0816R	YES	16
32	FOAM TOP-CONDENSER	306052200	YES	1
33				

# IM-0485-AQ

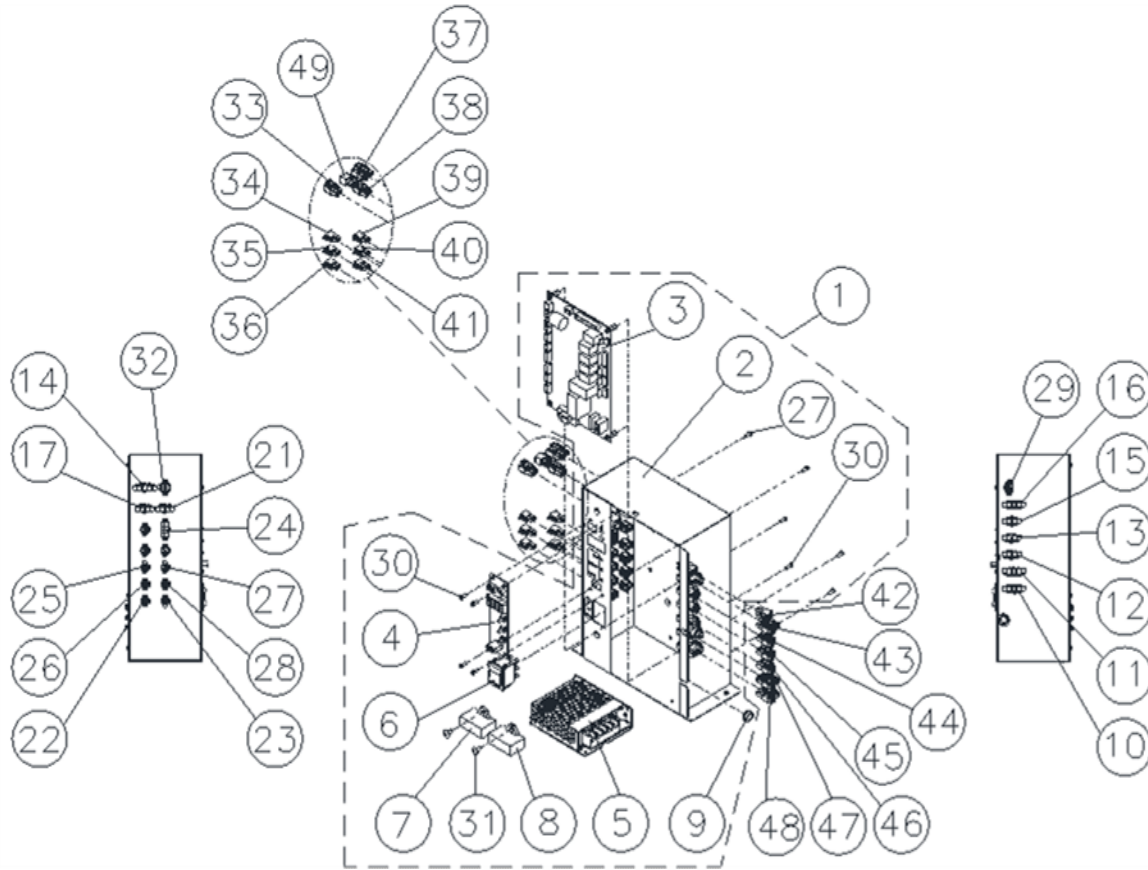
## [ FAN MOTOR ASS'Y ]



NO	ITEMS	CODE	SVC	Q'TY
1	FAN MOTOR R-ASS'Y(FΦ230)	406008620	YES	1
2	FAN MOTOR L-ASS'Y(FΦ230)	406008630	NO	1
3	FAN MOTOR/EURO(AC115V, 60Hz)	353025901	NO	1
4	TERMINAL	371000200	NO	2
5	HOUSING	370001700	NO	1
6	FAN	308004600	NO	1
7	FAN MOTOR BRACKET(FΦ230)	301255100	NO	1
8	GROMMET BUSHING	232003600	NO	1
9	PAN HEAD SCREW SEMS(M4x16)	210817510	NO	3
10	ROUNDER WASHER	MOTOR첨부품	NO	1
11	HEXA BOLT M4x11	MOTOR첨부품	NO	1
20	CSR BOX ASS'Y(NTX6222UV)	426076200	YES	1
21	CSR BOX CASE ASSY(MSC)	426076800	YES	1
22	CSR-BOX BASE BRACKET(MSC)	301253300	NO	1
23	CSR-BOX BODY CASE(MSC)	301253400	NO	1
24	BUSHING(IDΦ18*ODΦ30)	232000400	NO	1
25	CSR-BOX COVER BKT(MSC)	301253500	NO	1
26	MACHINE SCREW(TRUSS,M4x8)	MTCX0816R	NO	2
27	TAP TIGHT SCREW(TRUSS,M4x8))	HTCX0820T	NO	5
28				
29				
30				
31				
32				
33				
34				

# IM-0485-AQ

## [ CONTROL BOX & HARNESS PARTS ]



NO	ITEMS	CODE	SVC	Q'TY
1	CONTROL BOX ASSY	426076000	YES	1
2	CONTROL BOX	374154300	YES	1
3	MAIN PCB	415013000	YES	1
4	FND PCB	367017200	YES	1
5	SMPS	629001500	YES	1
6	ROCKER SWITCH	355025600	YES	1
7	CAPACITOR	387005600	YES	1
8	CAPACITOR	387005800	YES	1
9	BUSHING(IDΦ7)	232007200	NO	1
10	HARNESS BOX POWER	377201600	NO	1
11	HARNESS BOX COMP	377201800	NO	1
12	HARNESS BOX FAN	377202000	NO	1
13	HARNESS BOX FAN		NO	1
14	HARNESS BOX PUMP	377202100	NO	1
15	HARNESS BOX HOT	377202200	NO	1
16	HARNESS BOX H-MOTOR	377202300	NO	1
17	HARNESS BOX WATER	377202400	NO	1
18	HARNESS BOX FND	377202600	NO	1
19	HARNESS BOX USB	377202700	NO	1
20	HARNESS BOX SWITCH	377202800	NO	1
21	HARNESS BOX HPS	377202900	NO	1
22	HARNESS BOX FULL SW	377203000	NO	1
23	HARNESS BOX MAGNETIC	377203100	NO	1
24	HARNESS BOX LED	377203200	NO	1
25	HARNESS BOX TEMP(AIR SENSOR)	377203400	NO	1
26	HARNESS BOX TEMP(EVA TEMP)		NO	1
27	HARNESS BOX TEMP(COND OUT)		NO	1
28	HARNESS BOX TEMP(EVA OUT)		NO	1
29	HARNESS BOX M-SENSOR	377203500	NO	1
30	MACHINE SCREW(PAN, M3xL8)	MPCX0616R	NO	10
31	MACHINE SCREW(TRUSS, M4x10)	MTCX0820R	NO	2
32	HARNESS BOX FLOW	377208700	NO	1
33	PRESSURE SWITCH	355027100	NO	1
34	EVA SENSOR SB(BLACK, COND OUT)	655008200	NO	1
35	EVA SENSOR SB(YELLOW,EVA OUT)	655008220	NO	1
36	MAGNET-SENSOR SUB ASS'Y	461001100	NO	1
37	PUMP MOTOR ASS'Y	353037600	NO	1
38	WATER VALVE	340029400	NO	1
39	AIR SENSOR (M)	655009900	NO	1
40	EVA SENSOR PT1000	655008230	NO	1
41	ASSY MICRO SWITCH	460005400	NO	1
42	HARNESS LED	377203300	NO	1
43	SYNCHRONOUS. MOTOR(MSC)	406030410	NO	1
44	SOLENOID VALVE COIL (115V)	340028310	NO	1
45	FAN MOTOR R-ASS'Y(FΦ230)	406008620	NO	1
46	FAN MOTOR L-ASS'Y(FΦ230)	406008630	NO	1
47	HARNESS COMP	377201900	NO	1
48	HARNESS POWER	377201700	NO	1
49	HARNESS FLOW SENSOR	377164110	NO	1