

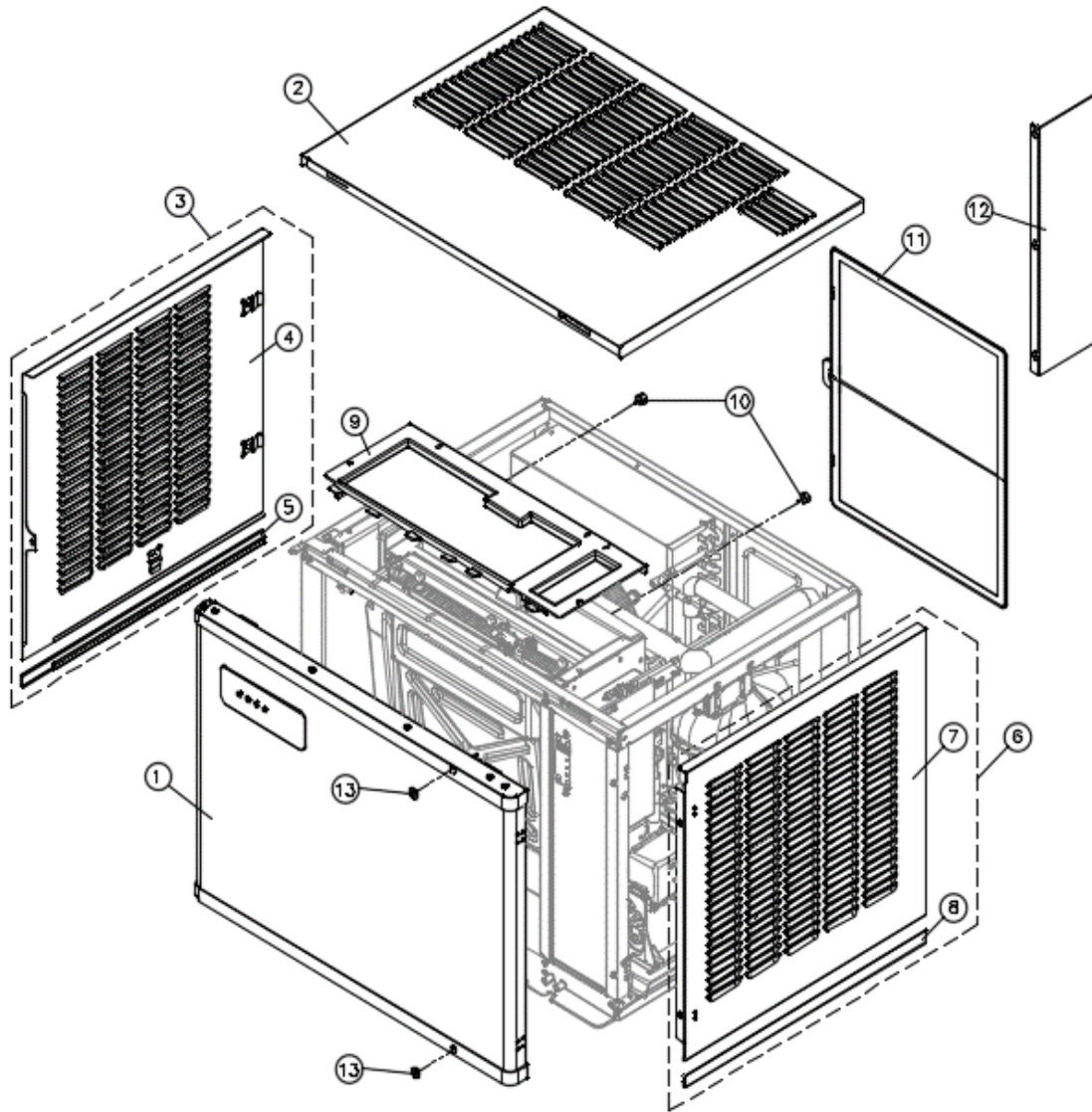
IM-0750-AC/AH  
PARTS LIST(220V/60HZ)

**Korean** Model : N/A

(Ver 2.1)

# IM-0350,0460,0550,0750

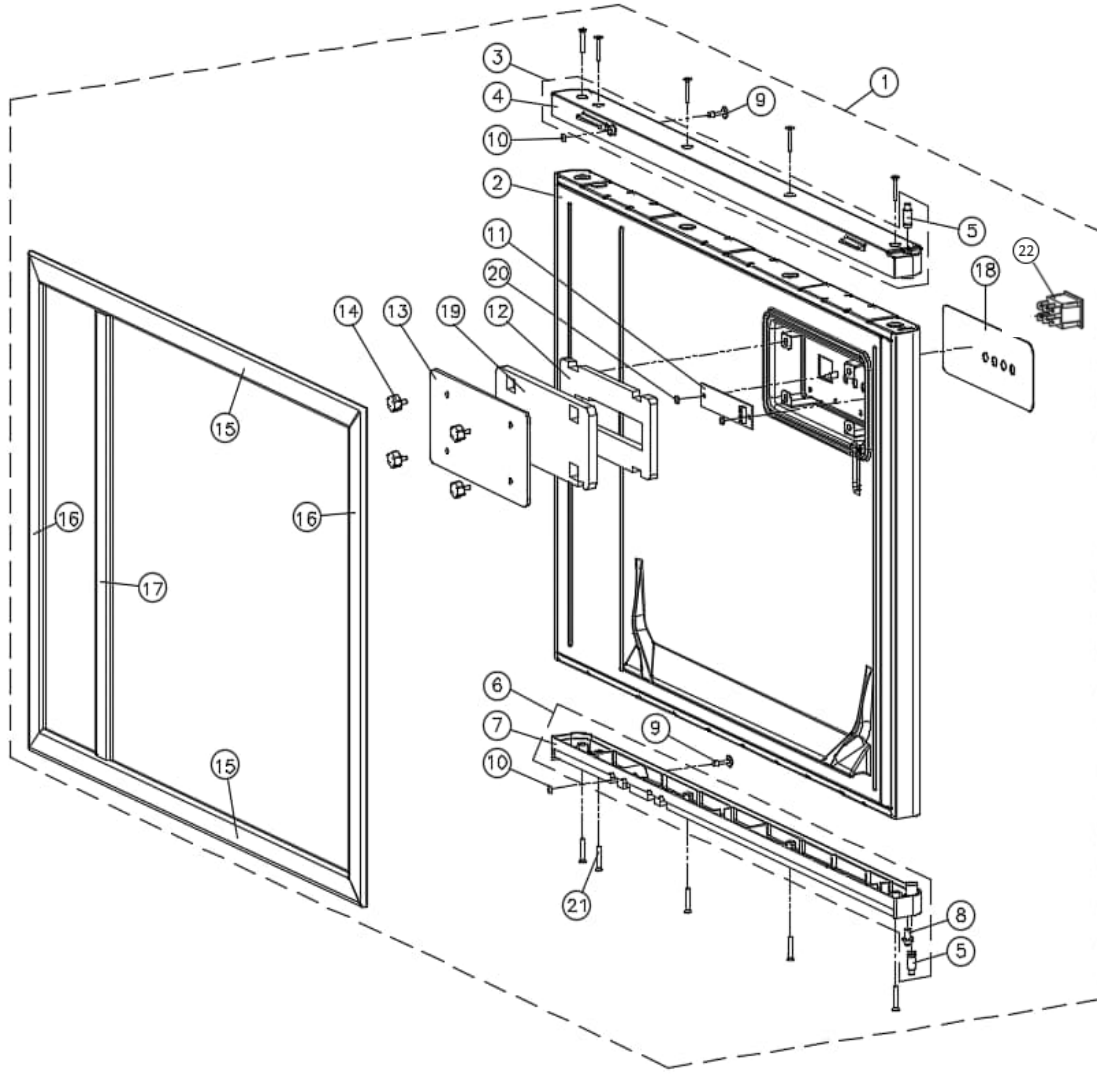
[ OUT CASE ASSY ]



NO	ITEMS	CODE	EXW USD	Q'TY
1	FRONT PANEL TOTAL ASS'Y	422002470		1
2	TOP COVER(AIR)	317194400		1
3	LEFT SIDE PANEL ASS'Y	420048100		1
4	LEFT SIDE W-PANEL	349096500		1
5	SIDE PANEL B-ENDCAP(L)	348010200		1
6	RIGHT SIDE PANEL ASS'Y	420048220		1
7	RIGHT SIDE W-PANEL	349096720		1
8	SIDE PANEL B-ENDCAP(R)	348010300		1
9	EVAP TOP COVER ASSY	427059100		1
10	HAND SCREW	210804501		2
11	FILTER CONDENSER(W417 x H512)	640008500		1
12	AIR PROTECTOR (NEW)	339015400		1
13	CAP SILICON	319011120		2
14				
15				
16				
17				
18				
19				
20				
21				
22				
23				
24				
25				
26				
27				
28				
29				
30				
31				
32				
33				
34				
35				

# IM-0350,0460,0550,0750

[ FRONT PANEL ASSY ]

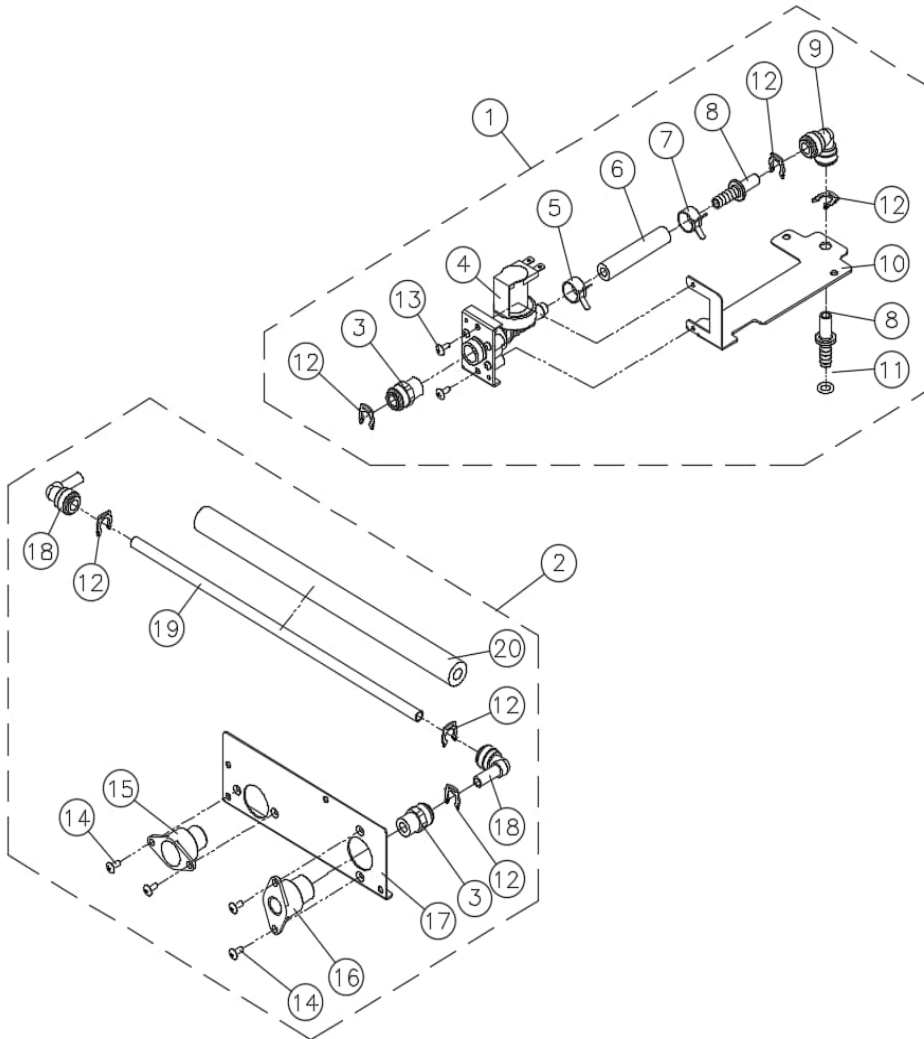


NO	ITEMS	CODE	EXW USD	Q'TY
1	FRONT PANEL ASS'Y NO SWITCH	422002470		1
	FRONT PANEL ASS'Y W/SWITCH	422002420		1
2	FRONT PANEL FOAM ASS'Y	422002350		1
3	FRONT TOP CAP ASSY(FOR M5)	432034910		1
4	(+) FRONT TOP CAP(FOR M5)	341012602		1
5	PIN ASSY	314045500		2
6	FRONT BOTTOM CAP ASSY	432035010		1
7	(+) FRONT BOTTOM CAP	341012702		1
8	SHAFT HINGE	321005000		1
9	COVER SCREW	210818600		2
10	O-RING(AN105)	303036600		2
11	DISPLAY PCB	367013000		1
12	INSULATION-DISPLAY	306041901		1
13	DISPLAY REAR-COVER	317197500		1
14	(+) HAND SCREW	210804502		4
15	F-PANEL GASKET(TOP/LOW)	656004500		2
16	F-PANEL GASKET(L/R)	656004510		2
17	F-PANEL GASKET(IN)	656004600		1
18	FRONT DISPLAY	440033820		1
19	INSULATION-DISPLAY(COVER)	306043700		1
20	NUT HEX	215000600		2
21	MACHINE SCREW(FLAT HEAD)	MFCX0832R		10
22	ON/OFF/ICE SWITCH	215000600		1
23				
24				
25				
26				
27				
28				
29				
30				
31				
32				
33				
34				
35				



# IM-0750-AC\_AH

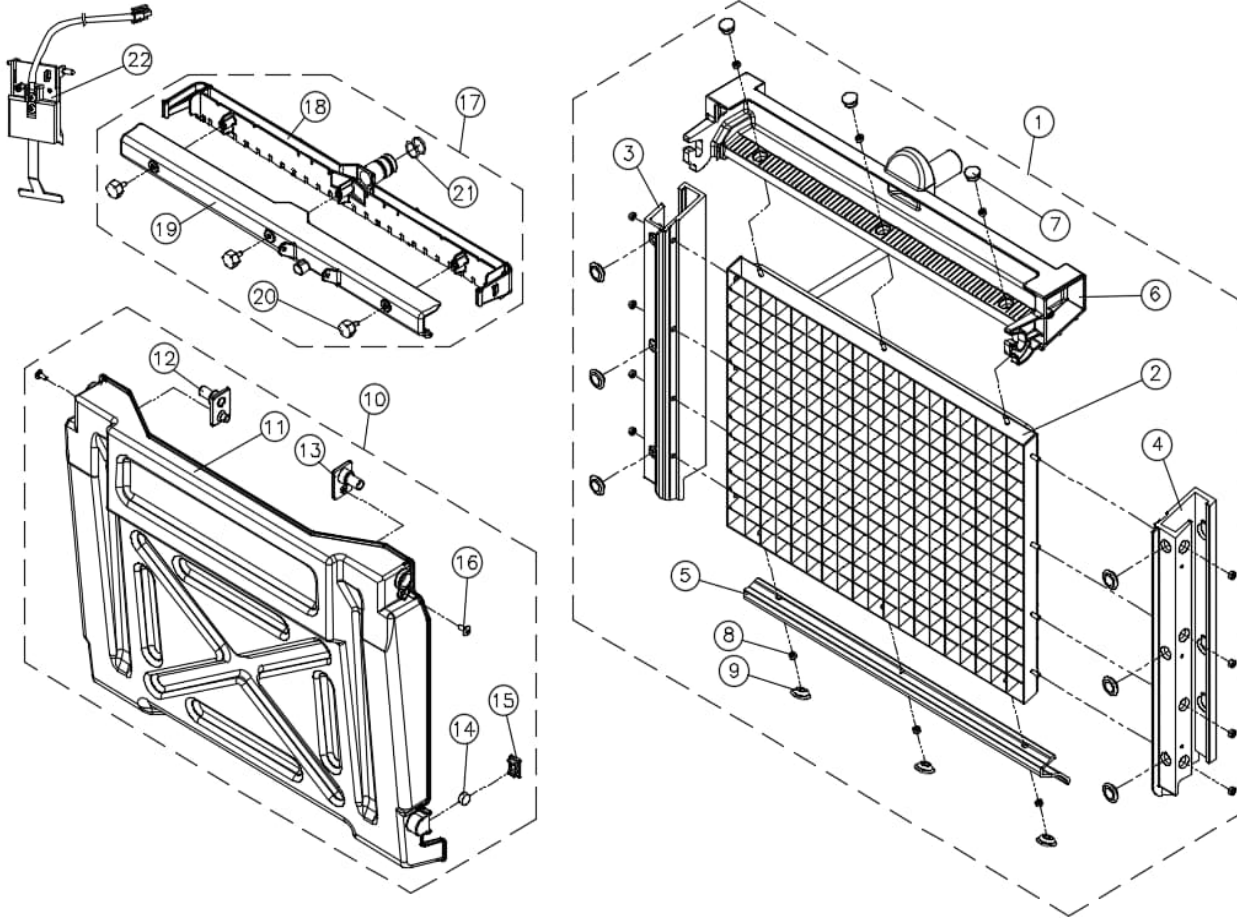
[ WATER IN/OUT ASSY ]



NO	ITEMS	CODE	EXW USD	Q'TY
1	WATER INLET VALVE ASSY	469003010		1
2	WATER INLET HOSE ASSY	469002810		1
3	STRAIGHT ADAPTOR(NPTF 3/8-3/8)	398016500		2
4	WATER INLET VALVE	340027520		1
5	BAND SPRING 17	203003200		1
6	BRAIDED SILICONE HOSE	229027800		0.08
7	BAND SPRING 17	203003200		1
8	TUBE TO HOSE STEM	398014200		2
9	EQUAL ELBOW	398012000		1
10	WATER INLET FIX BRACKET	301173610		1
11	O-RING(AN110)	303036400		1
12	LOCKING CLIP(3/8)	224002000		6
13	MACHINE SCREW(M4x8)	MTCX0816R		2
14	MACHINE SCREW(M4x8)	MTCX0816R		4
15	SOCKET(NPT3/4 - $\phi$ 20)	215013400		1
16	SOCKET(NPT3/8 - 3/8)	215018700		1
17	WATER IN-OUT BRACKET	301171010		1
18	STEM ELBOW	398013801		2
19	PE TUBE (OD 3/8)	229013500		0.35
20	PIPE INSULATION(ID 10, t5)	306009000		0.35
21				
22				
23				
24				
25				
26				
27				
28				
29				
30				
31				
32				
33				
34				
35				

# IM-0460,0550,0750

## [ EVAPORATOR PLATING ASSY ]

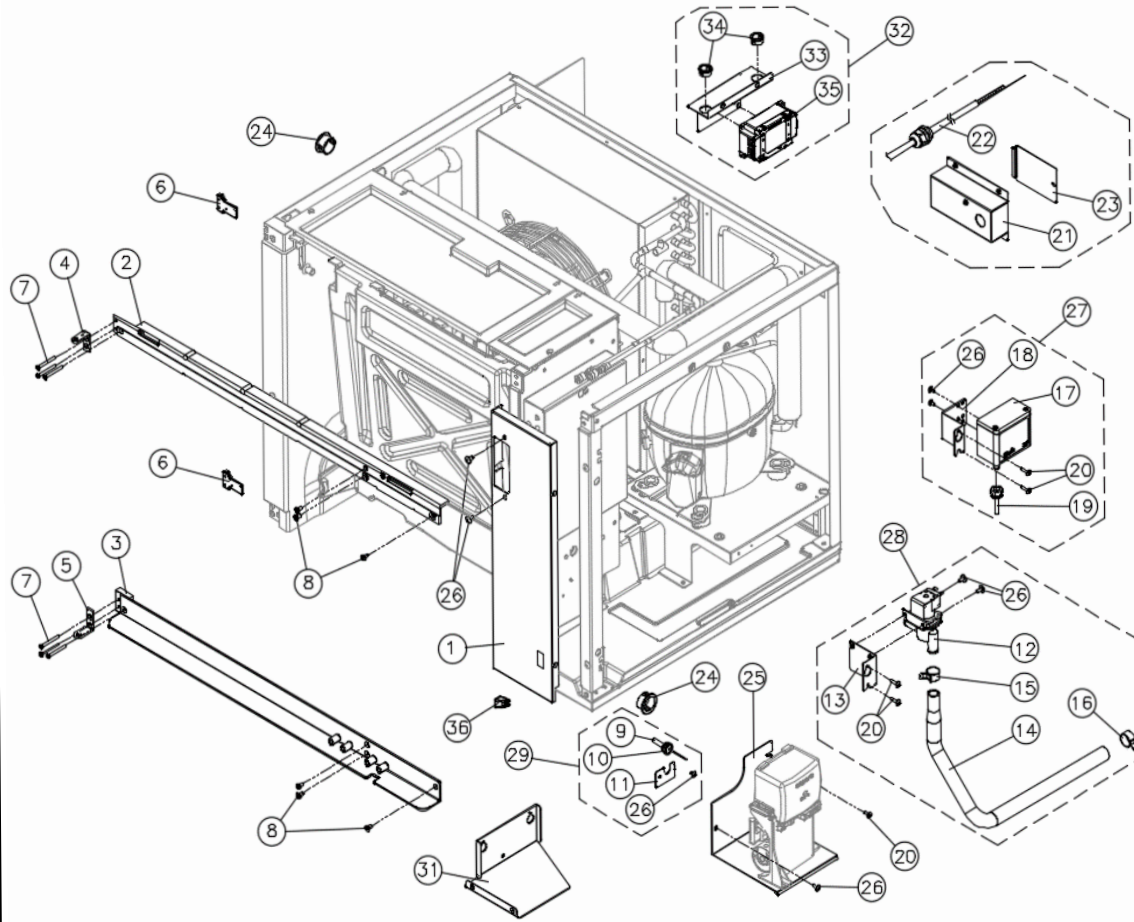


NO	ITEMS	CODE	EXW USD	Q'TY
1	EVAPORATOR T-ASSY (DICE)	409040600		1
	EVAPORATOR T-ASSY (H-DICE)	409040610		1
2	EVA PLATING ASS'Y(DICE)	409040500		1
	EVA PLATING ASS'Y(H-DICE)	409040510		1
3	EVA FRAME-L	348009800		1
4	EVA FRAME-R	348009900		1
5	EVA BOTTOM FRAME	348020920		1
6	EVA. TOP FRAME	339014300		1
7	EVA. TOP FRAME-CAP	339014601		3
8	FLANGE NUT HEX(M4)	215018304		14
9	CAP SILICON	319004200		9
10	WATER CURTAIN ASS'Y	482002300		1
11	WATER CURTAIN	635002301		1
12	HANGER-L	339014201		1
13	HANGER-R	339014211		1
14	MAGNET(Φ15xt5)	322005900		1
15	CURTAIN MAGNET-CAP	635002400		1
16	TAPPING SCREW(TRUSS HEAD)	TTCQ0820R		2
17	WATER DISTRIBUTOR ASS'Y	466004001		1
18	WATER DISTRIBUTOR-BODY	339014401		1
19	WATER DISTRIBUTOR-COVER	339014501		1
20	(+) HAND SCREW	210804502		3
21	O-RING(AN16)	303036300		2
22	ICE THICKNESS PROBE ASS'Y	701003100		1
23				
24				
25				
26				
27				
28				
29				
30				
31				
32				
33				



# IM-0750-AC\_AH

[FRAME & ACC. PARTS]

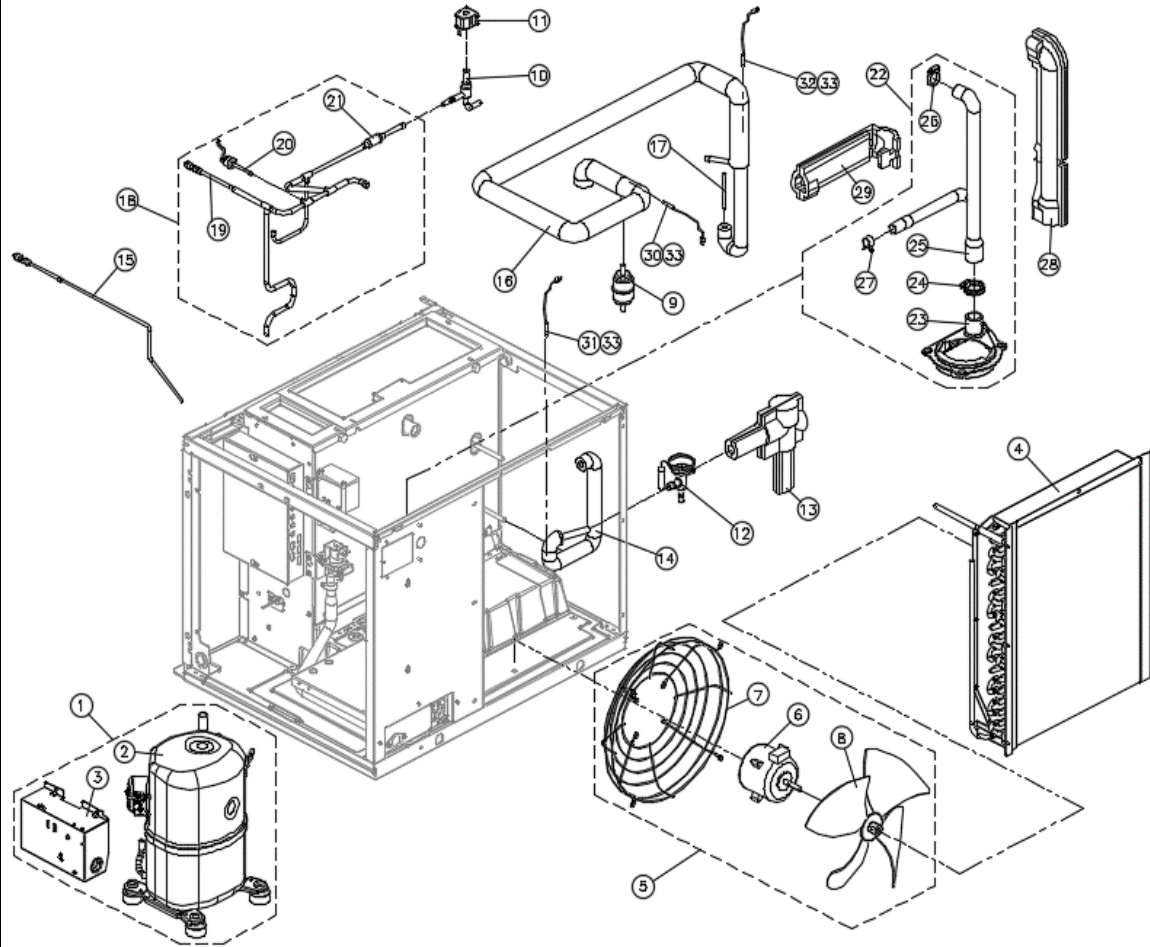


NO	ITEMS	CODE	EXW USD	Q'TY
1	CONTROL BOX FRONT COVER	317225520		1
2	FRONT TOP SUPPORT	341012402		1
3	FRONT DOWN SUPPORT	341012502		1
4	HINGE BRACKET	321005120		1
5	HINGE BRACKET DOWN	321005220		1
6	HINGE SUPPORT	341012300		2
7	TAPPING SCREW(FLAT M4x40)	TFCQ0841R		6
8	MACHINE SCREW(FLAT M5x12)	MFCX1022R		6
9	ASSY SENSOR MAGNET	701002000		1
10	SENSOR CAP	319009300		1
11	COVER BRACKET (M-SENSOR)	301169400		1
12	WATER VALVE(AC220V)	340025800		1
13	BRACKET DRAIN VALVE (DELTROL)	301169600		1
14	DRAIN VALVE TO DRAIN-DELTROL (PVC)	229032100		1
15	BAND SPRING 20	203004200		1
16	BAND SPRING 21	203003300		1
17	PRESSURE SWITCH(AUTO RESET)	355012700		1
18	BRACKET D-VALVE & P-SWITCH	301169700		1
19	ADJ ADAPTOR (PRESSURE PART)	429010100		1
20	TAPPING SCREW(TRUSS M4x16)	TTCQ0826R		4
21	JUNCTION BOX	374143800		1
22	POWER CORD ASSY	722017100		1
23	JUNCTION BOX COVER	317197900		1
24	GROMMET BUSHING	232003500		2
25	CAPACITOR BOX(TECUMSEH)	374144001		1
26	MACHINE SCREW(TRUSS HEAD)	MTCX0816R		5
27	PRESSURE SWITCH ASSY	#17~20,26		1
28	DRAIN VALVE ASSY	#12~16,20,26		1
29	MAGNET SENSOR PARTS	701003300		1
30	MACHINE SCREW(FLAT M5x15)	MFCX1025R		2
31	CONTROL BOX SUPPORT	301221400		1
32	NOISE FILTER ASSY	#33~35		1
33	NOISE FILTER BRACKET	301171111		1
34	GROMMET BUSHING	232003600		2
35	NOISE FILTER	500000900		1
36	ROCKER SWITCH(RL3-10-23~)	355025100		1



# IM-0750-AC\_AH

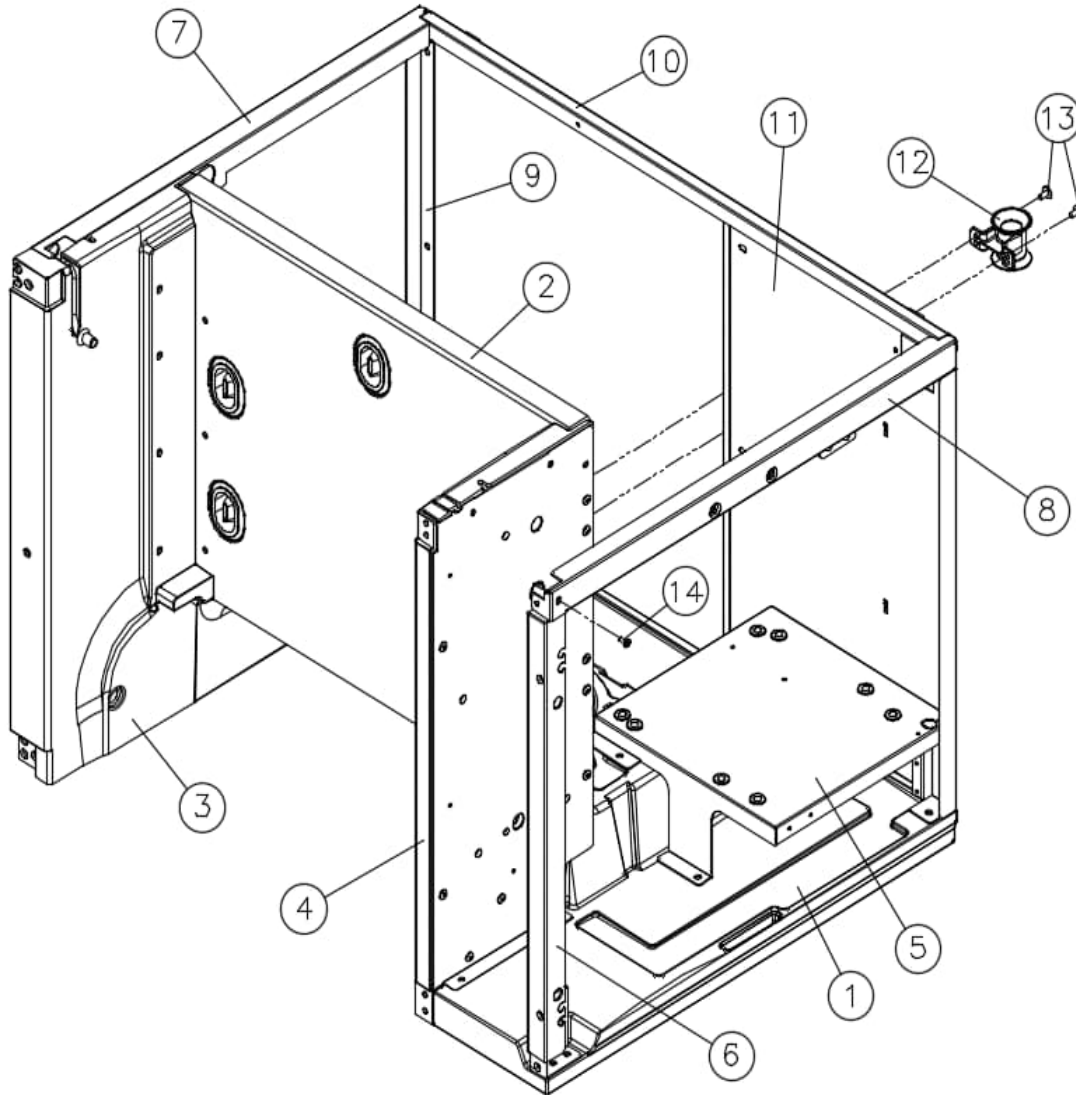
## [ REFRIGERATION PARTS ]



NO	ITEMS	CODE	EXW USD	Q'TY
1	COMP PARTS	#1,#2		1
2	COMP/AWS4520ZXN	394022800		1
3	ASSY CSR BOX (AWS4520ZXN)	426070700		1
4	CONDENSER ASY	411032300		1
5	FAN MOTOR ASS'Y(220V60Hz)	406023200		1
6	FAN MOTOR(DAI-95254SECC)	353015901		1
7	FAN NET(Φ340)	308001200		1
8	FAN(Φ300,4LIP)	308001800		1
9	FILTER DRYER	372001300		1
10	SOLENOID VALVE BODY	340028200		1
11	ASSY SOLENOID VALVE COIL(220V)	429007000		1
12	EXPANSION VALVE (FLARE)	340004500		1
	EXPANSION VALVE (BRAZE)	340009000		1
13	FOAM PE (EXPANSION)	306016700		1
14	EXPANSION VALVE TO EVAP	325141200		1
15	EXTENSION CHARGE NIPPLE	325147900		1
16	HEAT EXCHANGE PIPE	325147800		1
17	-	-		-
18	DISCHARGE PIPE (AWS4520ZXN)	325147701		1
19	CHARGE NIPPLE ASSY-100	459000400		1
20	ASSY HIGH PRESSURE S/W	429003900		1
21	STRAINER	605001900		1
22	WATER PUMP MOUNT ASSY	463000310		1
23	WATER PUMP MOUNT	339013500		1
24	HOSE CLAMP	203001400		1
25	PUMP TO DISTRIBUTOR	229032000		1
26	HOSE CLAMP	229026600		1
27	BAND SPRING	203003300		1
28	FOAM PUMP TO DISTRIBUTOR	306042000		1
29	FOAM PUMP TO DRAIN	306042100		1
30	EVA SENSOR SB(BLACK)	655008200		1
31	EVA SENSOR SB(BLUE)	655008210		1
32	EVA SENSOR SB(YELLOW)	655008220		1
33	SENSOR CLIP	224002400		3

# IM-0750-AC\_AH

[ REFRIGERATION CIRCUIT ASSY ]



NO	ITEMS	CODE	EXW USD	Q'TY
1	BASE PLATE FOAM ASSY	483022200		1
2	EVA. BACK PANEL ASS'Y	422002200		1
3	EVA S-PANEL ASS'Y(L)	420047100		1
4	EVA S-PANEL ASS'Y(R)	420047200		1
5	SUPPORT COMP.(0750)	320593620		1
6	FRONT SIDE FRAME(R)	348010510		1
7	SIDE TOP FRAME(L)	348010700		1
8	SIDE TOP FRAME(R)	348011800		1
9	SIDE REAR FRAME(L)	348010600		1
10	REAR TOP FRAME	348010900		1
11	BACK PANEL	349097010		1
12	WATER LEVEL PROBE-HOLDER	339014100		1
13	MACHINE SCREW(TRUSS HEAD)	MTCX0816R		2
14	MACHINE SCREW(FLAT HEAD)	MFCX0820R		1
15				
16				
17				
18				
19				
20				
21				
22				
23				
24				
25				
26				
27				
28				
29				
30				
31				
32				
33				
34				
35				