

V SERIES

Parts Catalog



V30, V40, & V60

Valid from machine number:

V30: 30007634

V40: 40008430

V60: 60007226



Varimixer USA
2215 East River Road Moraine, Ohio 45439

P: (800) 222-1138
varimixerusa.com

DRN: 20030-1336

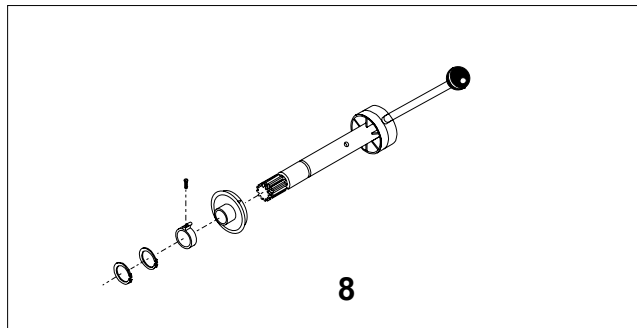
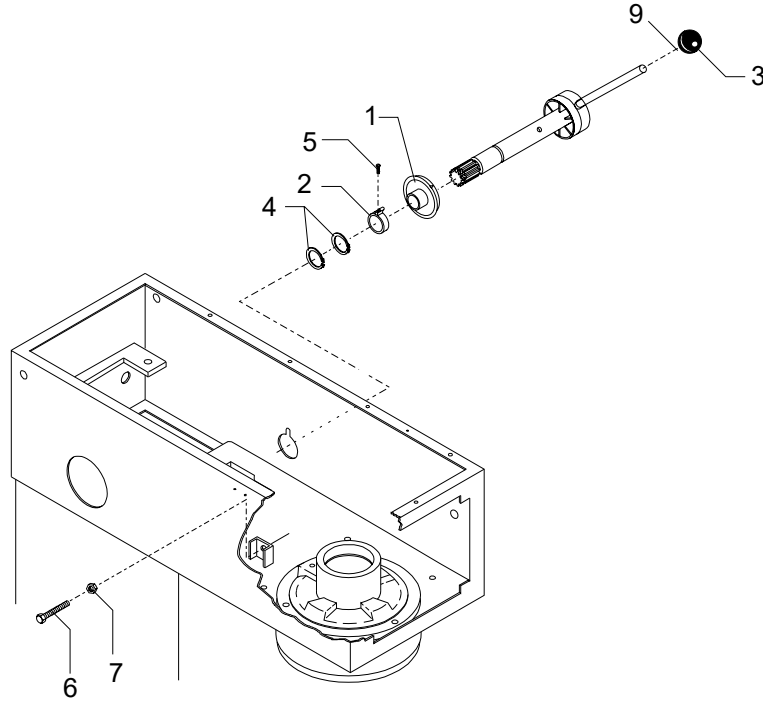
REV. -
1/1/2024

TABLE OF CONTENTS

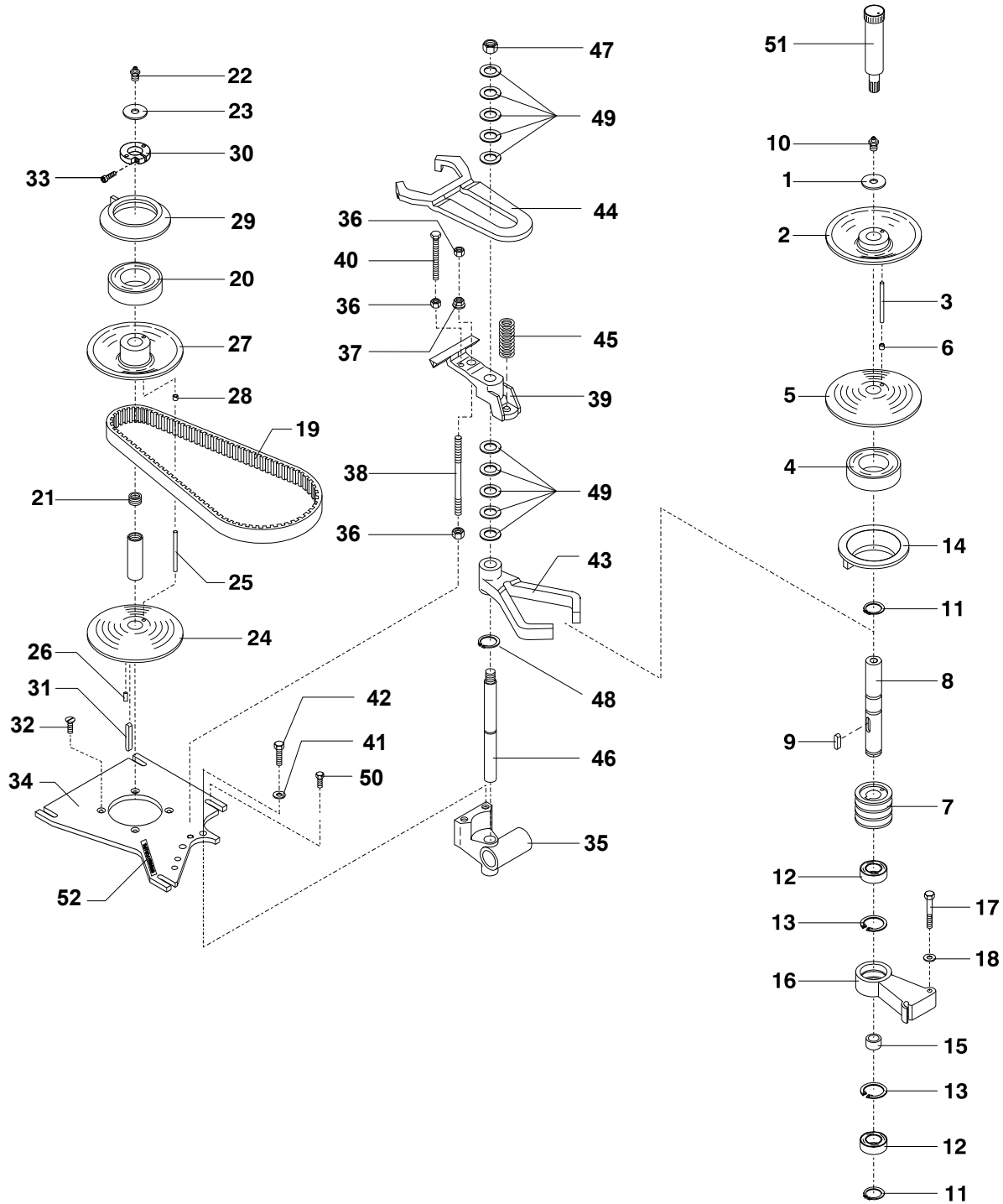
| | |
|---|----|
| SPEED LEVER COMPONENTS..... | 2 |
| TRANSMISSION COMPONENTS..... | 3 |
| PLANETARY HEAD COMPONENTS..... | 5 |
| MACHINE COLUMN COMPONENTS..... | 7 |
| BOWL GUARD COMPONENTS | 9 |
| LIFT SYSTEM COMPONENTS..... | 10 |
| ATTACHMENT DRIVE COMPONENTS | 12 |
| MICROSWITCH COMPONENTS..... | 14 |
| CONTROL BOX COMPONENTS..... | 15 |
| CONTROL PANEL COMPONENTS..... | 16 |
| ACCESSORIES & ACCESSORY COMPONENTS..... | 17 |
| WIRING DIAGRAM..... | 18 |

SPEED LEVER COMPONENTS

| Item # | Description | Part Number | |
|--------|----------------------|-----------------|------------|
| | | V30 & V40 | V60 |
| 1..... | Speed Indicator..... | AR30-47.10..... | AR30-47.10 |
| 2..... | Clamp W/ Screw..... | AR30-47.11..... | AR30-47.11 |
| 3..... | Knob..... | STA3306..... | STA3306 |
| 4..... | Retaining Ring..... | STA3414..... | STA3414 |
| 5..... | Screw..... | STA5247..... | STA5247 |
| 6..... | Screw..... | STA5439..... | STA5439 |
| 7..... | Nut..... | STA5810..... | STA5810 |
| 8..... | Speed Lever Kit..... | AR31-47Z..... | AR61-47Z |
| 9..... | Shim..... | STA3304..... | STA3304 |



TRANSMISSION COMPONENTS

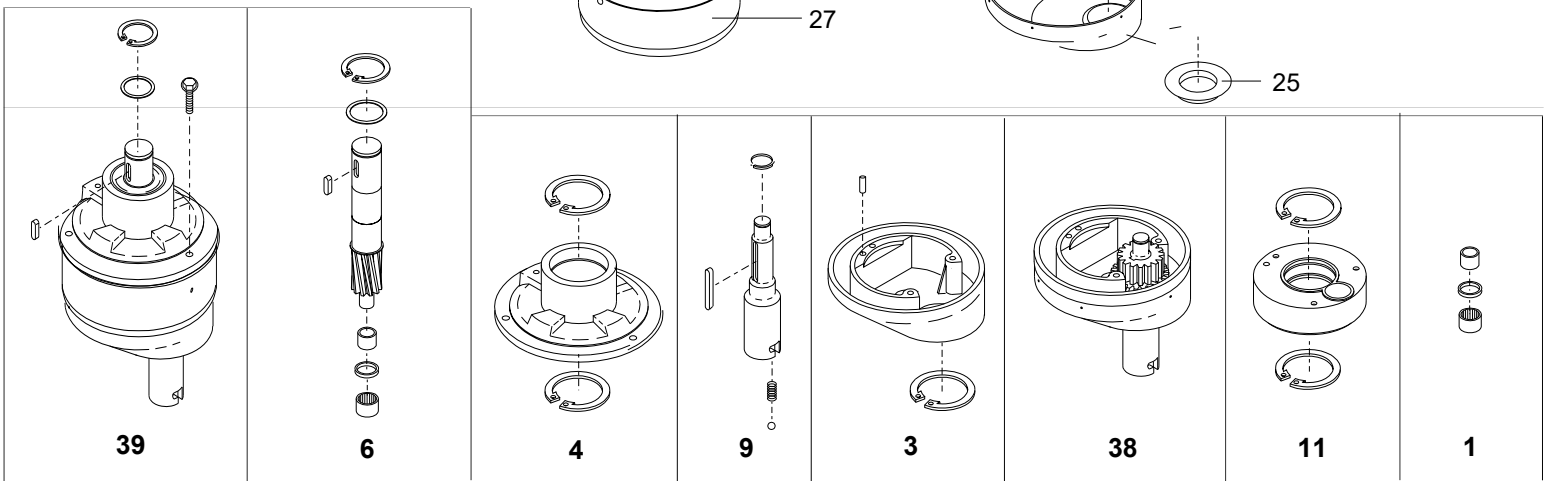
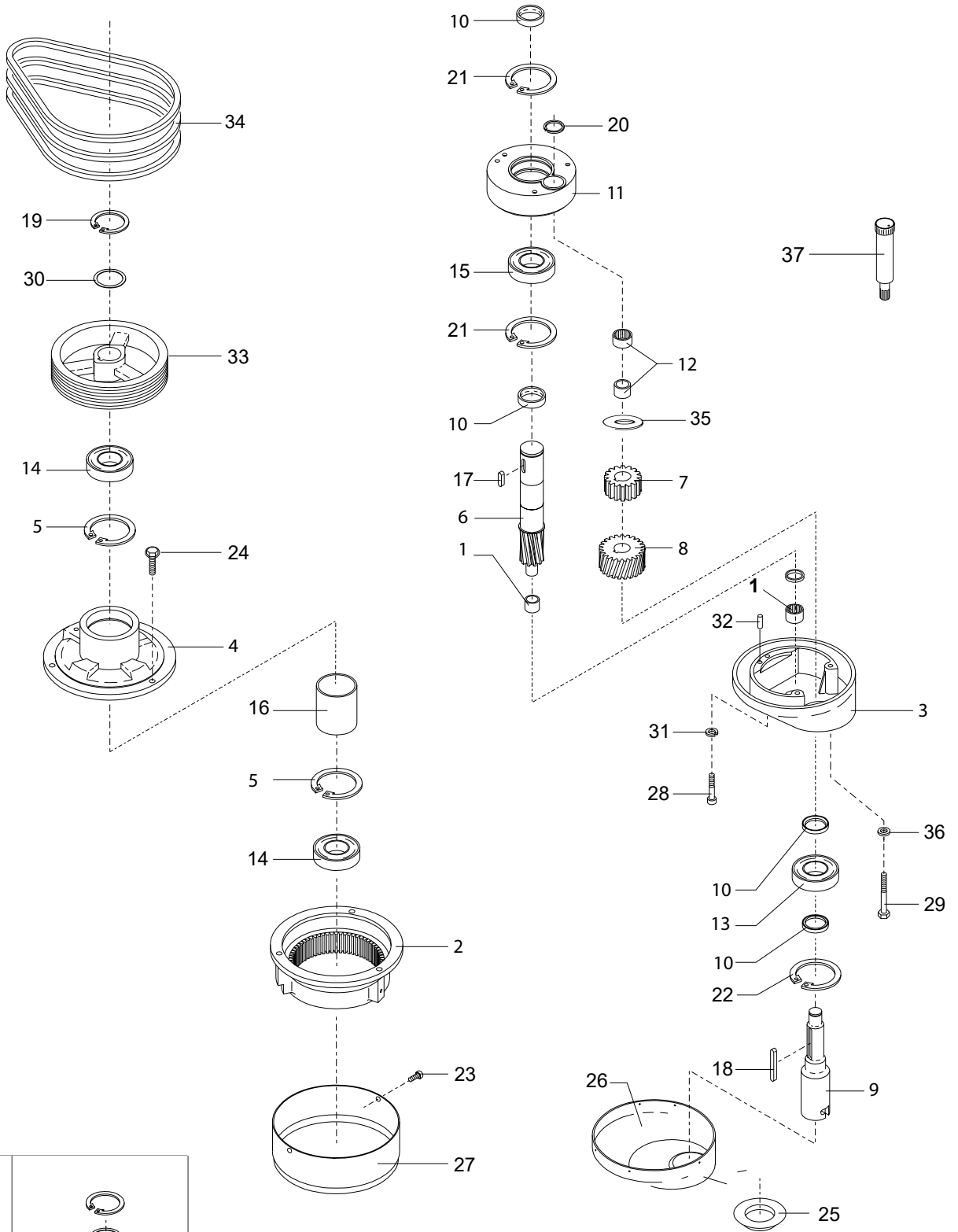


| | | | | | | | |
|-----------|--------------|-----------|----------|--------------|-----------|-----------|-----------|
| | | | | | | | |
| 53 | 8, 55 | 24 | 2 | 5, 28 | 30 | 35 | 46 |

TRANSMISSION COMPONENTS

| Item # | Description | Part Number | |
|---------|---|----------------|-----------|
| | | V30 & V40 | V60 |
| 1..... | Washer..... | STA6018..... | STA6018 |
| 2..... | Upper Sliding Pulley Assembly..... | R15-13.1..... | R60-13.1 |
| 3..... | Pin..... | R30-285..... | R60-285 |
| 4..... | Bearing..... | R15-103..... | R15-103 |
| 5..... | Sliding Pulley Assembly..... | R15-15Z..... | R60-15Z |
| 6..... | Bushing..... | STA2505..... | STA2505 |
| 7..... | Pulley..... | R27-128..... | R60-128 |
| 8..... | Bearing Shaft Kit.....(MUST ORDER)..... | R27-6M..... | R60-6M |
| 9..... | Key..... | STA2024..... | STA2024 |
| 10..... | Grease Fitting..... | STA3220..... | STA3220 |
| 11..... | Retaining Ring..... | STA3410..... | STA3410 |
| 12..... | Bearing..... | R27-102..... | R27-102 |
| 13..... | Retaining Ring..... | STA3514..... | STA3514 |
| 14..... | Vari Speed Collar..... | R15-17.1..... | R15-17.1 |
| 15..... | Bushing..... | R15-143..... | R15-143 |
| 16..... | Pulley Arm..... | R30-6M5..... | R30-6M5 |
| 17..... | Screw..... | STA5348..... | STA5348 |
| 18..... | Washer..... | STA6033..... | STA6033 |
| 19..... | V Belt..... | R27-91..... | R60-91 |
| 20..... | Bearing..... | R15-103..... | R15-103 |
| 21..... | Threaded Fitting..... | R15-156..... | R15-156 |
| 22..... | Grease Fitting..... | STA3220..... | STA3220 |
| 23..... | Washer..... | STA6018..... | STA6018 |
| 24..... | Lower Pulley.....(MUST ORDER)..... | R15-13.1Z..... | R60-13.1Z |
| 25..... | Pin..... | R30-285..... | R60-285 |
| 26..... | Set Screw..... | STA5602..... | STA5602 |
| 27..... | Pulley.....(MUST ORDER)..... | R15-15Z..... | R60-15Z |
| 28..... | Bushing..... | STA2505..... | STA2505 |
| 29..... | Vari Speed Collar..... | R15-17.1..... | R15-17.1 |
| 30..... | Clamp Ring Kit..... | R27-227Z..... | R27-227Z |
| 31..... | Key..... | STA2011..... | STA2011 |
| 32..... | Screw..... | STA5018..... | STA5018 |
| 33..... | Screw..... | STA5612..... | STA5612 |
| 34..... | Motor Plate..... | R60-61.1E..... | R60-61.1E |
| 35..... | Bearing Bracket Kit..... | R15-18Z..... | R15-18Z |
| 36..... | Nut..... | STA5810..... | STA5810 |
| 37..... | Flange Nut..... | STA5895..... | STA5895 |
| 38..... | Threaded Rod..... | AR81-305..... | AR81-305 |
| 39..... | Belt Tightener Bracket..... | R20-26.1..... | R20-26.1 |
| 40..... | Screw..... | STA5446..... | STA5446 |
| 41..... | Washer..... | STA6010..... | STA6010 |
| 42..... | Screw..... | STA5345..... | STA5345 |
| 43..... | Lower Fork..... | R27-16..... | R27-16 |
| 44..... | Belt Tightener Fork..... | R20-19..... | R20-19 |
| 45..... | Spring..... | W40P-275..... | W40P-27 |
| 46..... | Toothed Rack Kit..... | R15-46Z..... | R15-46Z |
| 47..... | Nut..... | STA5815..... | STA5815 |
| 48..... | Retaining Ring..... | STA3408..... | STA3408 |
| 49..... | Washer..... | STA6040..... | STA6040 |
| 50..... | Screw..... | STA5066..... | STA5066 |
| 51..... | Pulley Grease Tube (14oz)..... | SM711..... | SM711 |
| 52..... | Greased For Life Label..... | R20-249..... | R20-249 |
| 53..... | Motor Pulley Assembly..... | R15-59.2Z..... | R60-59.1Z |
| 54..... | Lower Motor Pulley Assembly..... | R15-13.1Z..... | R60-13.1Z |
| 55..... | Vari Speed Pulley & Arm Assembly..... | R15-6M..... | R60-6M |

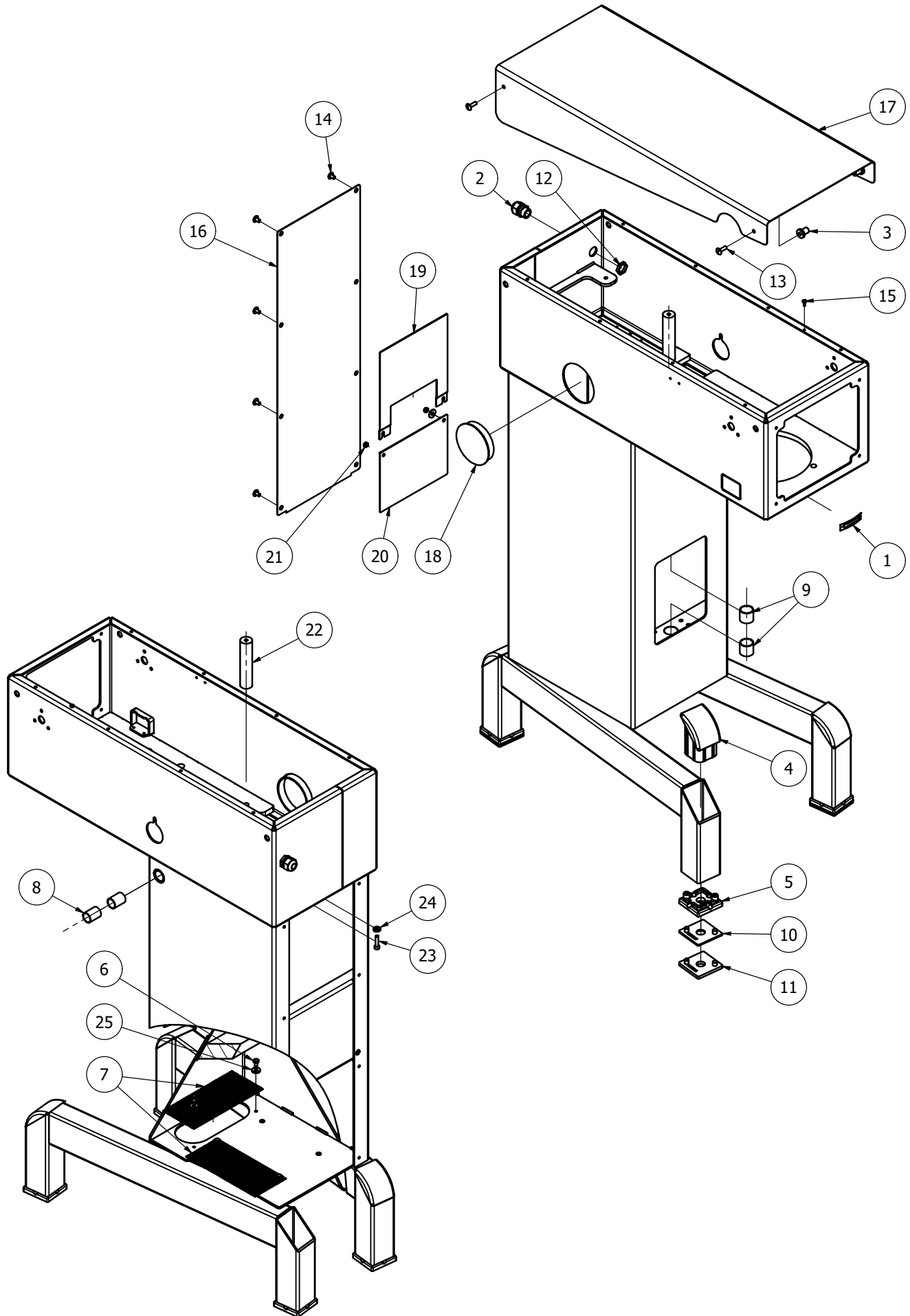
PLANETARY HEAD COMPONENTS



PLANETARY HEAD COMPONENTS

| Item # | Description | Part Number | | |
|--------|-----------------------------|---------------|---------------|---------------|
| | | V30 | V40 | V60 |
| 1 | Needle Bearing Kit | R30-101Z | R40-101Z | R40-101Z |
| 2 | Ring Gear | R30-1 | R40-1 | R60-1 |
| 3 | Eccentric Head Kit | R30-2Z | R40-2Z | R60-2Z |
| 4 | Bearing Housing Kit | R40-3Z | R40-3Z | R60-3Z |
| 5 | Retaining Ring | STA3526 | STA3526 | STA3526 |
| 6 | Main Shaft Kit | R30-30Z | R40-30Z | R60-30.1Z |
| 7 | Upper Pinion Gear | R30-31 | R40-31 | AR60-31 |
| 8 | Lower Pinion Gear | R30-32 | R40-32 | R60-32.1 |
| 9 | Bayonet Shaft Kit | R30-33.5Z | AR40-33.5Z | R60-33.5Z |
| 10 | Spacer | R40-34 | R40-34 | R60-37 |
| 11 | Eccentric Disc Kit | R30-36Z | R40-36Z | R60-36Z |
| 12 | Needle Bearing Kit | R30-96 | R40-96 | R60-96 |
| 13 | Bearing | R30-97 | R40-97 | R60-97 |
| 14 | Bearing | R30-98 | R40-98 | R60-98 |
| 15 | Bearing | R30-100 | R40-100 | R60-100 |
| 16 | Distance Tube | R40-141 | R40-141 | R60-141 |
| 17 | Key | STA2030 | STA2030 | STA2030 |
| 18 | Key | STA2038 | STA2040 | STA2034 |
| 19 | Snap Ring | STA3425 | STA3425 | STA3427 |
| 20 | Retaining Ring | STA3472 | STA3474 | STA3474 |
| 21 | Retaining Ring | STA3520 | STA3520 | STA3523 |
| 22 | Retaining Ring | STA3522 | N/A | STA3526 |
| 23 | Screw | STA5263 | STA5256 | STA5256 |
| 24 | Screw | STA5333 | STA5333 | STA5333 |
| 25 | Seal Ring | W40-209 | W40-209 | R60-209.1 |
| 26 | Metal Head Cap | W40-272 | W40-272 | W60-272 |
| 27 | Plastic Ring | AR30-162H | AR40-162H | AR60-162H |
| 28 | Screw | STA5645 | STA5645 | STA5646 |
| 29 | Screw | AR30-41 | AR40-41 | STA5652 |
| 30 | Washer | STA6043 | STA6043 | STA6047 |
| 31 | Lock Washer | STA6055 | STA6057 | STA6057 |
| 32 | Dowel Pin | STA6460 | STA6460 | STA6064 |
| 33 | Pulley | R40-129A | R40-129A | R60-129A |
| 34 | V Belt (3/SET) | R40-90.1Z | R40-90.1Z | R60-90.1Z |
| 35 | Washer | STA6046 | N/A | R60-235 |
| 36 | Washer | STA6029 | STA6029 | STA6029 |
| 37 | Grease Gun | R15-142-USPUL | R15-142-USPUL | R15-142-USPUL |
| 38 | Lower Planetary Assembly | W30-2.3Z | R40-2.21M | R60-2.4Z |
| 39 | Complete Planetary Assembly | W30-2.2M | W40-2.2M | W60-2.2M |

MACHINE COLUMN COMPONENTS

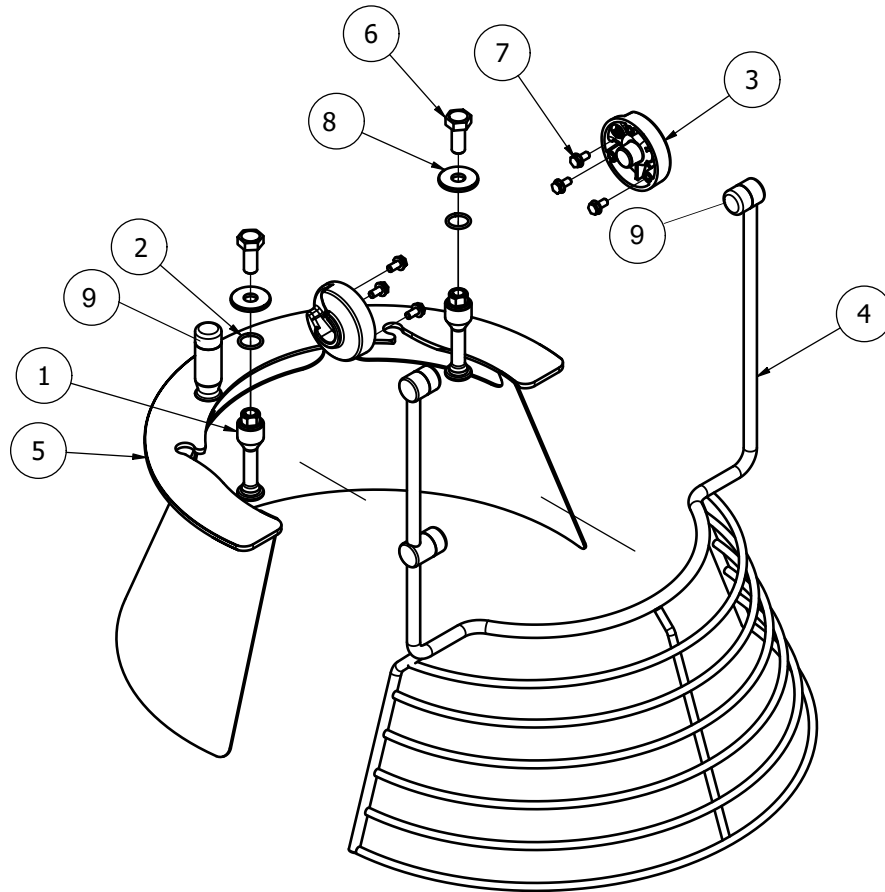


MACHINE COLUMN COMPONENTS

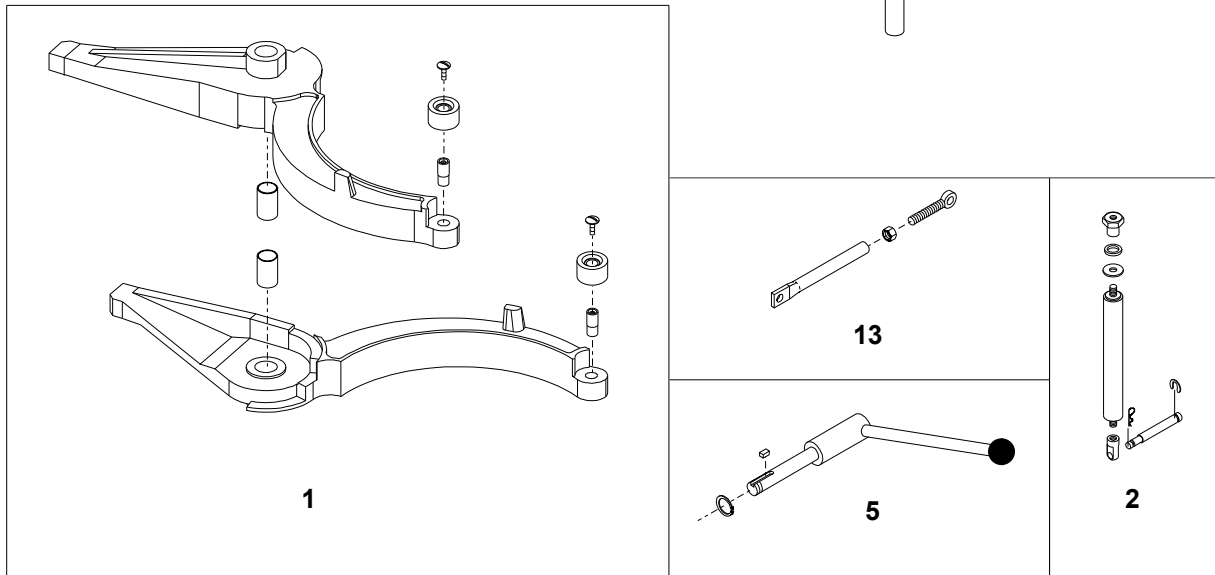
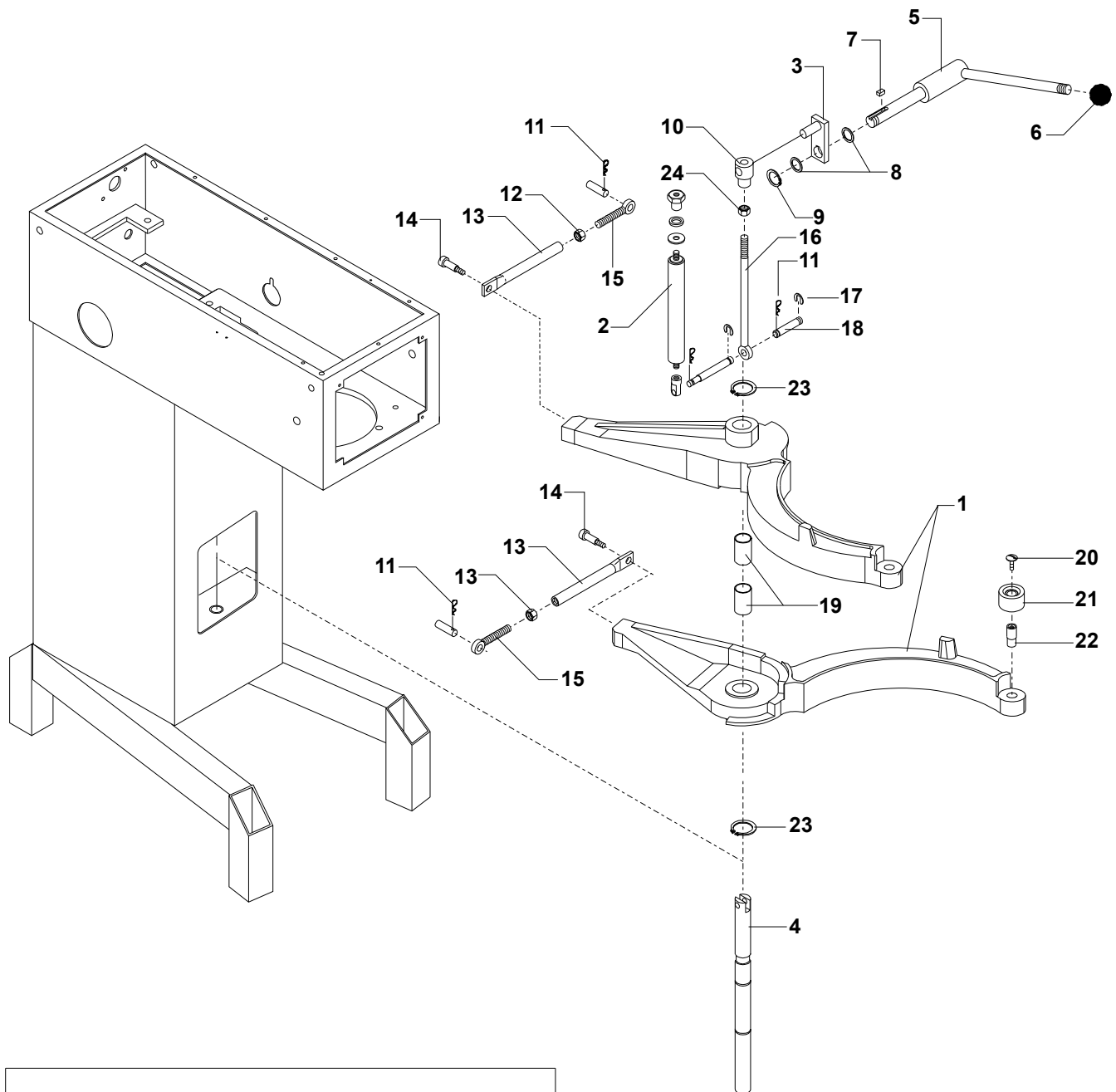
| Item # | Description | Part Number | |
|---------|-----------------------------|------------------|-------------|
| | | V30 & V40 | V60 |
| 1..... | Arrow Label..... | R15-245..... | R15-245 |
| 2..... | Strain Relief..... | STA3002..... | STA3002 |
| 3..... | Threaded Bushing..... | STA6580..... | STA6580 |
| 4..... | Knee Pad..... | AR30-212..... | AR60-212 |
| 5..... | Foot..... | AR30-213..... | AR60-213 |
| 6..... | Screw..... | STA5045..... | STA5045 |
| 7..... | Screen..... | AR31-22.180..... | AR31-22.180 |
| 8..... | Bushing..... | STA2515..... | STA2515 |
| 9..... | Bushing..... | STA2520..... | STA2520 |
| 10..... | Adjustment Plate (3MM)..... | AR30-214.3..... | AR60-214.3 |
| 11..... | Adjustment Plate (6MM)..... | AR30-214.6..... | AR60-214.6 |
| 12..... | Nut.....(MUST ORDER).... | STA3002..... | STA3002 |
| 13..... | Screw..... | STA5017..... | STA5017 |
| 14..... | Screw..... | STA5080..... | STA5080 |
| 15..... | Screw..... | STA5232..... | STA5232 |
| 16..... | Back Plate..... | AR31-22.17R..... | AR61-22.17R |
| 17..... | Top Cover..... | AR31P-21..... | AR61P-21 |
| 18..... | Plug..... | STA6510..... | STA6510 |
| 19..... | Upper Plate..... | AR31-270..... | AR61-270 |
| 20..... | Lower Plate..... | AR31-271M..... | AR61-271 |
| 21..... | Nut..... | STA5897..... | STA5897 |
| 22..... | Standoff..... | AR31-148E..... | AR61-148M4 |
| 23..... | Screw..... | STA5625..... | STA5625 |
| 24..... | Lock Washer..... | STA6056..... | STA6056 |
| 25..... | Washer..... | STA6165..... | STA6165 |

SAFETY GUARD COMPONENTS

| Item # | Description | Part Number | | |
|--------|------------------|--------------|--------------|--------------|
| | | V30 | V40 | V60 |
| 1 | Mounting Shaft | 56AR31-102.1 | 56AR31-102.1 | 56AR61-102.1 |
| 2 | O-ring | STA3143 | STA3143 | STA3143 |
| 3 | Shield Hinge | 56AR31-107M | 56AR31-107M | 56AR31-107M |
| 4 | Front Bowl Guard | 56AR31-21.1M | 56AR41-21.1M | 56AR61-21.1M |
| 5 | Rear Bowl Guard | 56AR31-22 | 56AR41-22 | 56AR61-22 |
| 6 | Bolt | STA5047 | STA5047 | STA5047 |
| 7 | Screw | STA5344 | STA5344 | STA5344 |
| 8 | Washer | STA6033 | STA6033 | STA6033 |
| 9 | Magnet Cap | 56AR31-104 | 56AR31-104 | 56AR31-104 |



LIFT SYSTEM COMPONENTS

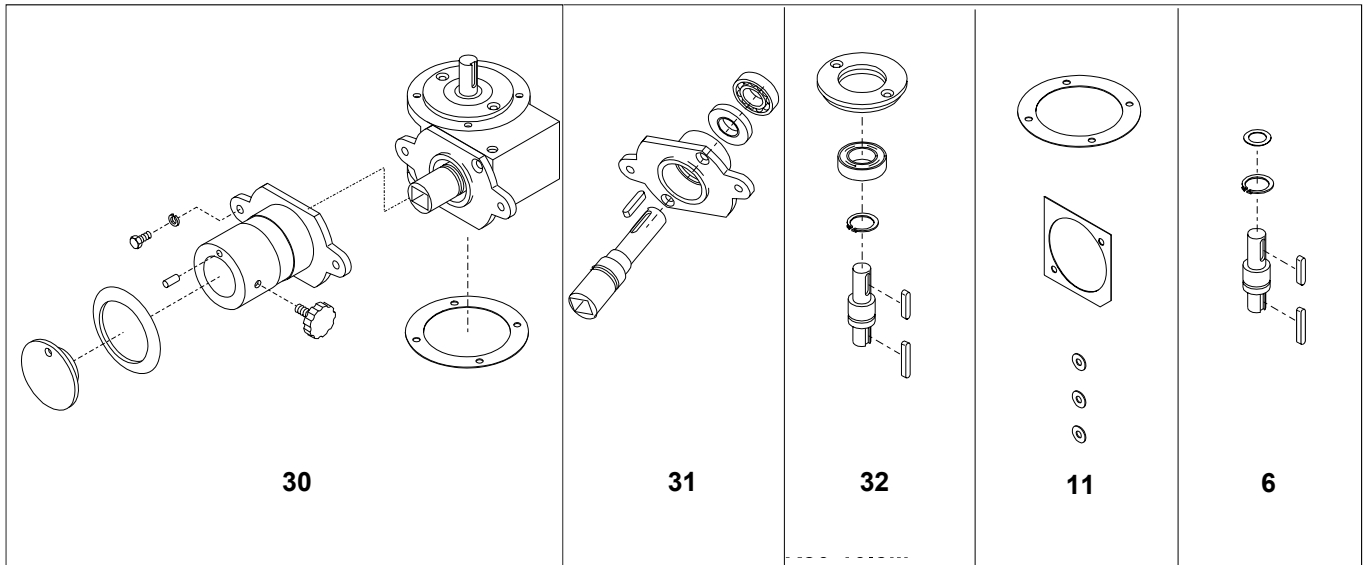
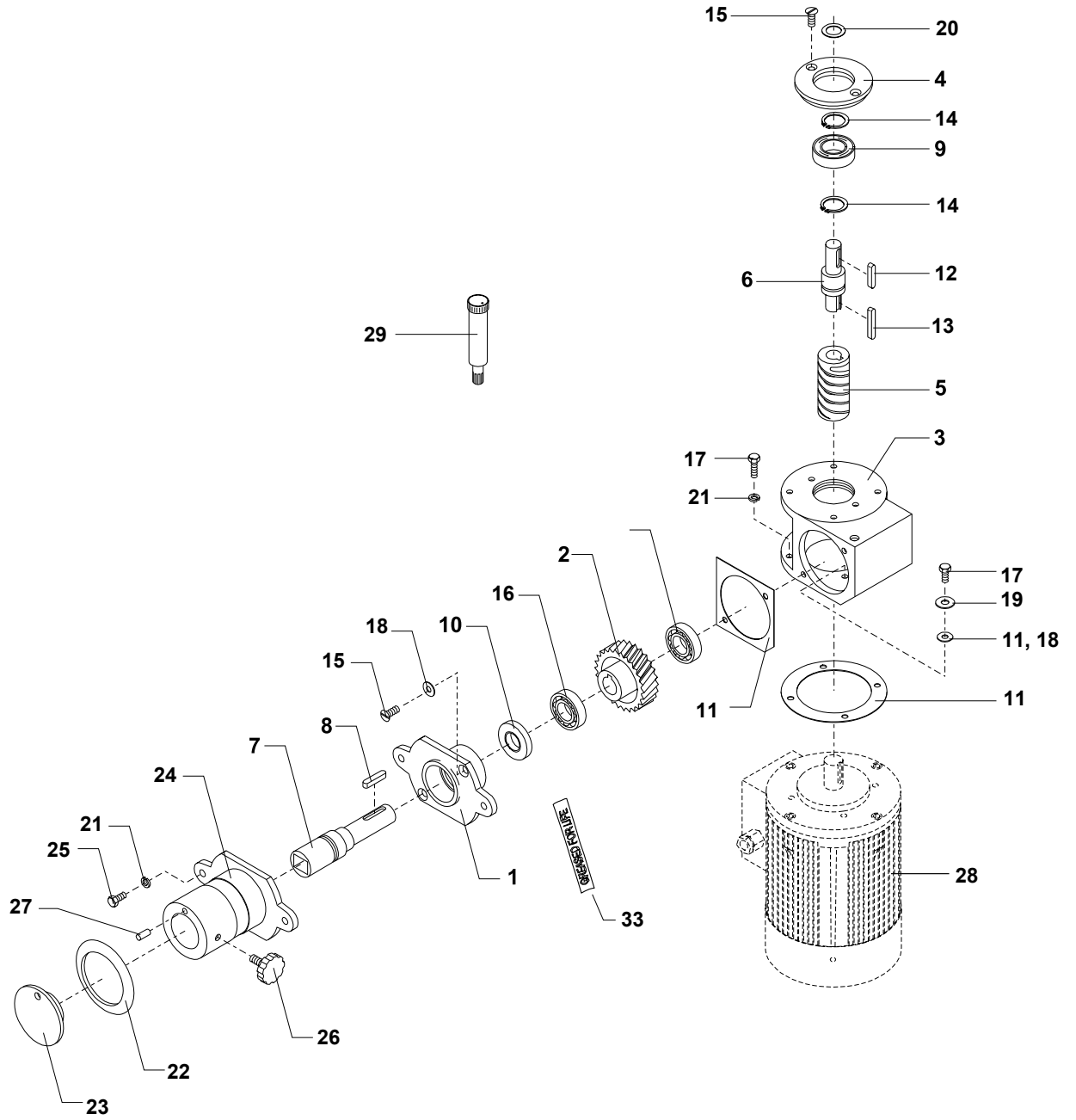


LIFT SYSTEM COMPONENTS

Part Number

| Item # | Description | Part Number | | |
|---------|-------------------------|---------------------|------------------|-------------|
| | | V30 | V40 | V60 |
| 1..... | Bowl Arm Kit..... | AR31-23/24.1M2..... | AR41-23/24Z..... | AR61-23/24Z |
| 2..... | Shock Absorber Kit..... | W40-600M..... | W40-600M..... | W60-600M |
| 3..... | Crank Arm..... | R27-63ME..... | R27-63ME..... | R60-63ME |
| 4..... | Bowl Arm Shaft Kit..... | AR31-68Z..... | AR31-68Z..... | AR61-68Z |
| 5..... | Lift Lever Kit..... | R27-62Z..... | R27-62Z..... | R60-62Z |
| 6..... | Knob..... | STA3308..... | STA3308..... | STA3308 |
| 7..... | Key..... | STA2020..... | STA2020..... | STA2020 |
| 8..... | Washer..... | STA6044..... | STA6044..... | STA6044 |
| 9..... | Retaining Ring..... | STA3408..... | STA3408..... | STA3408 |
| 10..... | Lift Nut..... | AR40-65M..... | AR40-65M..... | AR40-65M |
| 11..... | Cotter Pin..... | STA6205..... | STA6205..... | STA6205 |
| 12..... | Jam Nut..... | STA5827..... | STA5827..... | STA5827 |
| 13..... | Extension Rod Kit..... | R30-69Z..... | R30-69Z..... | R60-69Z |
| 14..... | Shoulder Bolt..... | STA5690..... | STA5690..... | STA5690 |
| 15..... | Eyebolt..... | R30-80E..... | R30-80E..... | R30-80E |
| 16..... | Lift Bolt Kit..... | R30-65Z..... | R30-65Z..... | R60-65Z |
| 17..... | Snap Ring..... | STA3580..... | STA3580..... | STA3580 |
| 18..... | Lift Bolt Pin..... | W40-603E..... | W40-603E..... | W40-603E |
| 19..... | Bushing..... | STA2522..... | STA2522..... | STA2522 |
| 20..... | Screw..... | STA5088..... | STA5088..... | STA5088 |
| 21..... | Bowl Arm Roller..... | AR31-128..... | AR31-128..... | AR31-128 |
| 22..... | Roller Shaft..... | AR31-127..... | AR31-127..... | AR31-127 |
| 23..... | Retaining Ring..... | STA3467..... | STA3467..... | STA3467 |
| 24..... | Nut..... | STA5827..... | STA5827..... | STA5827 |

ATTACHMENT DRIVE COMPONENTS

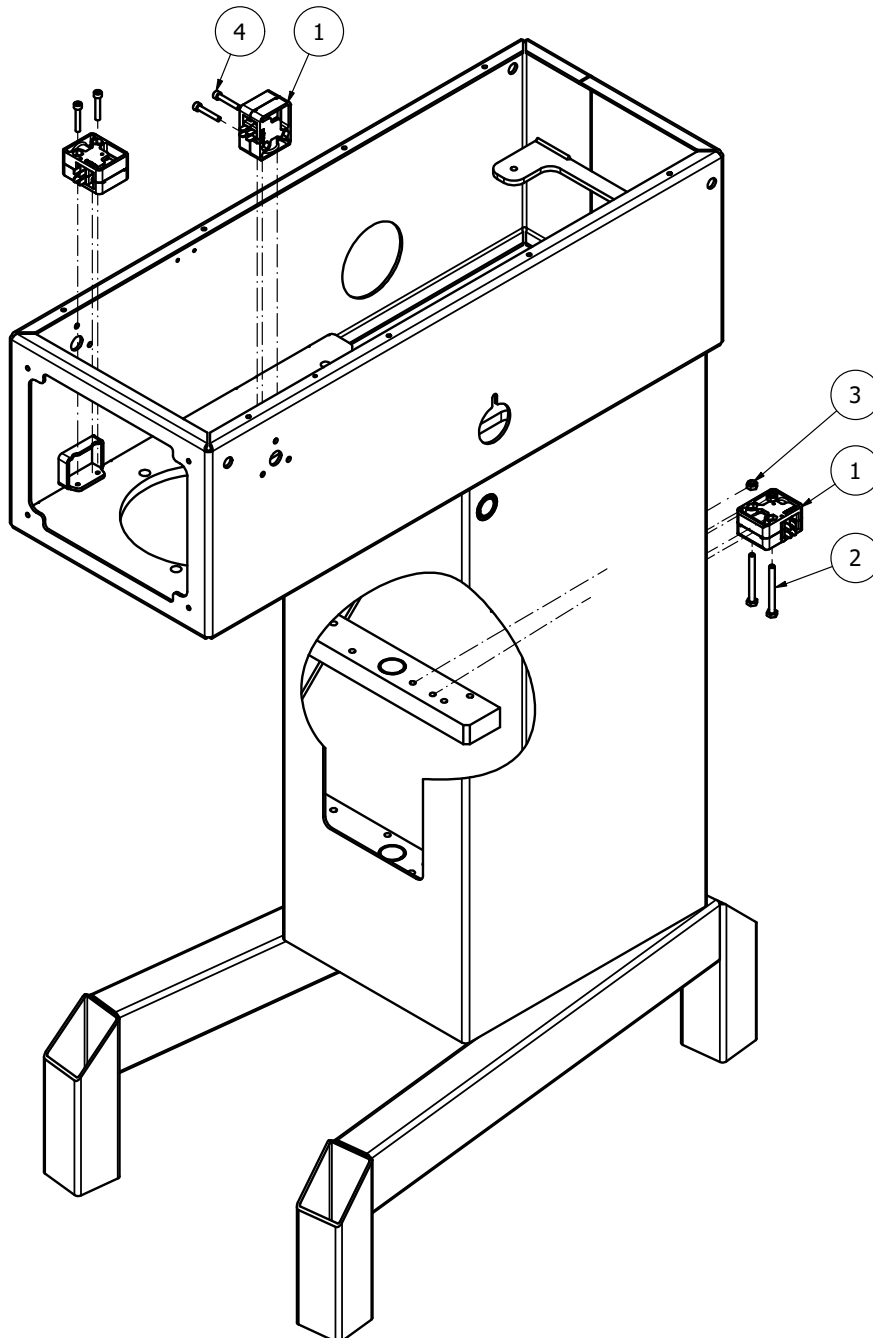


ATTACHMENT DRIVE COMPONENTS

| <u>Item #</u> | <u>Description</u> | <u>Part Number</u> |
|---------------|---------------------------------------|--------------------|
| 1..... | Hub Bracket..... | R15-5 |
| 2..... | Worm Wheel..... | R20-9 |
| 3..... | Gear Case..... | R15-10 |
| 4..... | Gear Case Cover..... | R15-11 |
| 5..... | Worm Gear..... | R20-49 |
| 6..... | Gear Shaft Kit..... | R20-52 |
| 7..... | #12 Drive Shaft..... | R15-50.6 |
| 8..... | Key..... | STA2032 |
| 9..... | Bearing..... | R27-102 |
| 10..... | Oil Seal..... | R20-107 |
| 11..... | Gasket Kit..... | R20-300Z |
| 12..... | Key..... | STA2007 |
| 13..... | Key..... | STA2011 |
| 14..... | Retaining Ring..... | STA3410 |
| 15..... | Screw..... | STA5018 |
| 16..... | Bearing..... | R15-105 |
| 17..... | Screw..... | STA5066 |
| 18..... | Washer..... | STA5908 |
| 19..... | Washer..... | STA6020 |
| 20..... | Washer..... | STA6054 |
| 21..... | Lock Washer..... | STA6056 |
| 22..... | Gasket Ring..... | R15-211 |
| 23..... | Hub Cover..... | R15-215.1 |
| 24..... | #12 Hub..... | R15-8.6M0 |
| 25..... | Screw..... | STA5322 |
| 26..... | Thumbscrew..... | 4R-125 |
| 27..... | Pin..... | STA6316 |
| 28..... | Motor (115V/60HZ/1PH) V30..... | W60-85.61 |
| 28..... | Motor (208V/60HZ/1PH) V40-1 & V60-1.. | W60-85.64 |
| 28..... | Motor (208V/60HZ/3PH) V40-3 & V60-3.. | W60-85.54 |
| 29..... | Hub Grease Tube (14oz)..... | SM715 |
| 30..... | Hub & Drive Gear Kit..... | 02030-0012 |
| 31..... | Hub Bracket & Shaft Kit..... | RN30-5.6M |
| 32..... | Shaft & Cover Kit..... | RN30-52M |
| 33..... | "Greased For Life" Label..... | R20-249 |

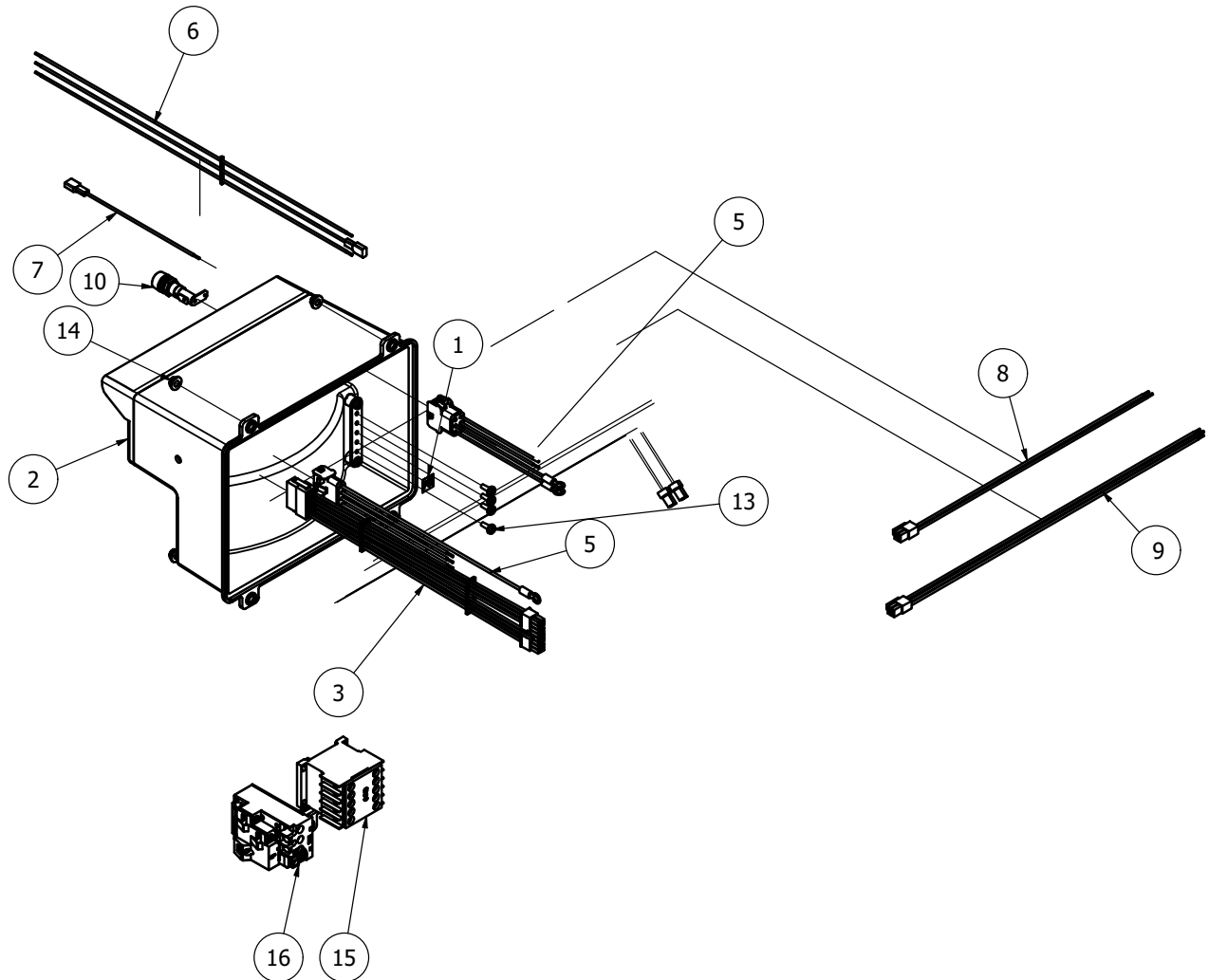
MICROSWITCH COMPONENTS

| Item # | Description | Part Number |
|--------|----------------------------|-------------|
| 1..... | Bowl Detection Magnet..... | 56CR10-111M |
| 2..... | Screw..... | STA5320 |
| 3..... | Lock Nut..... | STA5837 |
| 4..... | Screw..... | STA5721 |



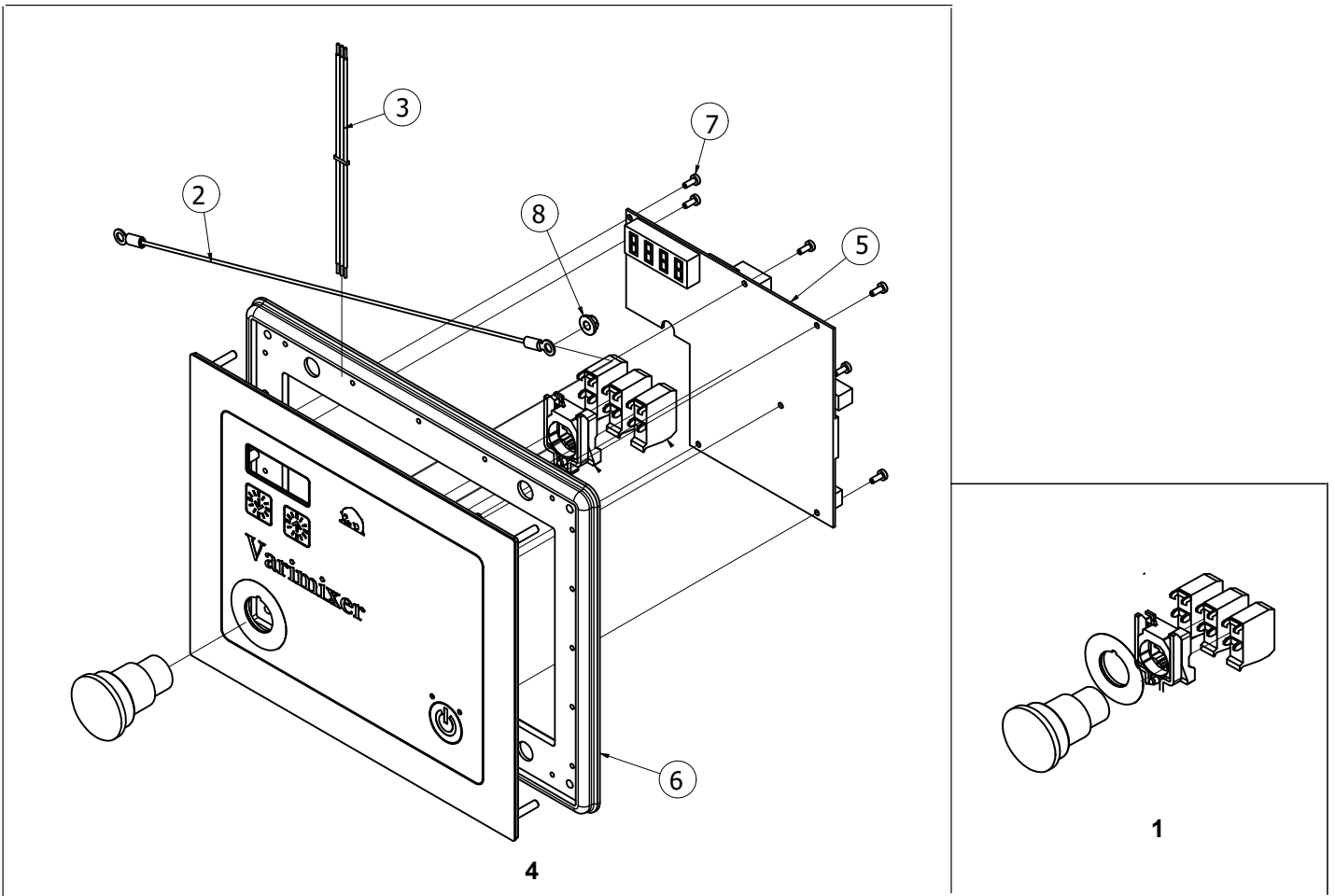
CONTROL BOX COMPONENTS

| Item # | Description | Part Number |
|---------|-----------------------------|--------------|
| 1..... | Earth Label..... | AR30-453.1 |
| 2..... | Enclosure Assembly..... | AR31-152.1M |
| 3..... | Safety Cable..... | AR31-194.18M |
| 4..... | Power Supply Cable..... | AR31-194.54M |
| 5..... | Motor Cable..... | AR31-194.63M |
| 6..... | Fuse Cable..... | AR31-194.80M |
| 7..... | Fuse Cable..... | AR31-194.81M |
| 8..... | Signal Cable..... | AR31-194.84M |
| 9..... | Signal Cable..... | AR31-194.85M |
| 10..... | Control Panel Assembly..... | AR31-530.13M |
| 11..... | Fuse Holder & Fuse..... | AR31-530.3Z |
| 12..... | Fuse (Not Shown)..... | R20E-418.2 |
| 13..... | Screw..... | STA5232 |
| 14..... | Flange Nut..... | STA5897 |
| 15..... | Contactor V30..... | |
| 15..... | Contactor V40 & V60..... | AR31-88.115 |
| 16..... | Relay V30..... | AR31-88.207 |
| 16..... | Relay V40-1 & V60-1..... | AR31-88.206 |
| 16..... | Relay V40-3 & V60-3..... | AR31-88.205 |

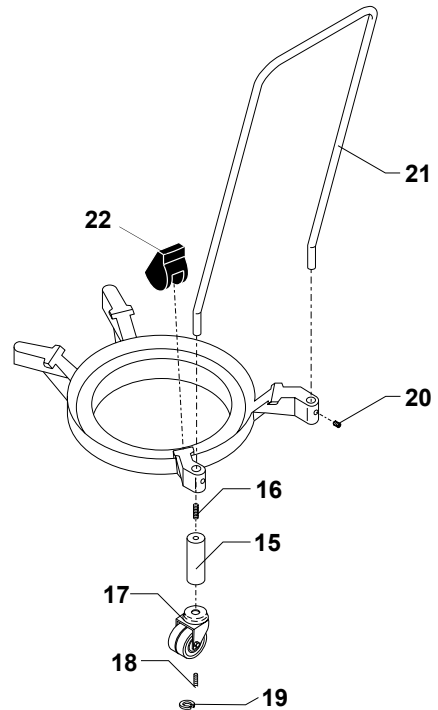
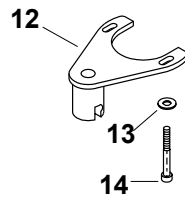
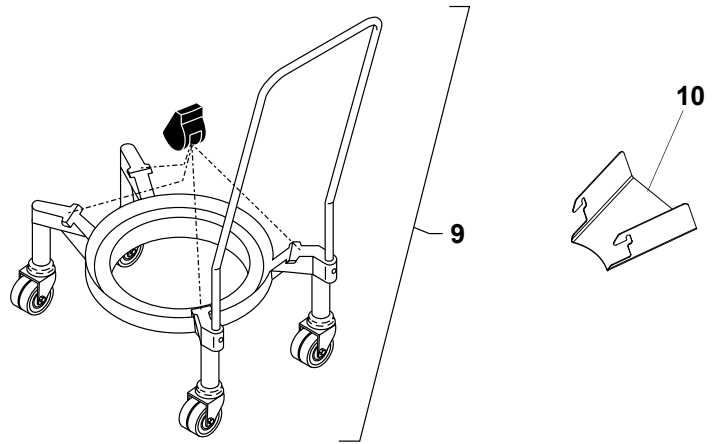
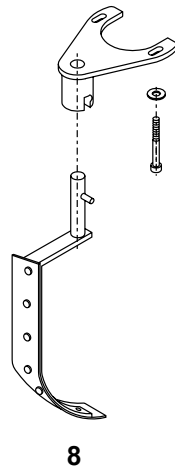
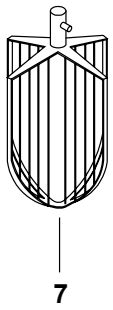
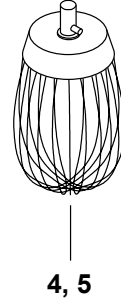
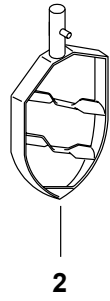
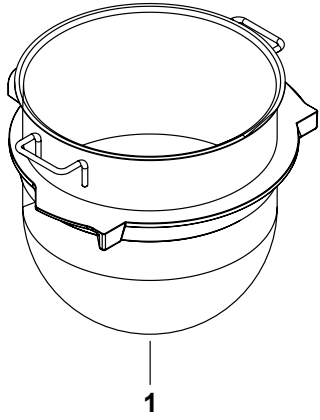


CONTROL PANEL COMPONENTS

| Item # | Description | Part Number |
|--------|-----------------------------|--------------|
| 1..... | Emergency Stop Kit..... | AR31-174.5 |
| 2..... | Ground Cable..... | AR31-194.41M |
| 3..... | Supply Cable..... | AR31-194.82M |
| 4..... | Control Panel Assembly..... | AR31-530.3Z |
| 5..... | Control Board..... | AR31-532.10 |
| 6..... | Gasket..... | AR31-562 |
| 7..... | Screw..... | STA5762 |
| 8..... | Flange Nut..... | STA5897 |



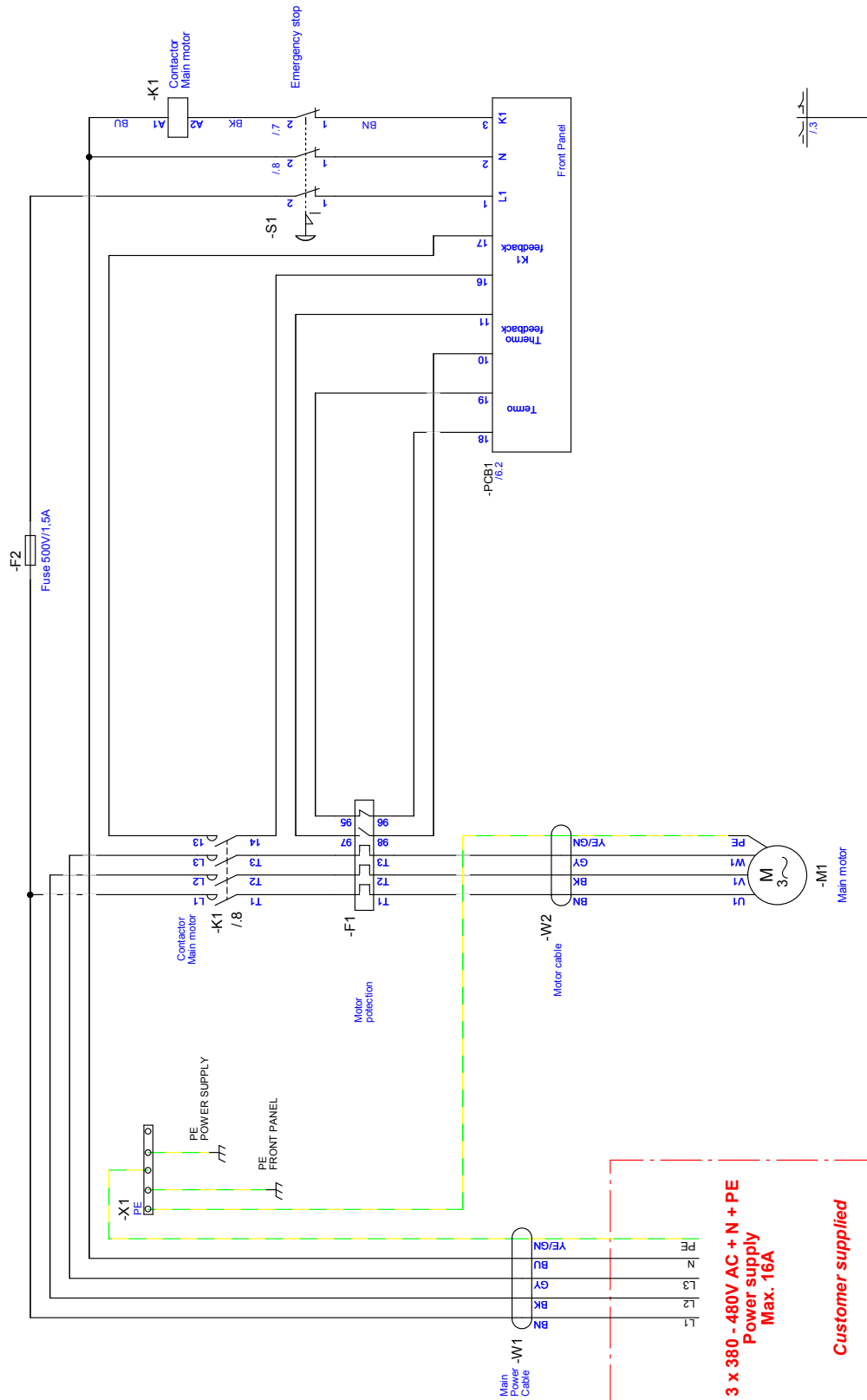
ACCESSORIES & ACCESSORY COMPONENTS



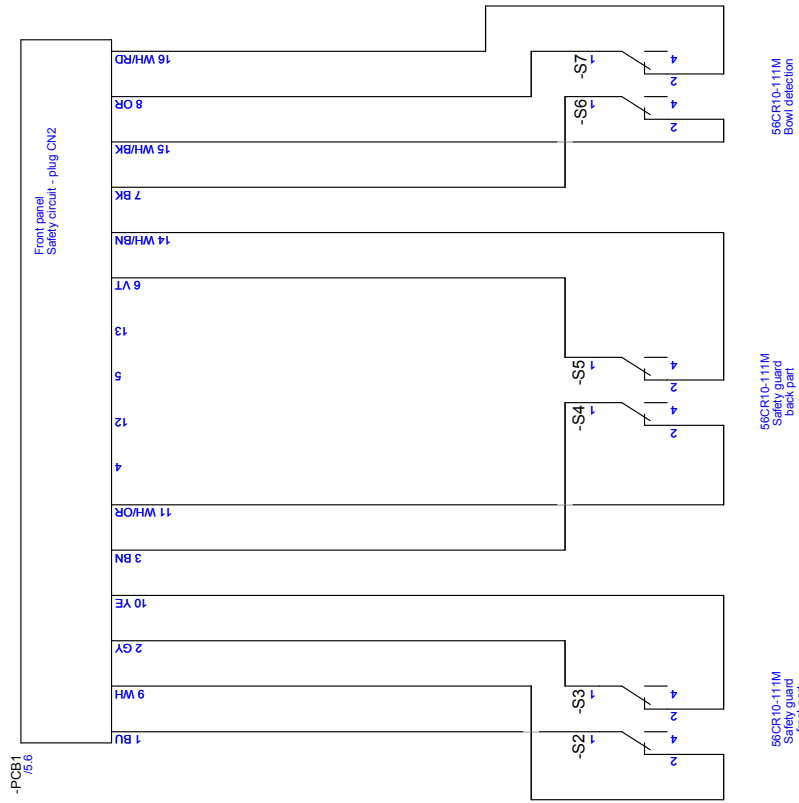
ACCESSORIES & ACCESSORY COMPONENTS

| Item # | Description | ACC/Part Number | | |
|---------|--|---------------------|---------------------|-----------------|
| | | V30 | V40 | V60 |
| 1..... | SS Bowl (W/Magnet)..... | VBOWL-30..... | VBOWL-40..... | VBOWL-60 |
| 1..... | SS Bowl (W/Magnet-Downsize)..... | VBOWL16-30..... | VBOWL20-40..... | VBOWL30-60 |
| 2..... | SS Beater..... | VBEAT-30SS..... | VBEAT-40SS..... | VBEAT-60SS |
| 2..... | SS Beater (Downsize)..... | VBEAT16-30..... | VBEAT20-40..... | VBEAT30-60 |
| 3..... | SS Hook..... | VHOOK-30..... | VHOOK-40..... | VHOOK-60 |
| 3..... | SS Hook (Downsize)..... | VHOOK16-30..... | VHOOK20-40..... | VHOOK30-60 |
| 4..... | SS Wire Whip..... | VWHIP-30..... | VWHIP-40..... | VWHIP-60 |
| 4..... | SS Wire Whip (Downsize)..... | VWHIP16-30..... | VWHIP20-40..... | VWHIP30-60 |
| 4..... | SS Heavy Duty Wire Whip..... | VHDWHIP-30..... | VHDWHIP-40..... | N/A |
| 5..... | SS Heavy Duty Wire Whip (Downsize)..... | N/A..... | N/A..... | VHDWHIP30-60 |
| 6..... | SS Heavy Duty Reinforced Wire Whip..... | N/A..... | N/A..... | VHDWHIP-60 |
| 7..... | SS Wing Whip..... | VWINGWHIP-30..... | VWINGWHIP-40..... | VWINGWHIP-60 |
| 8..... | SS Bowl Scraper Kit..... | VSCRIP-30..... | VSCRIP-40..... | VSCRIP-60 |
| 8..... | SS Bowl Scraper Kit (Downsize)..... | VSCRIP16-30..... | VSCRIP20-40..... | VSCRIP30-60 |
| 9..... | Bowl Truck..... | VBTRUCK-30..... | VBTRUCK-40..... | VBTRUCK-60 |
| 9..... | Bowl Truck (Downsize)..... | VBTRUCK16-30..... | VBTRUCK20-40..... | VBTRUCK30-60 |
| 10..... | Ingredient Chute..... | VCHUTE..... | VCHUTE..... | VCHUTE |
| 11..... | Scraper Blade..... | 42RN30-204..... | 42R40-204..... | 42R60-204 |
| 11..... | Scraper Blade (Downsize)..... | 42RN20-204..... | 42R40A-204..... | 42R60A-204 |
| 12..... | Scraper Holder..... | 42RN30-105..... | 42AR41-105..... | 42R40-105 |
| 13..... | Washer..... | STA6030..... | STA6029..... | STA6029 |
| 14..... | Screw..... | STA5363..... | AR40-41..... | STA5652 |
| 15..... | Extension..... | 22R140.1-1W..... | 22R140.8..... | 22R140.3 |
| 15..... | Extension (Downsize)..... | 22R140.1-2W..... | 22R140.1-9W..... | 22R140.1-9W |
| 16..... | Set Screw..... | STA5608..... | STA5608..... | STA5608 |
| 17..... | Dual Wheel Caster..... | 22R150-520..... | 22R150-520..... | 22R150-520 |
| 18..... | Screw..... | STA5647..... | STA5647..... | STA5647 |
| 19..... | Cap..... | STA6556..... | STA6556..... | STA6556 |
| 20..... | Set Screw..... | STA5675..... | STA5675..... | STA5675 |
| 21..... | Handle..... | 22R277..... | 22R277..... | 22R277 |
| 22..... | Rubber Block..... | W30-206..... | W30-206..... | W30-206 |
| 23..... | Accessory Tool Rack (Not Shown)..... | VTOOLRACK20-40..... | VTOOLRACK20-40..... | VTOOLRACK60-150 |
| 24..... | Downsize Adapter Kit (Not Shown) (Incl. Bowl, Beater, Hook, & Whip) | VACC16-30..... | VACC20-40..... | VACC30-60 |

WIRING DIAGRAM



PRINCIPLE ELECTRICAL DIAGRAM





Varimixer USA
2215 East River Road Moraine, Ohio 45439
P: (800) 222-1138
varimixerusa.com

