

# VLIFT

## Parts Catalog



## VLIFT-M100H



**Varimixer**

---

Varimixer A/S  
Kirkebjerg Søpark 6  
DK-2605 Brøndby  
Denmark

P: +45 4344 2288  
E: [info@varimixer.com](mailto:info@varimixer.com)  
[www.varimixer.com](http://www.varimixer.com)

SAP nr. 20060-1710  
Version 1.1 UK  
Original language "English"

REV. -

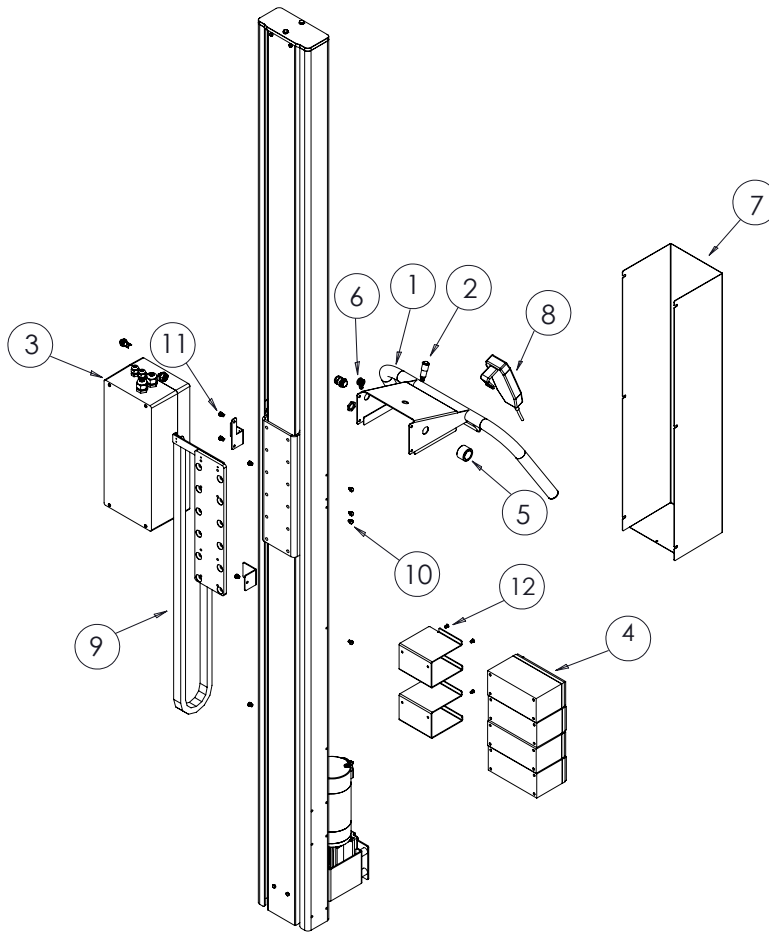
# TABLE OF CONTENTS

---

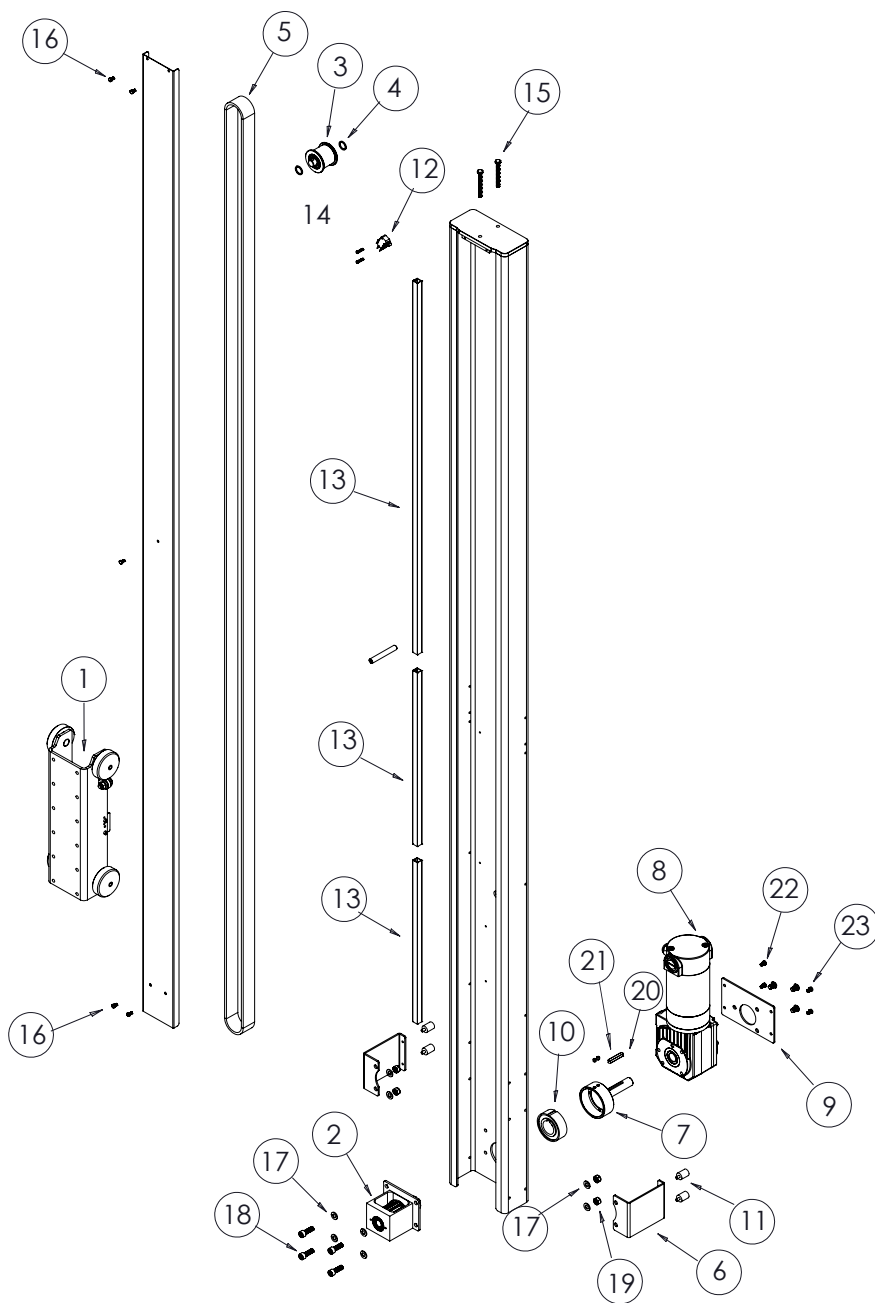
MAST COMPONENTS.....	2
MAST COMPONENTS (CONT).....	3
TURNING SYSTEM COMPONENTS.....	5
CONTROL BOX COMPONENTS.....	7
BOWL CRADLE COMPONENTS.....	8
BASE COMPONENTS.....	9
WIRING DIAGRAM.....	10

# MAST COMPONENTS

<u>Item #</u>	<u>Description</u>	<u>Part Number</u>	<u>Qty</u>
1.....	Handle.....	21-30006511.....	1
2.....	Indicator Light.....	21-84170046.....	1
3.....	Control Box Assembly.....	21-30006530.....	1
4.....	Battery (12V).....	21-84010068.....	4
5.....	Collar.....	21-30006518.....	1
6.....	Plug.....	21-84030055.....	1
7.....	Cover.....	21-30006516.....	1
8.....	Remote Control.....	21-84290030.....	1
9.....	Belt.....	21-84130046.....	1
10.....	Screw.....	21-40003632.....	8
11.....	Screw.....	21-81010399.....	2
12.....	Screw.....	21-40002636.....	4



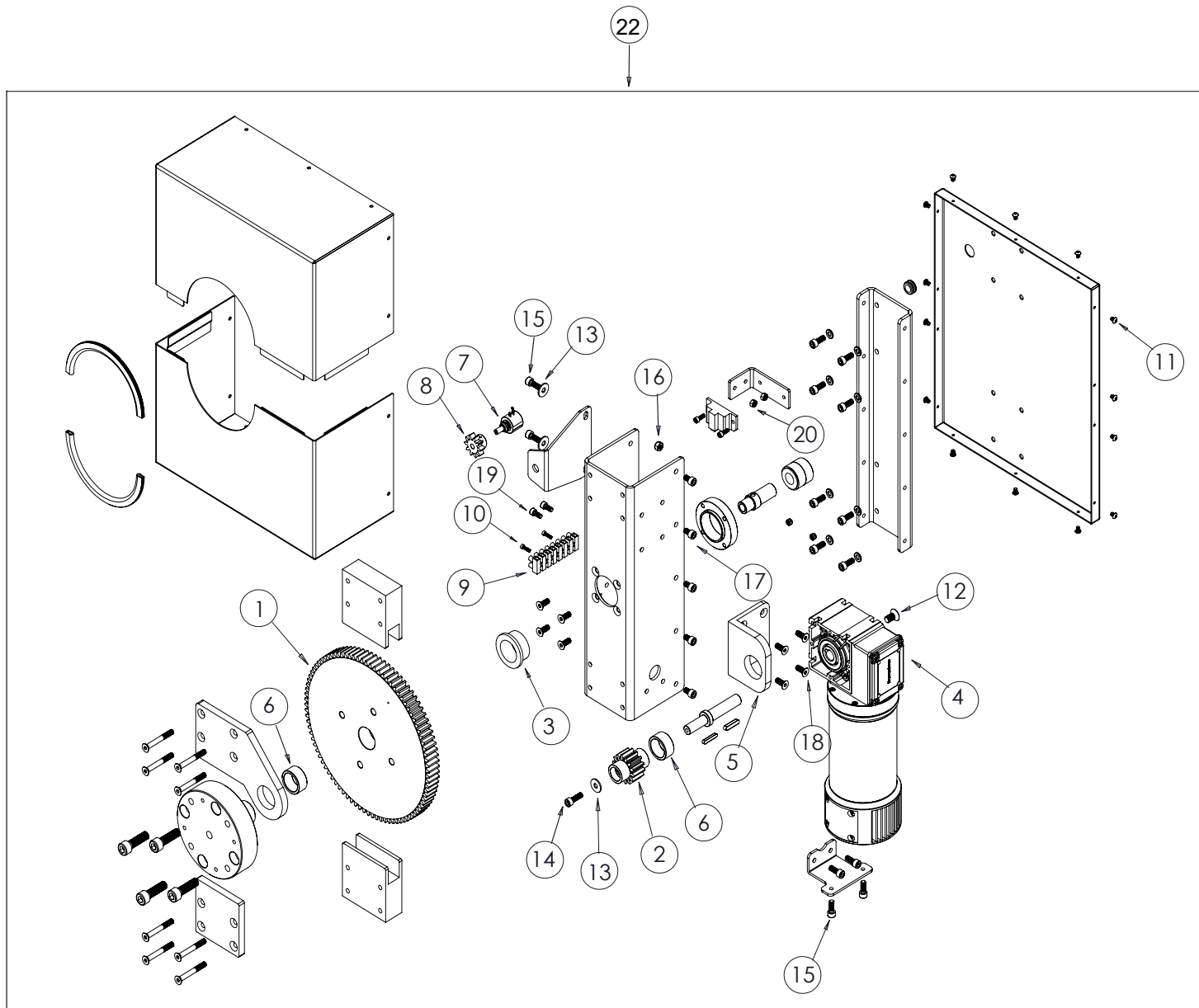
# MAST COMPONENTS (CONT)



## MAST COMPONENTS (CONT)

<u>Item #</u>	<u>Description</u>	<u>Part Number</u>	<u>Qty</u>
1.....	Guide Assembly.....	21-30008414.....	1
2.....	Bracket.....	21-40003765.....	1
3.....	Pulley.....	21-40002545.....	1
4.....	Spacer.....	21-81030086.....	2
5.....	Belt.....	21-40003674.....	1
6.....	Bracket.....	21-40002524.....	2
7.....	Bearing Housing.....	21-40002520.....	1
8.....	Motor.....	21-40002568.....	1
9.....	Motor Plate.....	21-40002526.....	1
10.....	Bearing.....	21-40002519.....	1
11.....	Plug.....	21-40002525.....	4
12.....	Microswitch (16A).....	21-84080016.....	1
13.....	Cover.....	21-84130020.....	3
14.....	Screw.....	21-81010453.....	2
15.....	Screw.....	21-81010452.....	2
16.....	Bolt.....	21-81010447.....	5
17.....	Washer.....	21-81030025.....	8
18.....	Screw.....	21-81010234.....	4
19.....	Lock Nut.....	21-81020049.....	4
20.....	Key.....	21-40002249.....	1
21.....	Set Screw.....	21-40003197.....	2
22.....	Screw.....	21-81010399.....	4
23.....	Screw.....	21-81010275.....	3

# TURNING SYSTEM COMPONENTS

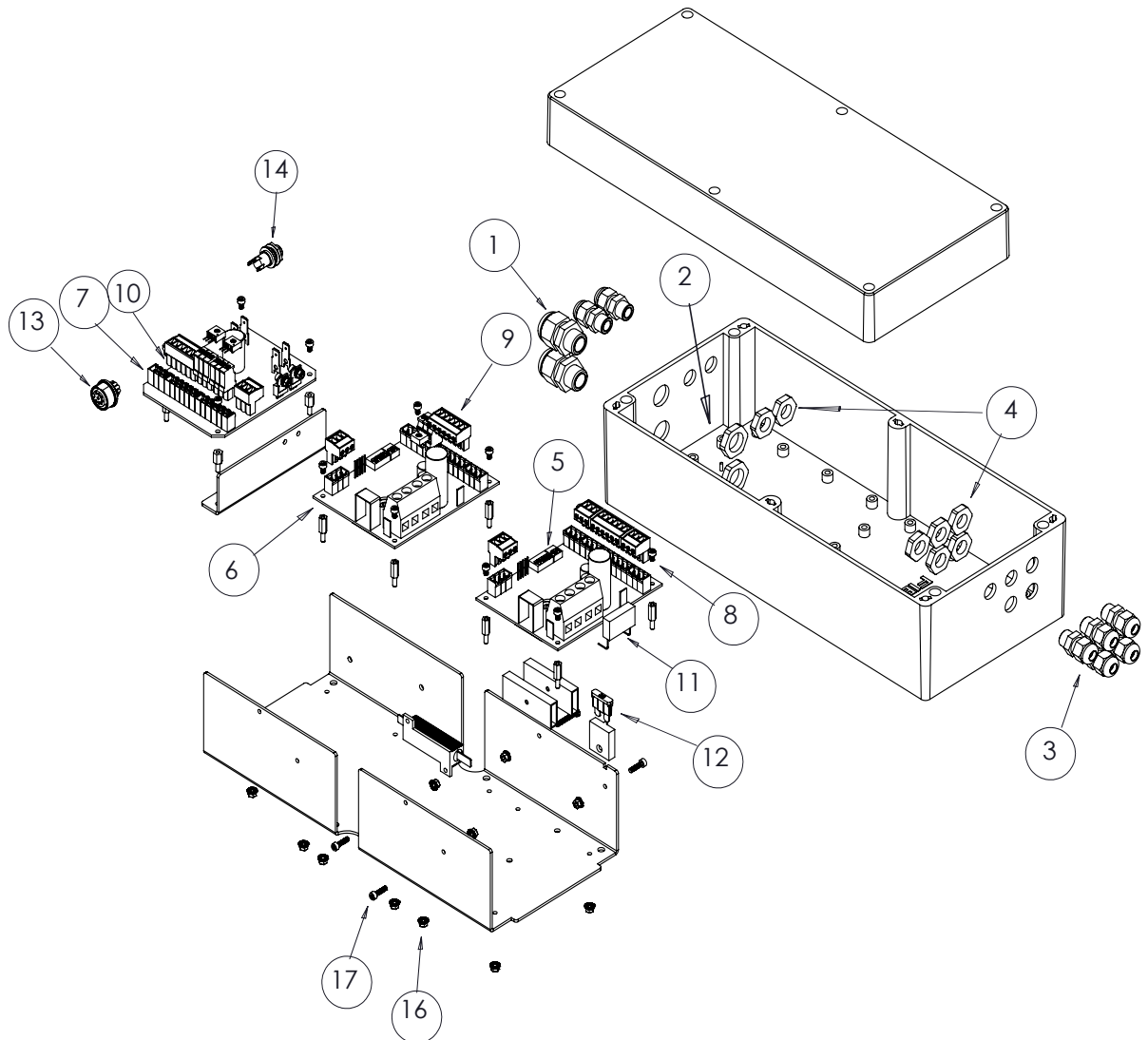


## TURNING SYSTEM COMPONENTS

<u>Item #</u>	<u>Description</u>	<u>Part Number</u>	<u>Qty</u>
1.....	Large Gear.....	21-30000763.....	1
2.....	Small Gear.....	21-40001495.....	1
3.....	Bronze Bushing.....	21-81190007.....	1
4.....	Motor.....	21-85020009.....	1
5.....	Bracket W/ Bearing.....	21-30002418.....	1
6.....	Bronze Bushing.....	21-40001496.....	2
7.....	Potentiometer.....	21-84170005.....	1
8.....	Gear.....	21-40001277.....	1
9.....	Terminal Block.....	21-RD-E028.....	1
10.....	Screw.....	21-81010365.....	2
11.....	Screw.....	21-81010369.....	14
12.....	Screw.....	21-81010203.....	1
13.....	Washer.....	21-81030041.....	3
14.....	Screw.....	21-81010224.....	1
15.....	Screw.....	21-81010330.....	14
16.....	Lock Nut.....	21-81020048.....	14
17.....	Screw.....	21-81010364.....	8
18.....	Screw.....	21-81010194.....	8
19.....	Screw.....	21-81010423.....	2
20.....	Lock Nut.....	21-81020047.....	2
21.....	Wire (Not Shown).....	21-84281774.....	1
22.....	Turning System Assembly.....	21-6210100537.....	1

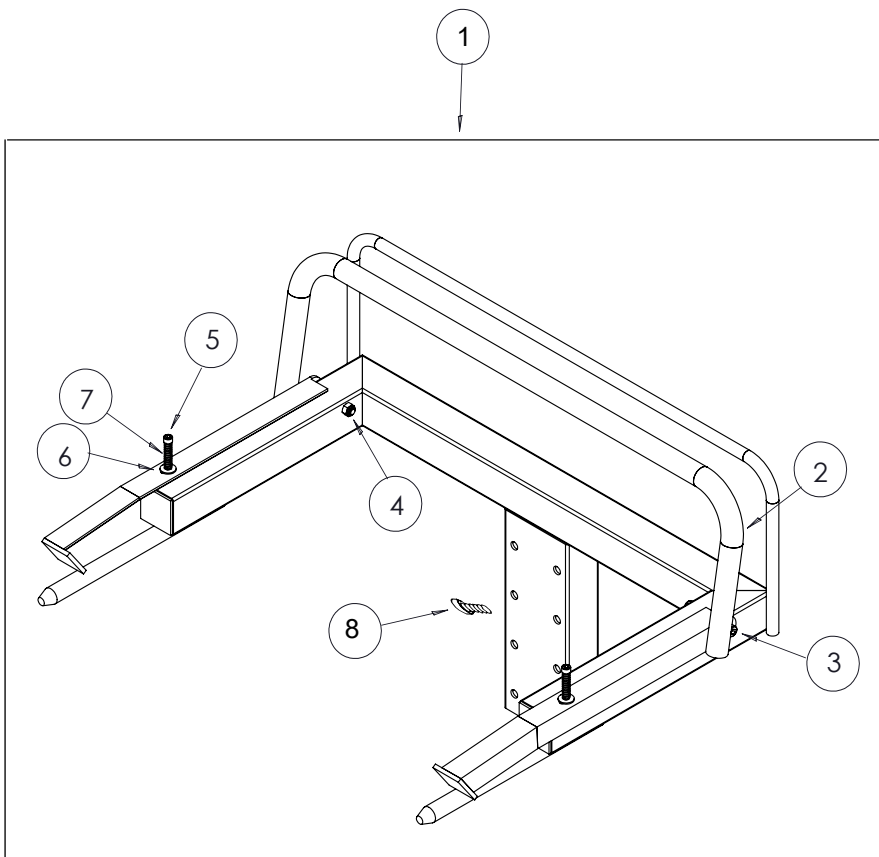
# CONTROL BOX COMPONENTS

<u>Item #</u>	<u>Description</u>	<u>Part Number</u>	<u>Qty</u>
1.....	Strain Relief.....	21-84040093.....	2
2.....	Plastic Nut.....	21-84040086.....	2
3.....	Strain Relief.....	21-84040094.....	7
4.....	Plastic Nut.....	21-84040082.....	7
5.....	Lift Control Board.....	21-84043051.....	1
6.....	Turning Control Board.....	21-84043050.....	1
7.....	Expander Control Board.....	21-84042020.....	1
8.....	Connector.....	21-2010196.....	5
9.....	Connector.....	21-2010197.....	3
10.....	Connector.....	21-2010198.....	3
11.....	Condensator.....	21-84170069.....	1
12.....	Fuse (30A).....	21-84050035.....	1
13.....	Wire Harness.....	21-84281762.....	1
14.....	Power Supply Wire Harness.....	21-84281763.....	1
15.....	Battery Wire Harness (Not Shown).....	21-84281764.....	1
16.....	Flange Nut.....	21-81020069.....	18
17.....	Screw.....	21-81010347.....	3



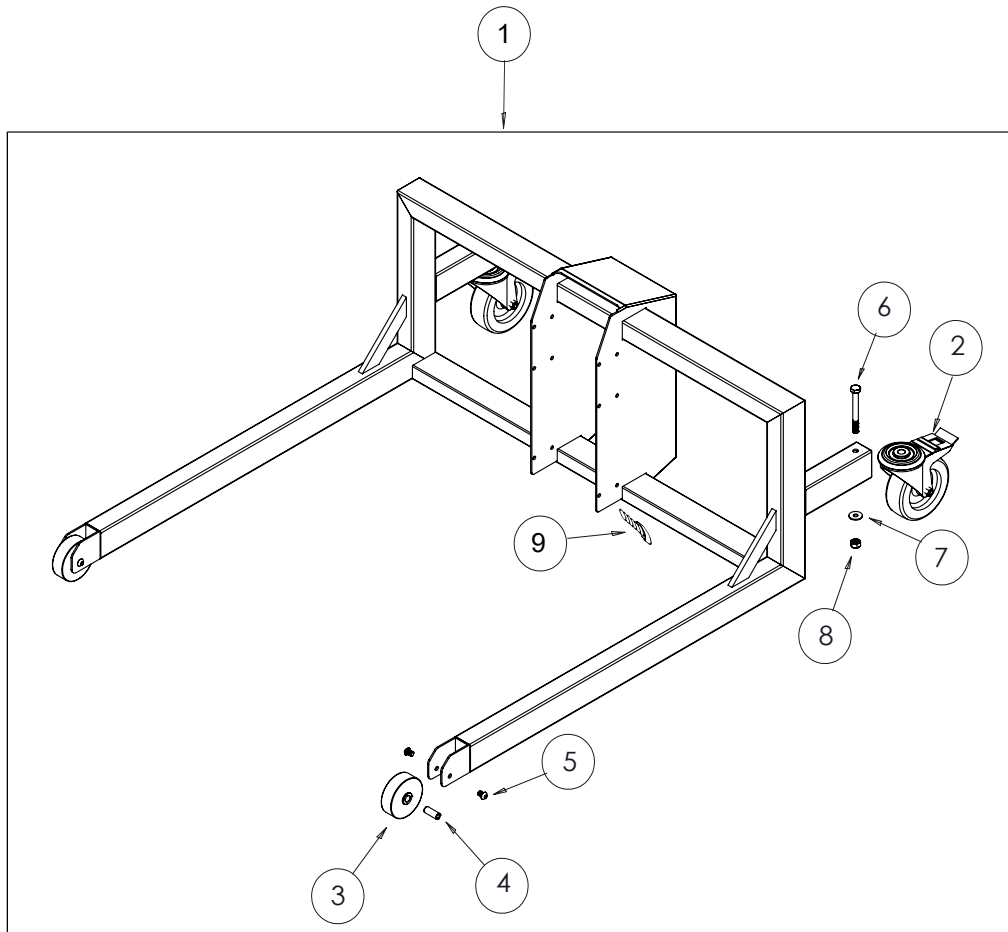
# BOWL CRADLE COMPONENTS

<u>Item #</u>	<u>Description</u>	<u>Part Number</u>	<u>Qty</u>
1.....	Bowl Cradle Assembly.....	21-30001565.....	1
2.....	Locking Shaft.....	21-30001564.....	1
3.....	Screw.....	21-81010385.....	2
4.....	Lock Nut.....	21-81020049.....	2
5.....	Screw.....	21-81010232.....	2
6.....	Washer.....	21-81030041.....	2
7.....	Spring.....	21-81120012.....	2
8.....	Screw.....	21-81010372.....	4

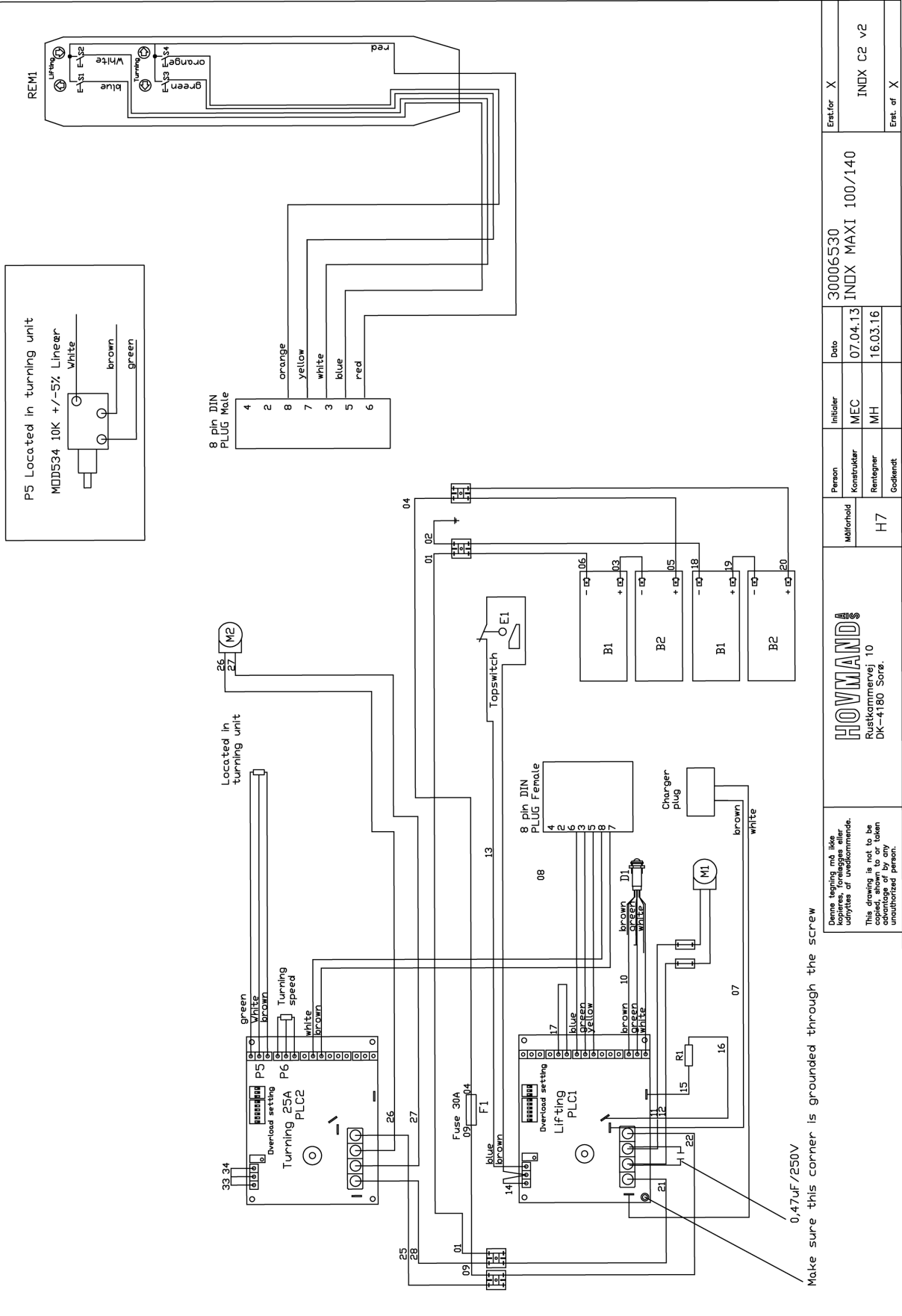


# BASE COMPONENTS

<u>Item #</u>	<u>Description</u>	<u>Part Number</u>	<u>Qty</u>
1	Base Assembly	21-40010179	1
2	Caster W/ Brake	21-81201127	2
3	Nylon Wheel	21-40003703	2
4	Shaft	21-40001140	2
5	Screw	21-81010275	4
6	Screw	21-81010070	2
7	Washer	21-81030087	2
8	Lock Nut	21-81020050	2
9	Screw	21-81010139	12



# WIRING DIAGRAM



Denne tegning må ikke kopieres, forlægges eller udrykkes af uvedkommende. This drawing is not to be copied, shown to or taken advantage of by any unauthorized person.

**HOVMAND**  
Ruskemervej 10  
DK-4180 Sorø.

Person	Initiæl	Dato	Erstat. X
Konstruktør	MEC	07.04.13	
Revisør	MH	16.03.16	
Godkendt			
Måltørhold	H7		
30006530			
INDX MAXI 100/140			
INDX C2 v2			

Make sure this corner is grounded through the screw

## 16 Annual inspection

**Date of inspection:**

**Controller:**

**Comments:**

---

---

---

---

---

---

---

---

---

---

---

---

---

---

---

---

---

---

---

---

---

---

---

---

---

---

---

