

**Wall mounted
Salsa 90 cm
Stainless steel**



EAN 5414425196210

Energy label

▪ Energy Efficiency class (EElhood)	A
▪ Annual Energy Consumption (kWh/year) (AEChood)	49,9
▪ Fluid Dynamic Efficiency class (FDEhood)	A
▪ Lighting Efficiency class (LEhood)	A
▪ Grease Filtering Efficiency class (GFEhood)	E

Functions & features

▪ Motor	Integrated
▪ Sound absorber	Without
▪ Recirculation	Optional
▪ Auto stop	-
▪ Delayed switch off (minutes)	5,10,15,20
▪ Grease filter	6200020
▪ Number of grease filters	2
▪ Grease filter cleaning indication	▪
▪ Recirculation filter cleaning indication	▪
▪ Control method	Push buttons
▪ Number of speeds	4
▪ Automatic Power revert (minutes)	5

Dimensions

▪ Product dimensions exhaust (WxDxHmin-Hmax) (mm)	898 x 520 x 710 - 1140
▪ Product dimensions recirculation (WxDxHmin-Hmax) (mm)	898 x 520 x 765 - 1205
▪ Max height optional chimney exhaust (mm)	1460
▪ Max height optional chimney recirculation (mm)	1525
▪ Advised mounting height induction hobs (Hmin-Hmax) (mm)	650 - 750
▪ Advised mounting height gas hobs (Hmin-Hmax) (mm)	650 - 750
▪ Advised mounting height ceramic hobs (Hmin-Hmax) (mm)	600 - 750
▪ Diameter outlet (mm)	150
▪ Position exhaust	Top

Lighting

▪ Functional light dimmable	-
▪ Soft-ON/OFF	-
▪ Number of functional lights	3
▪ Total energy consumption functional light (W)	6
▪ Color functional light (K)	3000

Airflow and noise level

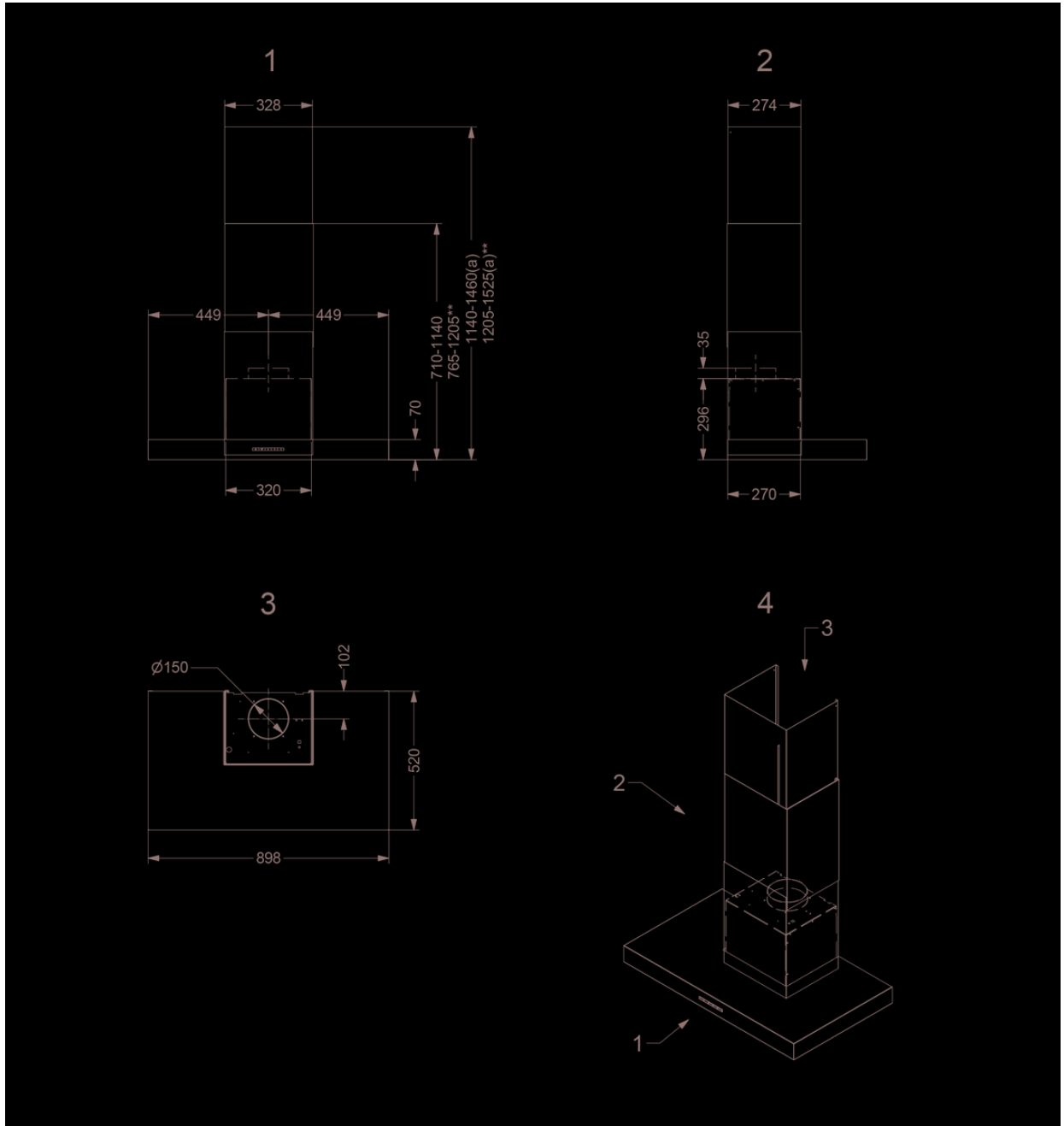
▪ Free airflow (m ³ /h)	700
▪ Airflow (m ³ /h) measured according to EN 61591	
▪ Sound regulation according to EN 60704-2-13	

Airflow and noise level

▪ Airflow duct out speed 1 (m ³ /h) / Max pressure duct out speed 1 (Pa)	248 / 413
▪ Airflow duct out speed 2 (m ³ /h) / Max pressure duct out speed 2 (Pa)	329 / 466
▪ Airflow duct out speed 3 (m ³ /h) / Max pressure duct out speed 3 (Pa)	423 / 505
▪ Airflow duct out max powerspeed (m ³ /h) (Qboost) / Max pressure duct out max powerspeed (Pa)	640 / 544
▪ Sound pressure duct out speed 1 (dB(A)) / Sound power duct out speed 1 (dB(A))	33 / 45
▪ Sound pressure duct out speed 2 (dB(A)) / Sound power duct out speed 2 (dB(A))	38 / 51
▪ Sound pressure duct out speed 3 (dB(A)) / Sound power duct out speed 3 (dB(A))	44 / 57
▪ Sound pressure duct out at max powerspeed (dB(A)) / Sound power duct out at max powerspeed (dB(A)) (LWAbboost)	54 / 66

Technical specifications

▪ Maximum power (W)	241
▪ Voltage appliance (V)	230
▪ Frequency (Hz)	50-60
▪ Power consumption in off-mode (Po) (W)	-
▪ Power consumption in stand-by-mode (Ps) (W)	0.24
▪ Net weight (kg)	24
▪ Length power supply cable (m)	1,3



Installation accessories

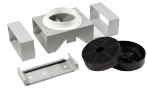
Back panel & chimney extensions

- 6200100

Chimney extension Novy Salsa

Accessories

Recirculation kit



6200400

Recirculation set for Novy Salsa wall mounted

Efficiency Curve

