

**Wall mounted
Salsa 90 cm
Black**

EAN 5414425221523



Energy label

▪ Energy Efficiency class (EElhood)	A
▪ Annual Energy Consumption (kWh/year) (AEChood)	49,9
▪ Fluid Dynamic Efficiency class (FDEhood)	A
▪ Lighting Efficiency class (LEhood)	A
▪ Grease Filtering Efficiency class (GFEhood)	E

Functions & features

▪ Motor	Integrated
▪ Sound absorber	Without
▪ Recirculation	Optional
▪ Auto stop	-
▪ Delayed switch off (minutes)	5,10,15,20
▪ Grease filter	6200020
▪ Number of grease filters	2
▪ Grease filter cleaning indication	▪
▪ Recirculation filter cleaning indication	▪
▪ Control method	Push buttons
▪ Number of speeds	4
▪ Automatic Power revert (minutes)	5

Dimensions

▪ Product dimensions exhaust (WxDxHmin-Hmax) (mm)	898 x 520 x 710 - 1140
▪ Product dimensions recirculation (WxDxHmin-Hmax) (mm)	898 x 520 x 765 - 1205
▪ Max height optional chimney exhaust (mm)	1460
▪ Max height optional chimney recirculation (mm)	1525
▪ Advised mounting height induction hobs (Hmin-Hmax) (mm)	650 - 750
▪ Advised mounting height gas hobs (Hmin-Hmax) (mm)	650 - 750
▪ Advised mounting height ceramic hobs (Hmin-Hmax) (mm)	600 - 750
▪ Diameter outlet (mm)	150
▪ Position exhaust	Top

Lighting

▪ Functional lighting type	LED
▪ Functional light dimmable	-
▪ Soft-ON/OFF	-
▪ Number of functional lights	3
▪ Total energy consumption functional light (W)	6
▪ Color functional light (K)	3000

Airflow and noise level

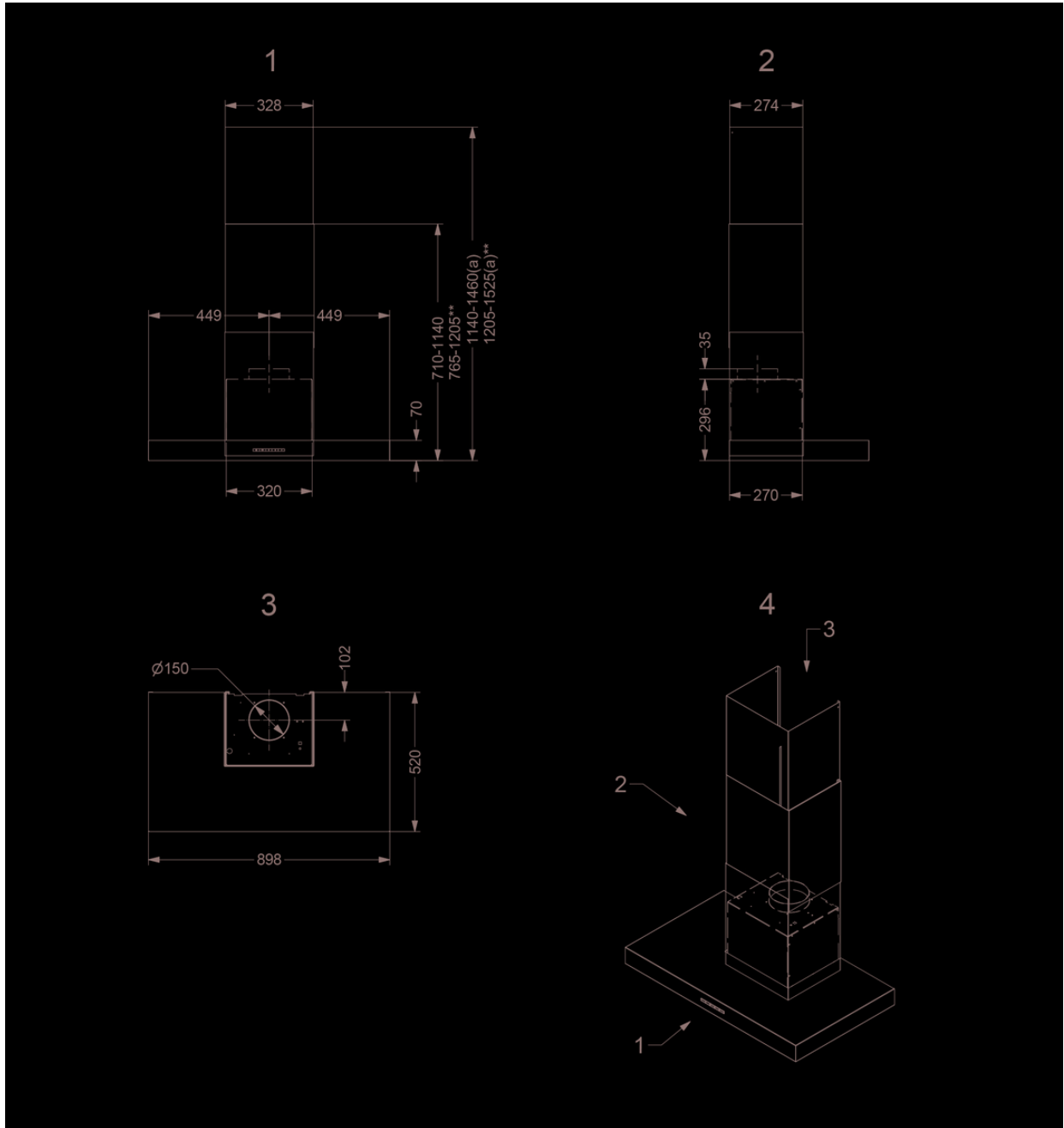
▪ Free airflow (m ³ /h)	700
▪ Airflow (m ³ /h) measured according to EN 61591	

Airflow and noise level

- Sound regulation according to EN 60704-2-13
- Airflow duct out speed 1 (m³/h) / Max pressure duct out speed 1 (Pa) 248 / 413
- Airflow duct out speed 2 (m³/h) / Max pressure duct out speed 2 (Pa) 329 / 466
- Airflow duct out speed 3 (m³/h) / Max pressure duct out speed 3 (Pa) 423 / 505
- Airflow duct out max powerspeed (m³/h) (Qboost) / Max pressure duct out640 / 544
max powerspeed (Pa)
- Sound pressure duct out speed 1 (dB(A)) / Sound power duct out speed 33 / 45
1 (dB(A))
- Sound pressure duct out speed 2 (dB(A)) / Sound power duct out speed 38 / 51
2 (dB(A))
- Sound pressure duct out speed 3 (dB(A)) / Sound power duct out speed 44 / 57
3 (dB(A))
- Sound pressure duct out at max powerspeed (dB(A)) / Sound power duct 54 / 66
out at max powerspeed (dB(A)) (LWAbost)

Technical specifications

- | | |
|---|-------|
| ▪ Maximum power (W) | 241 |
| ▪ Voltage appliance (V) | 230 |
| ▪ Frequency (Hz) | 50-60 |
| ▪ Power consumption in off-mode (Po) (W) | - |
| ▪ Power consumption in stand-by-mode (Ps) (W) | 0.24 |
| ▪ Net weight (kg) | 24 |
| ▪ Length power supply cable (m) | 1,3 |



Installation accessories

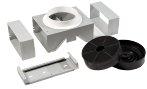
Back panel & chimney extensions

▪ 6512100

Chimney extension 86,5cm

Accessories

Recirculation kit



6200400

Recirculation set for Novy Salsa wall mounted

Efficiency Curve

